

## 5 調査結果グラフ

### 5.1 地点別水質経月変化

#### 5.1.1 pH経月変化 (西浦)

(令和元~令和3年度)

実線：R4年度、点線：過去3年間平均

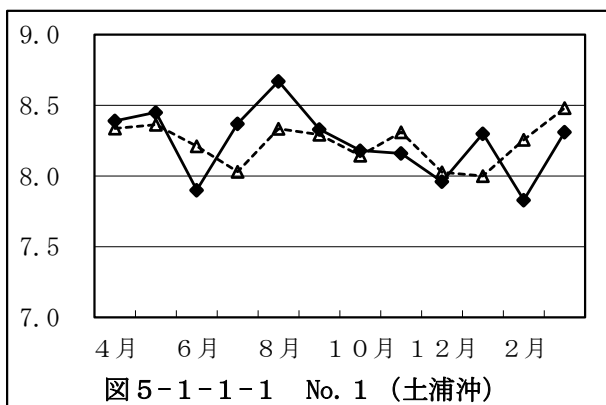


図5-1-1-1 No. 1 (土浦沖)

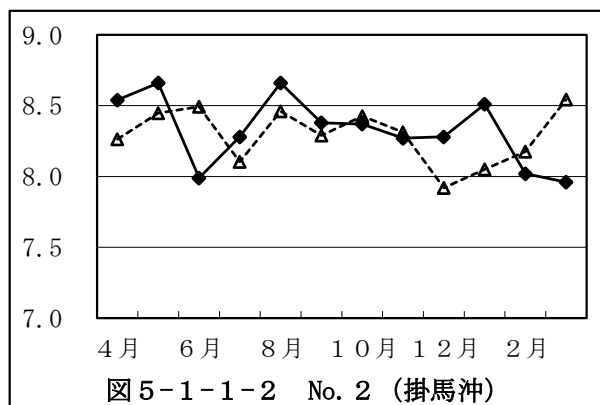


図5-1-1-2 No. 2 (掛馬沖)

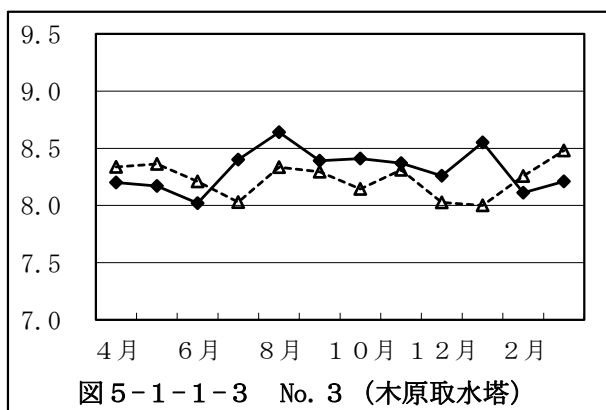


図5-1-1-3 No. 3 (木原取水塔)

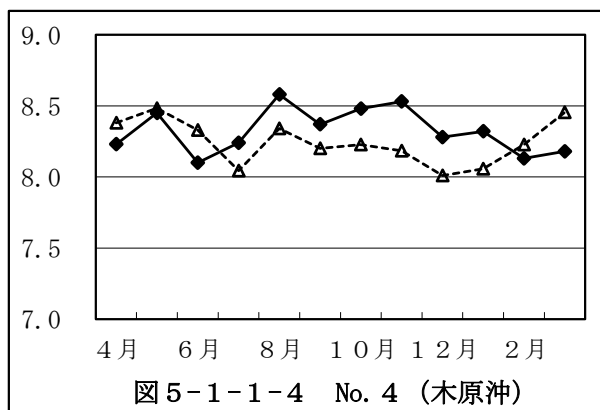


図5-1-1-4 No. 4 (木原沖)

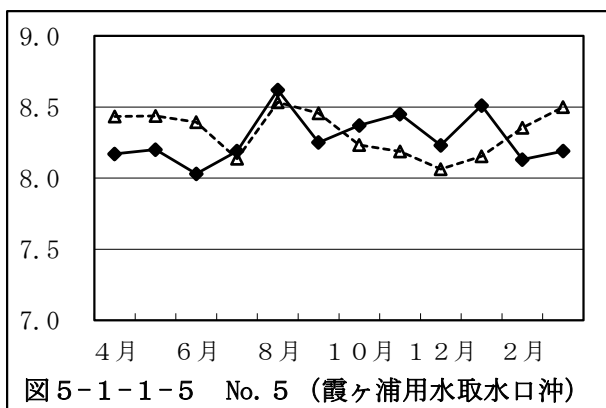


図5-1-1-5 No. 5 (霞ヶ浦用水取水口沖)

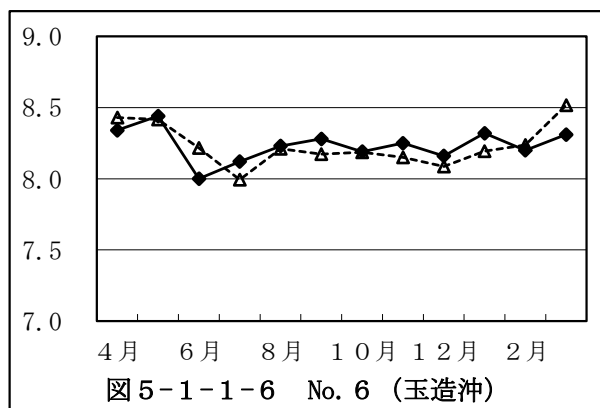


図5-1-1-6 No. 6 (玉造沖)

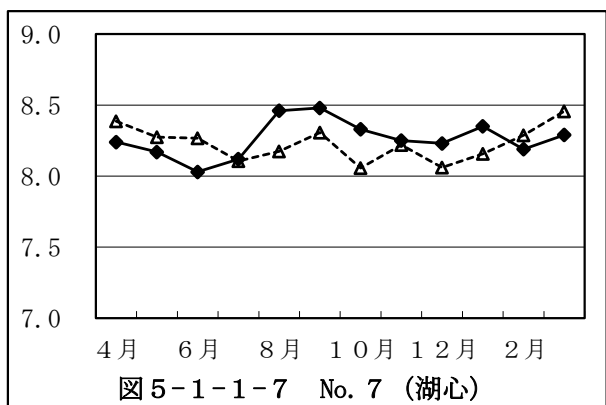


図5-1-1-7 No. 7 (湖心)

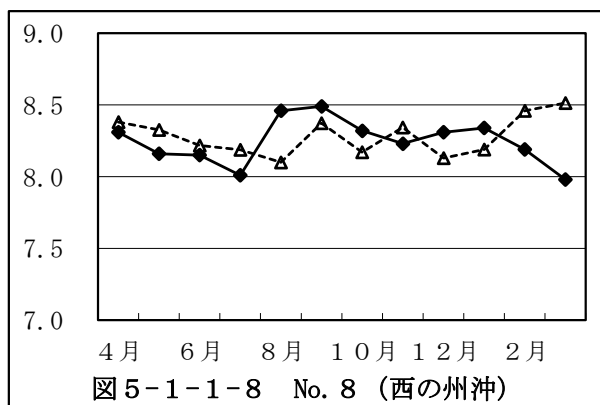
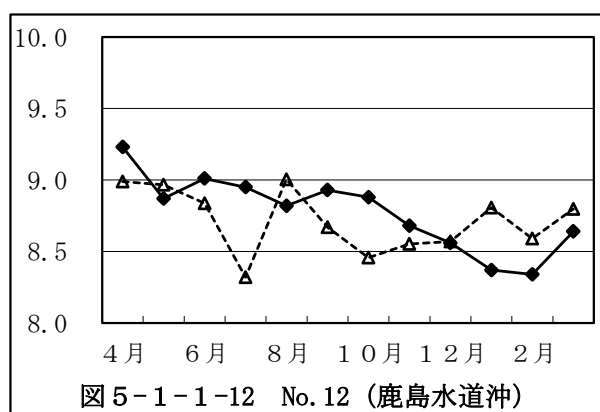
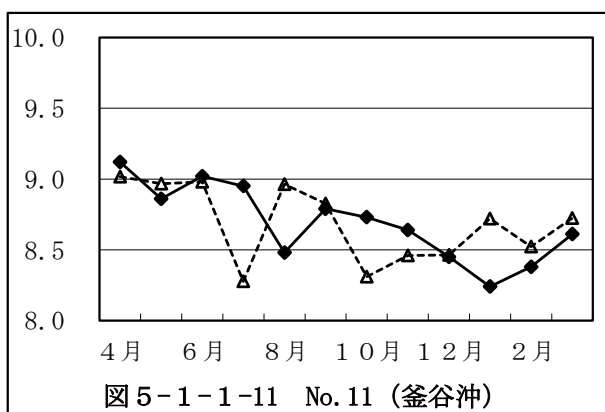
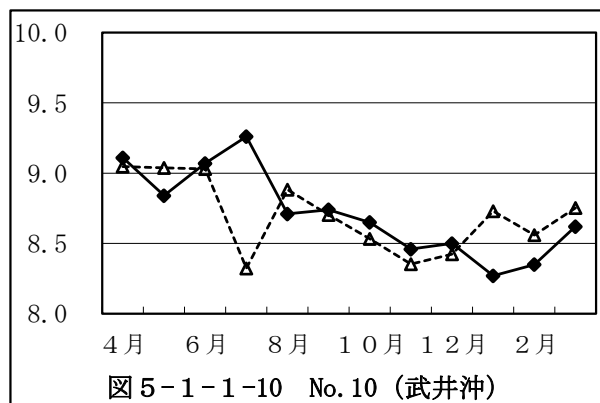
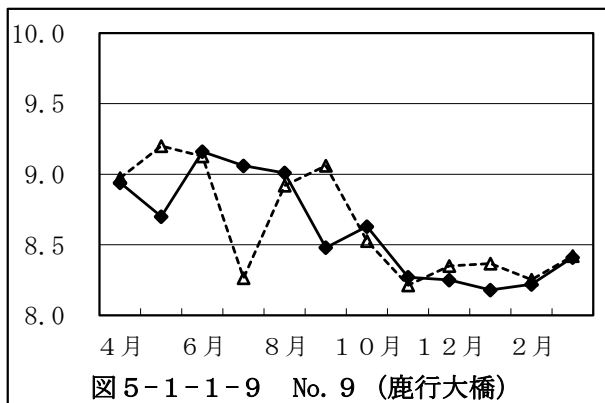


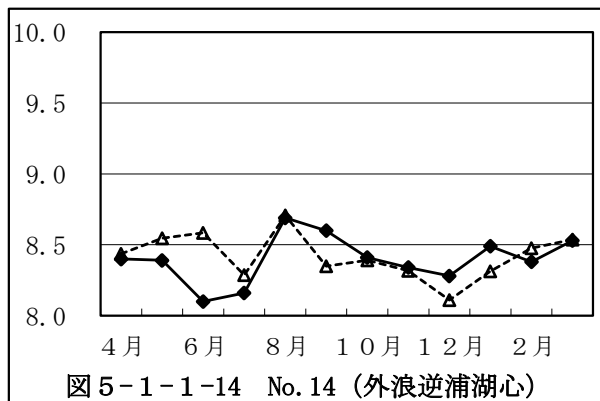
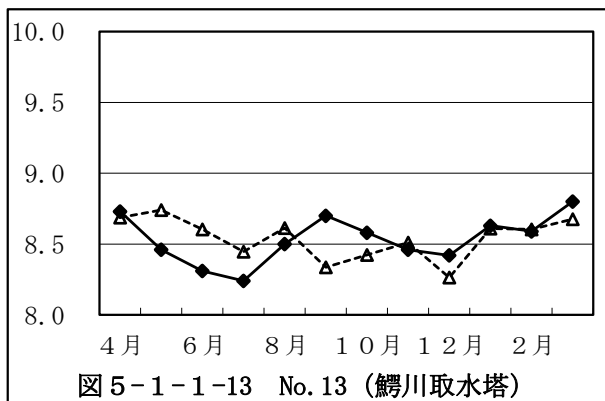
図5-1-1-8 No. 8 (西の州沖)

pH経月変化（北浦）

実線：R4年度、点線：過去3年間平均

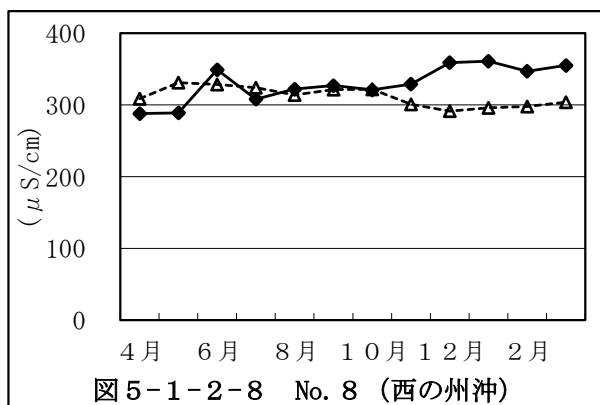
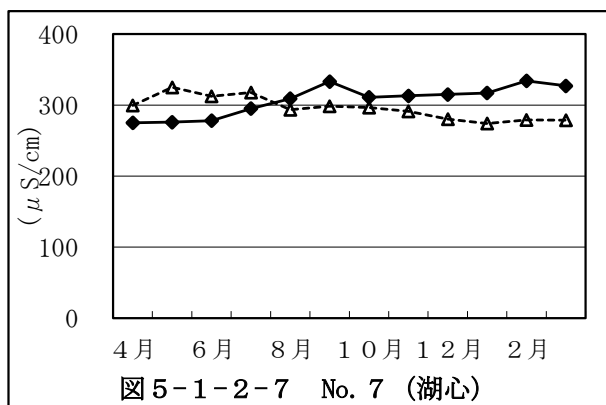
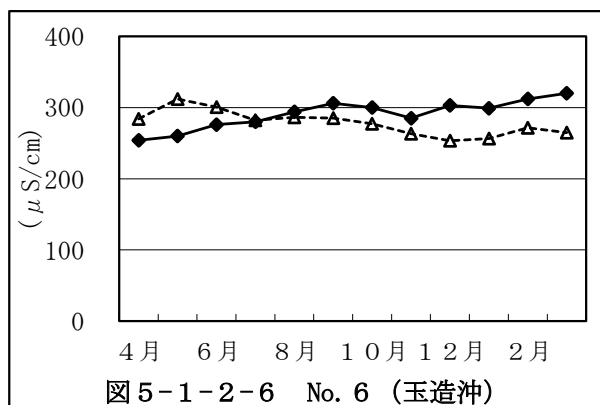
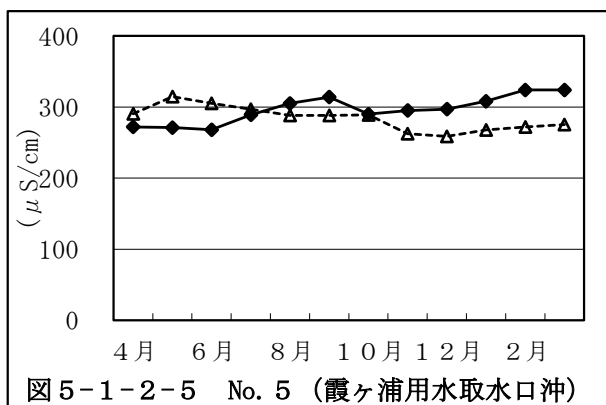
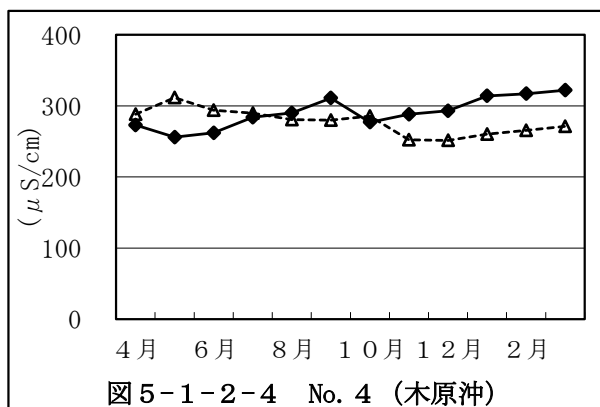
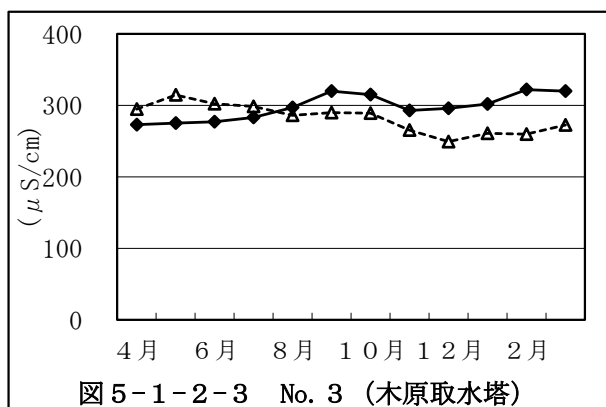
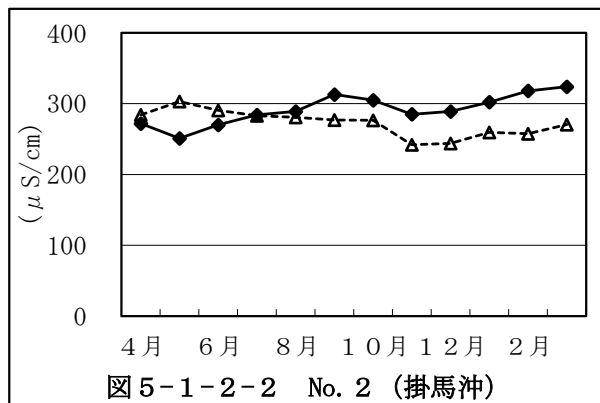
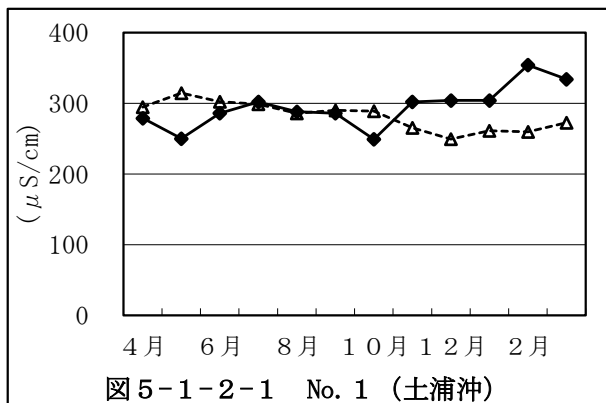


pH経月変化（鰯川、外浪逆浦）

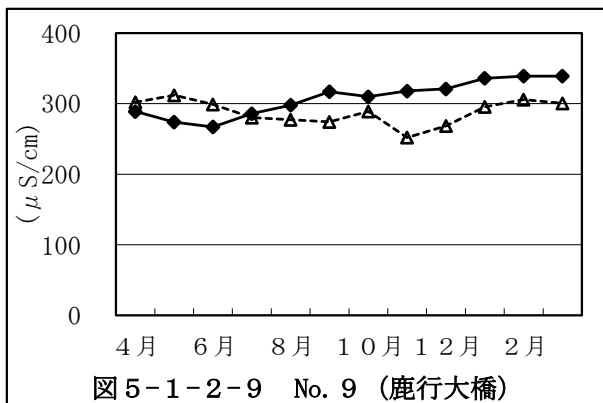


5.1.2 電気伝導率経月変化 (西浦)

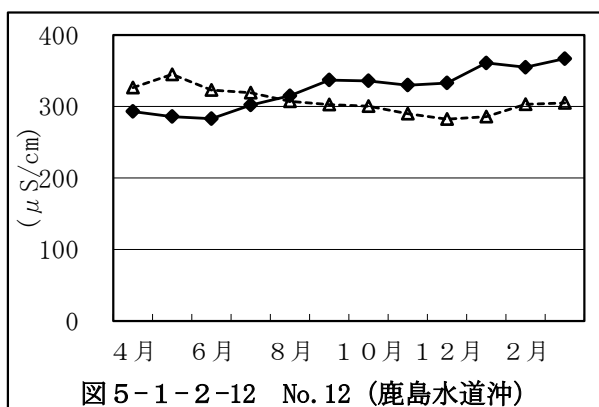
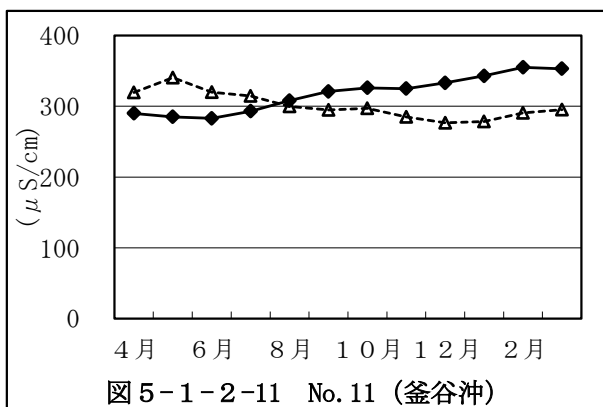
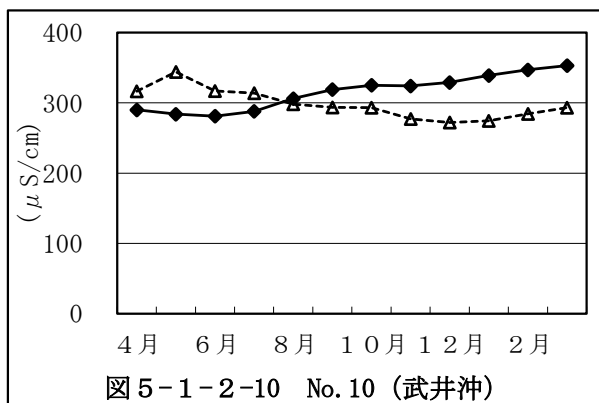
実線：R4年度、点線：過去3年間平均



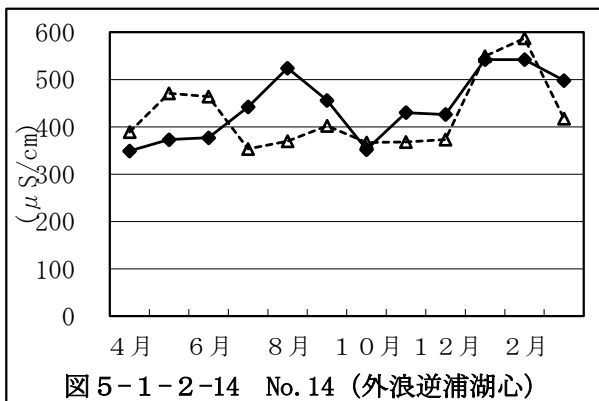
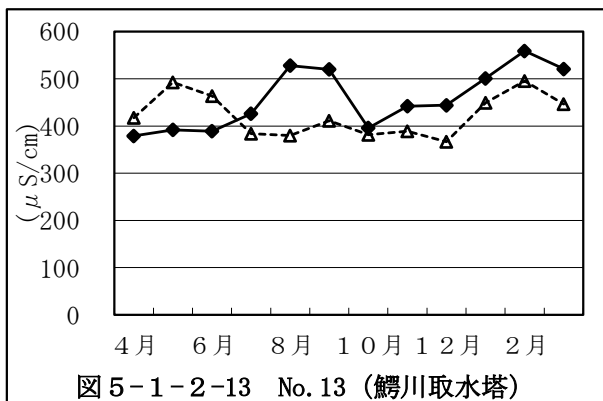
電気伝導率経月変化（北浦）



実線：R4年度、点線：過去3年間平均

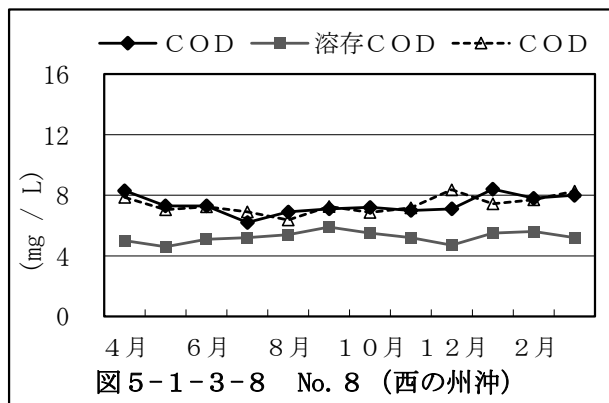
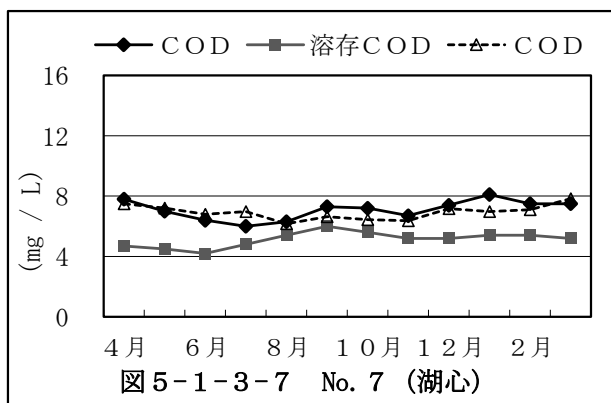
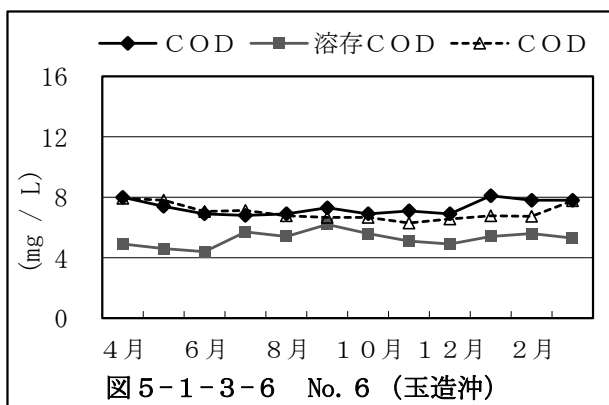
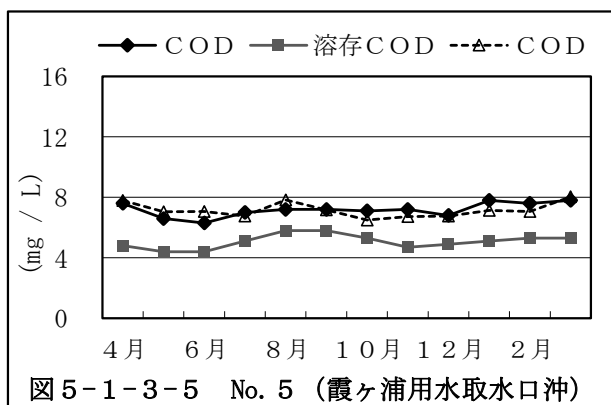
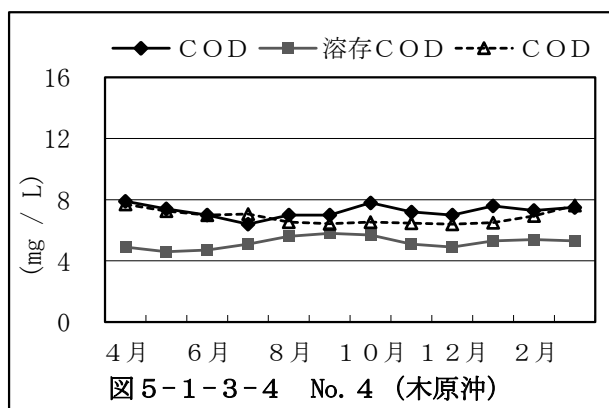
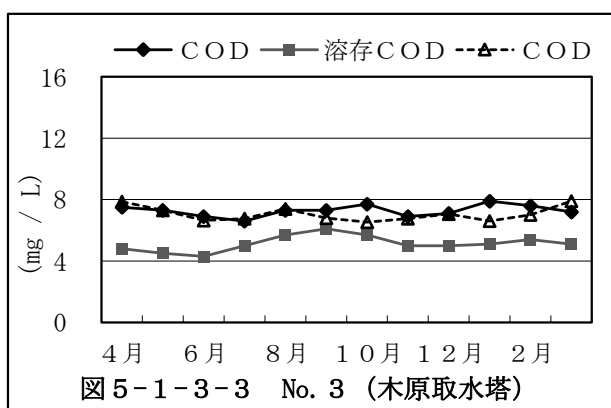
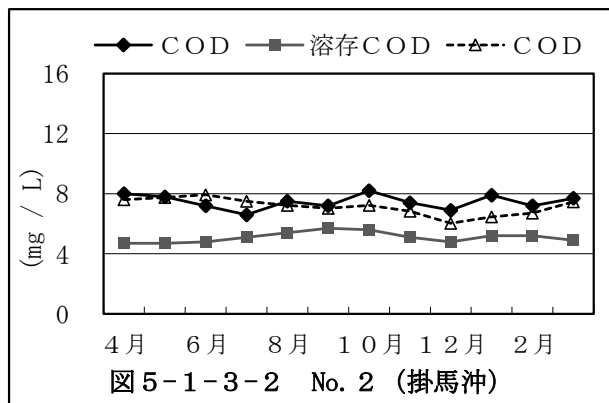
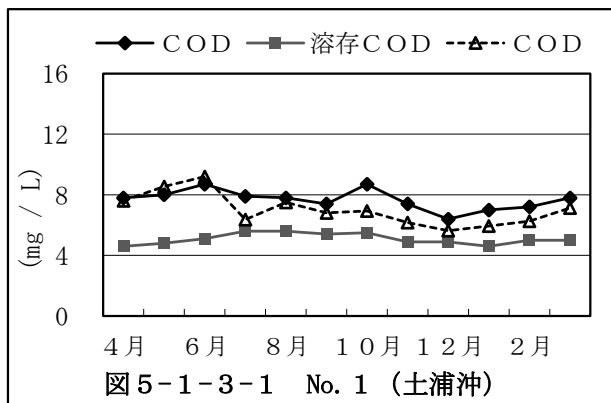


電気伝導率経月変化（鰐川、外浪逆浦）



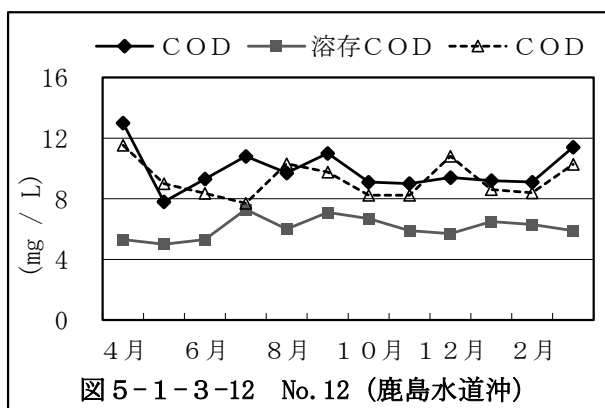
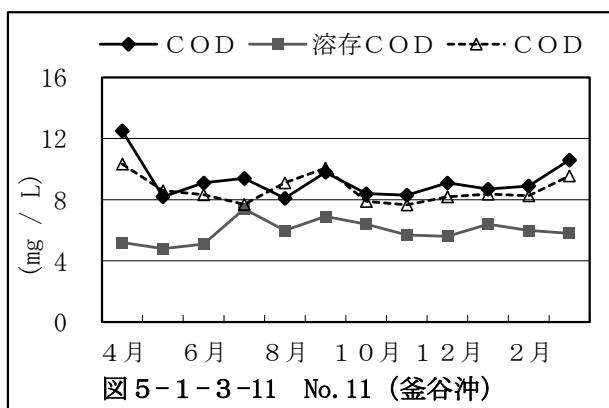
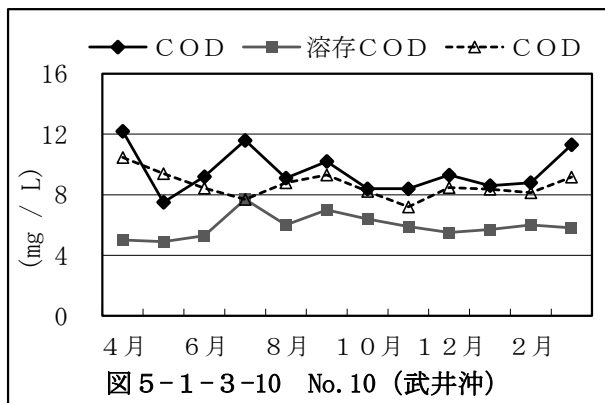
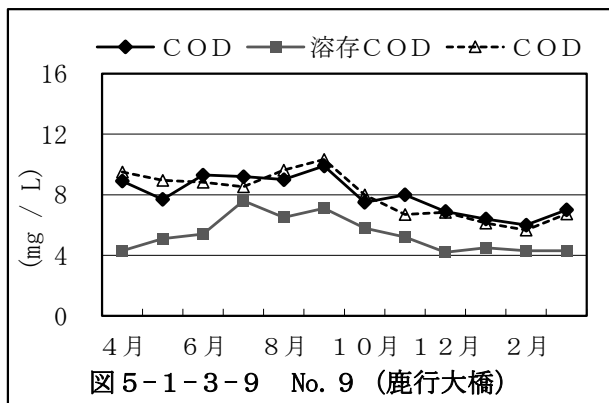
5.1.3 COD経月変化 (西浦)

実線：R4年度、点線：過去3年間平均

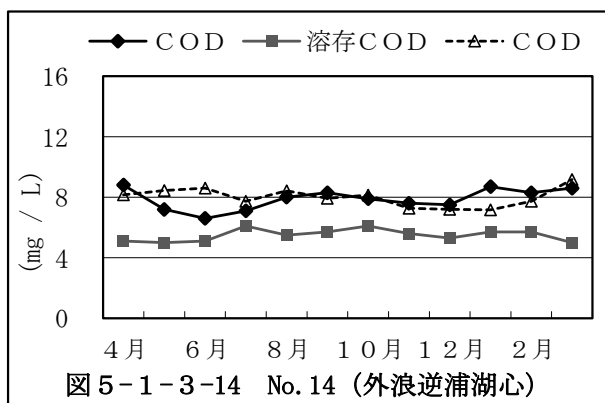
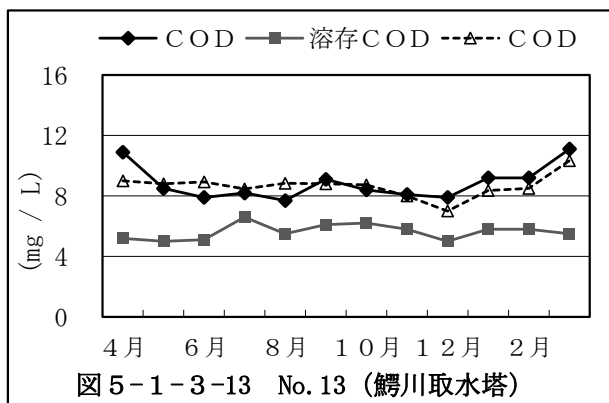


COD経月変化 (北浦)

実線：R4年度、点線：過去3年間平均

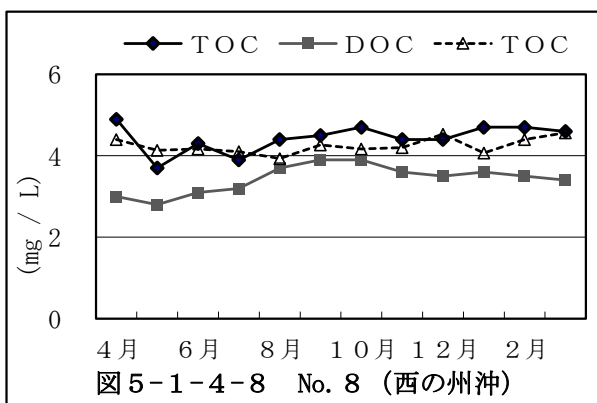
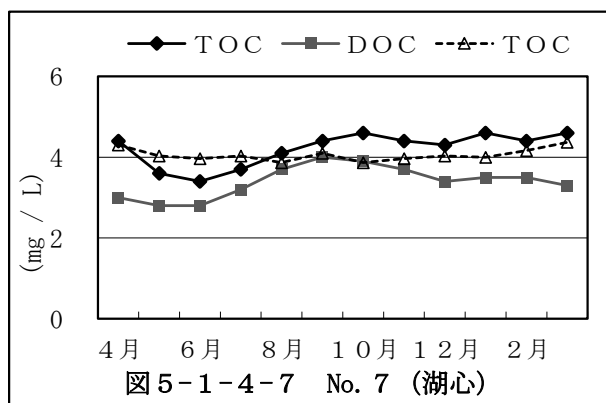
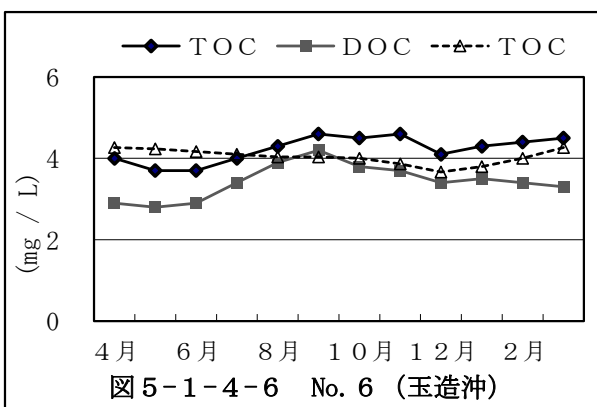
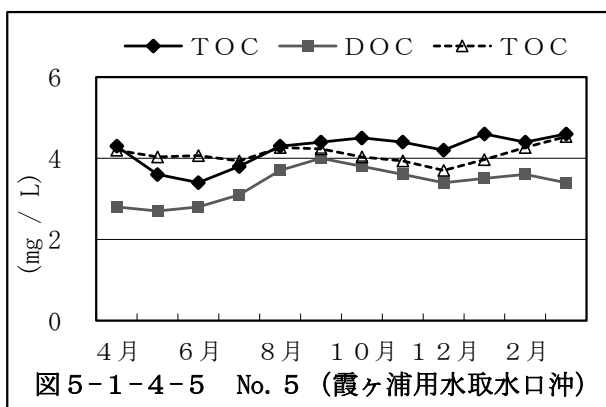
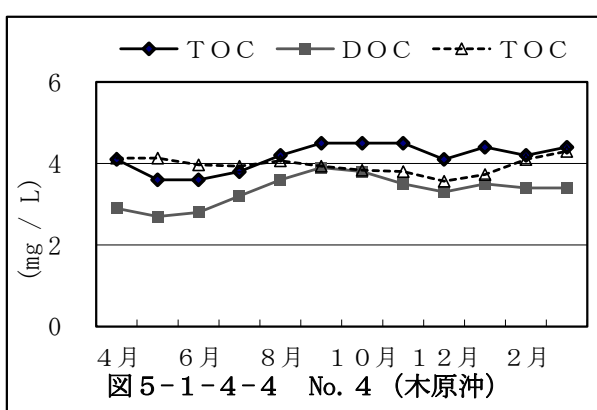
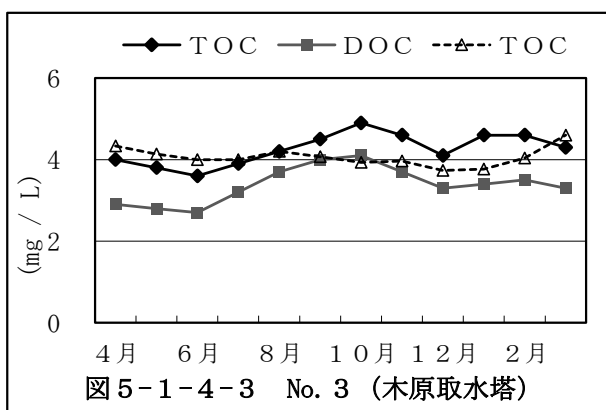
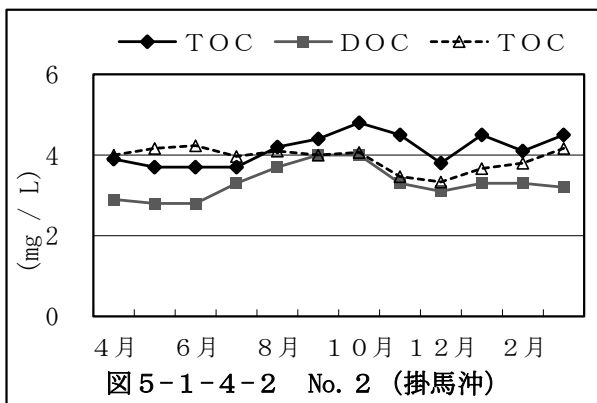
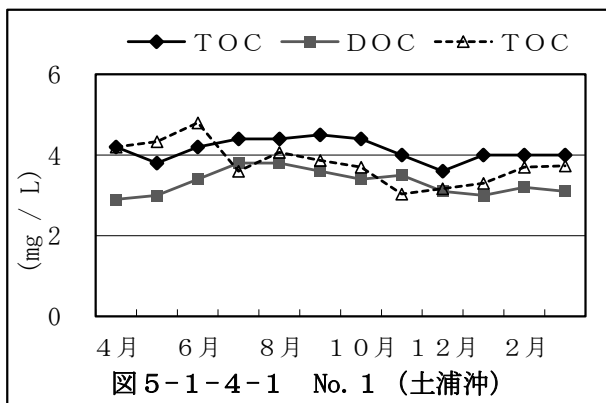


COD経月変化 (鰐川、外浪逆浦)



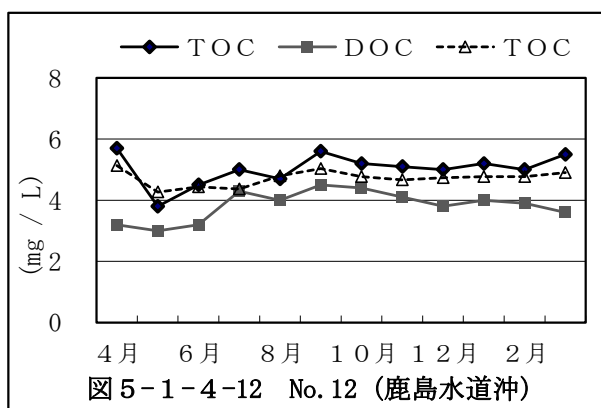
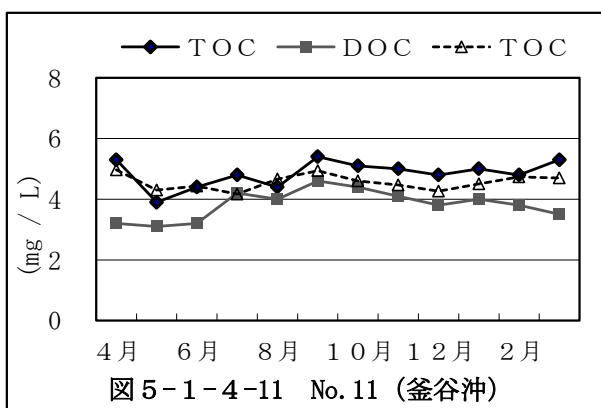
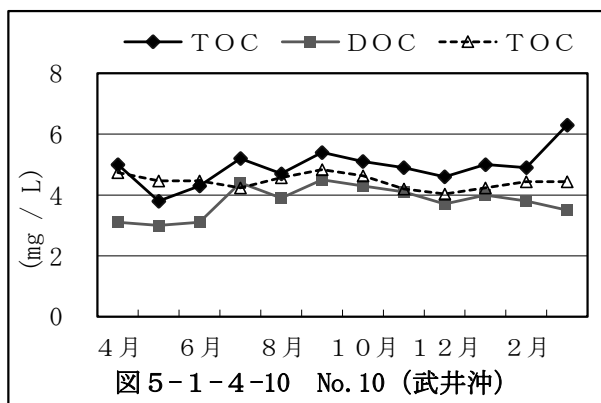
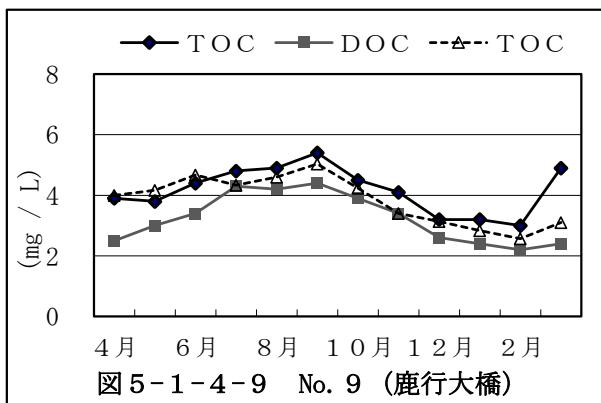
5.1.4 TOC経月変化 (西浦)

実線：R4年度、点線：過去3年間平均

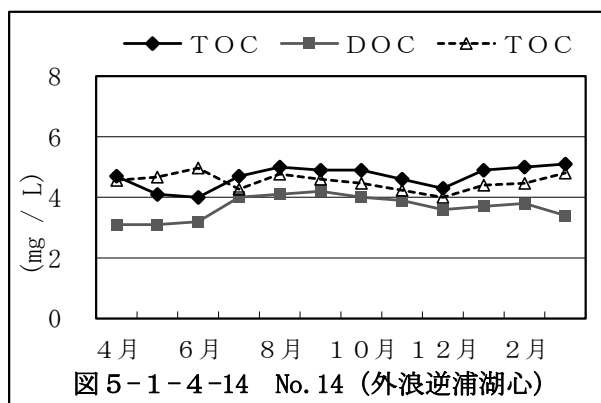
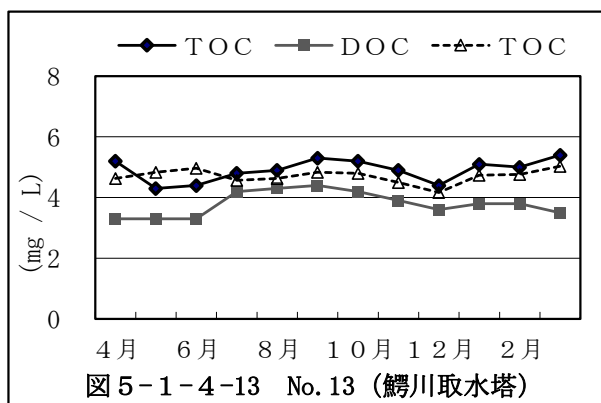


TOC経月変化 (北浦)

実線：R4年度、点線：過去3年間平均



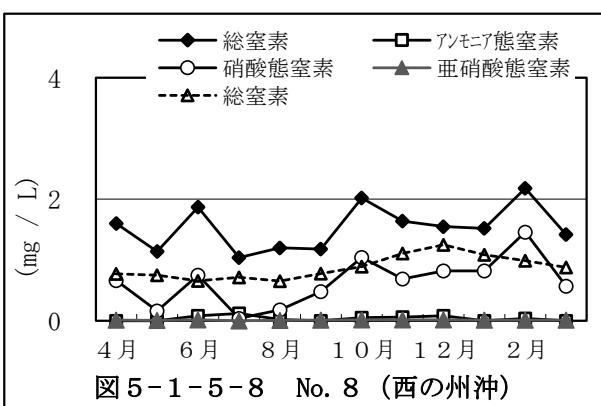
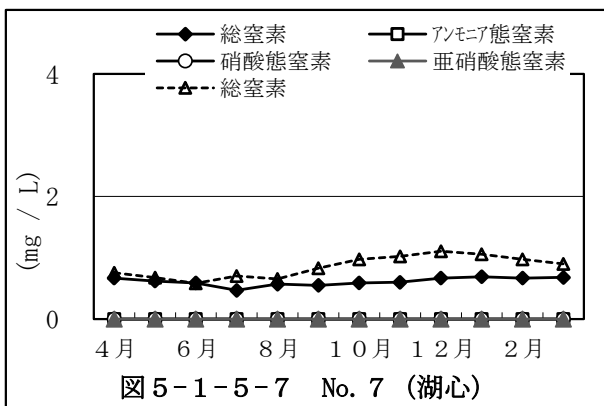
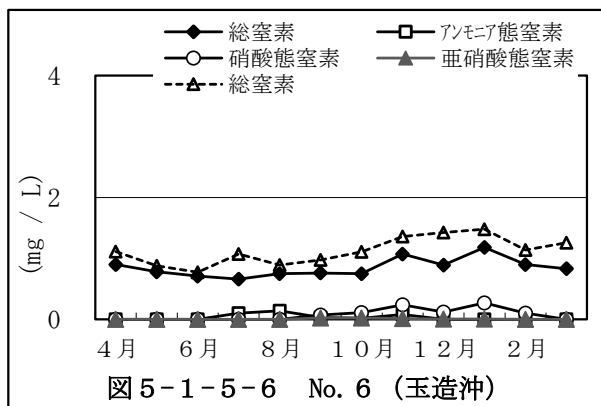
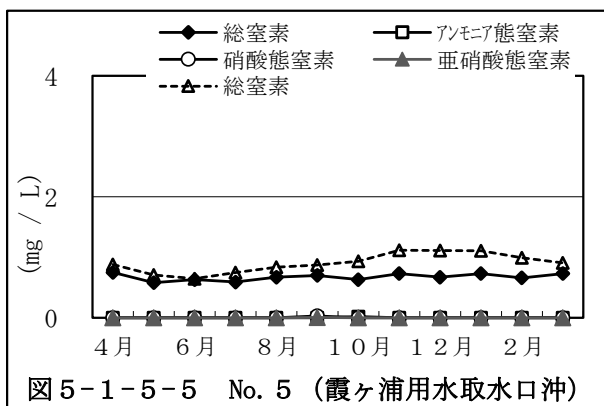
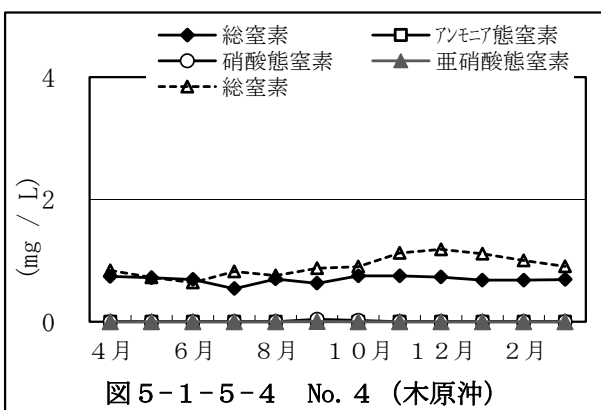
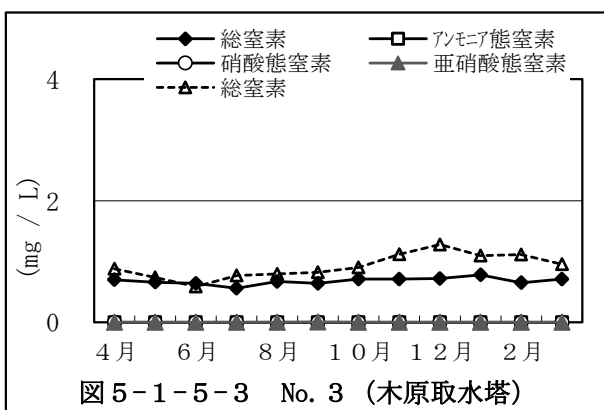
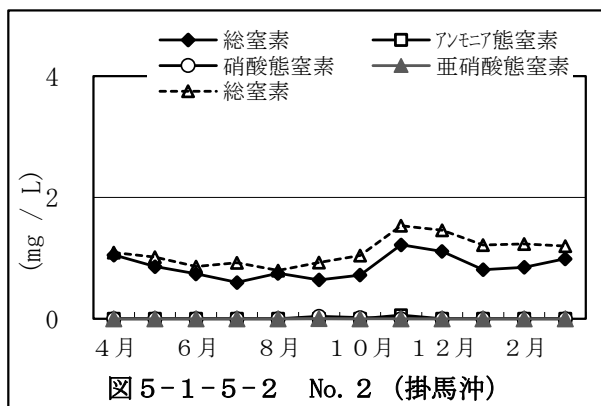
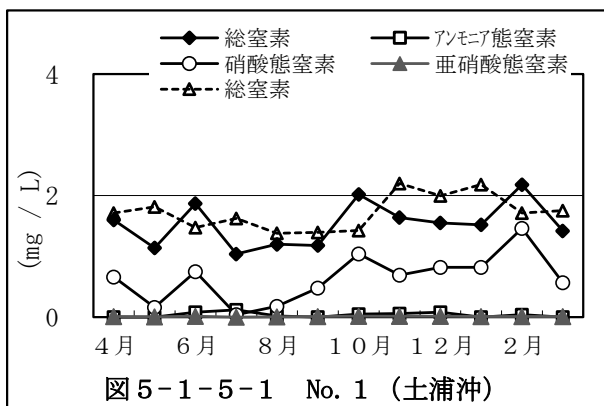
TOC経月変化 (鰯川、外浪逆浦)



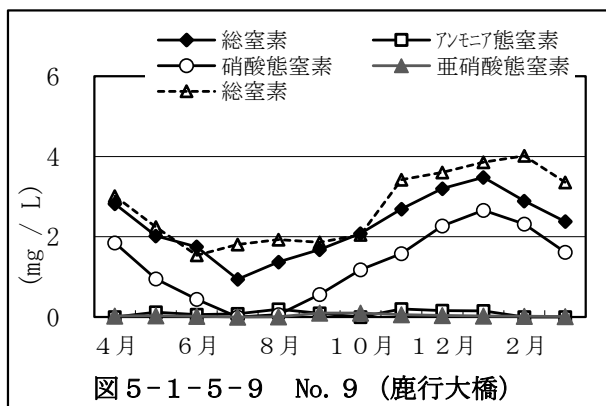


5.1.5 窒素類経月変化 (西浦)

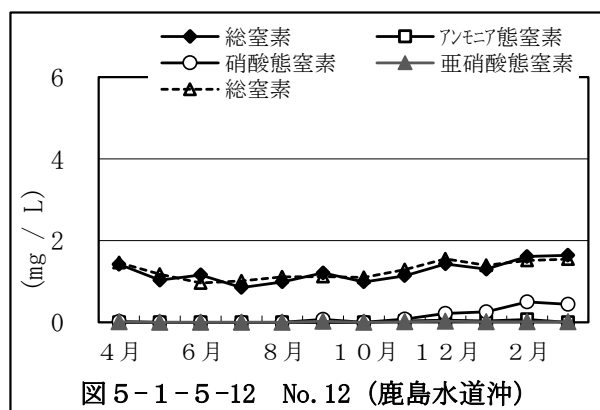
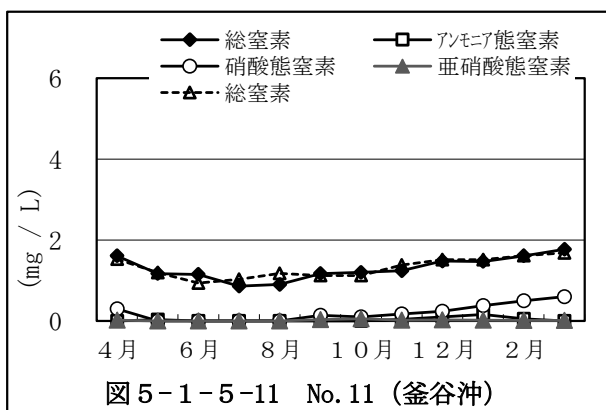
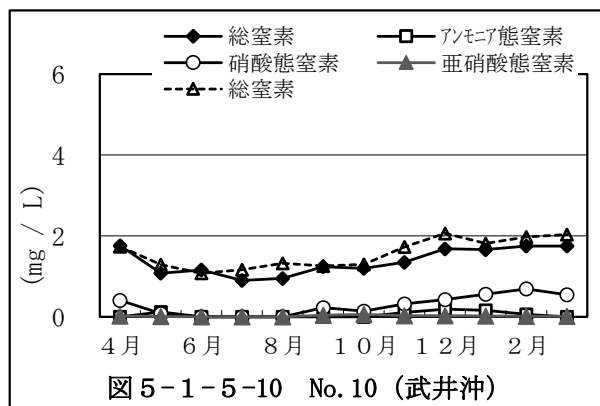
実線：R4年度、点線：過去3年間平均



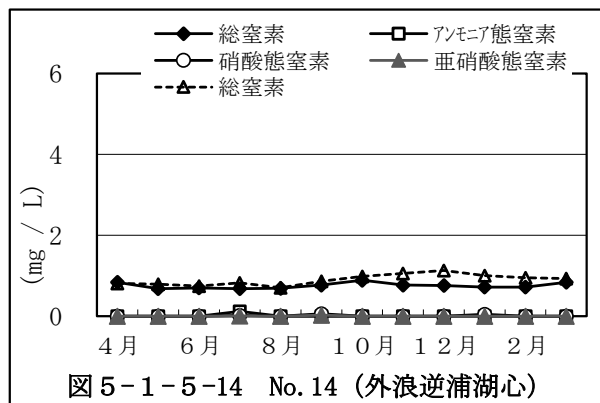
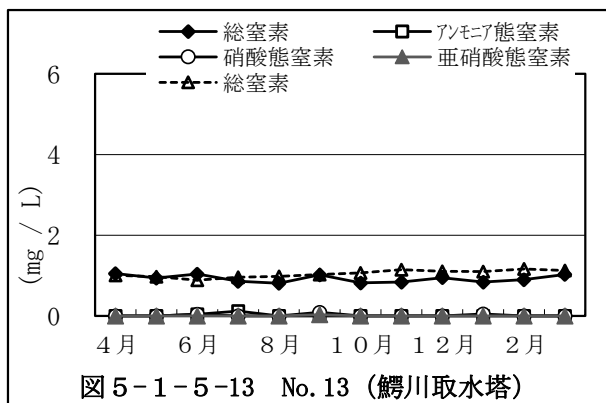
窒素類経月変化（北浦）



実線：R4年度、点線：過去3年間平均



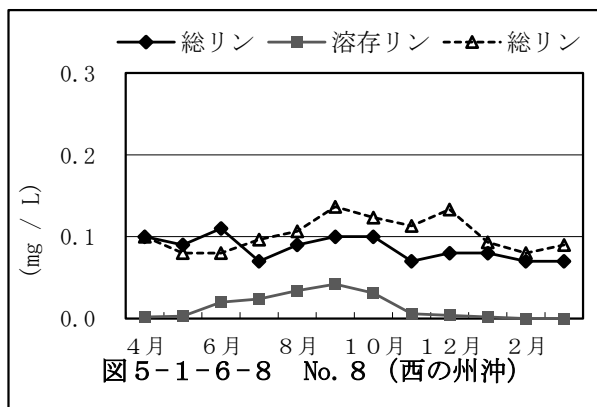
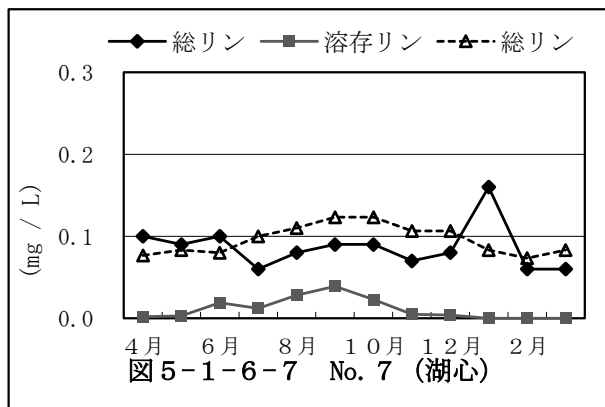
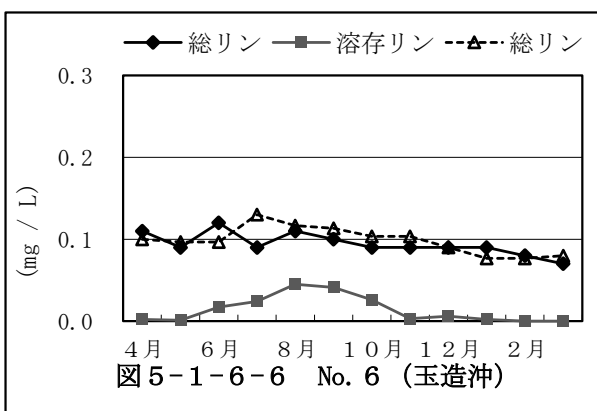
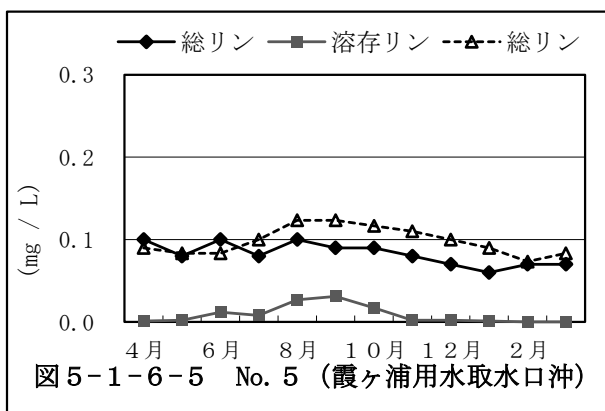
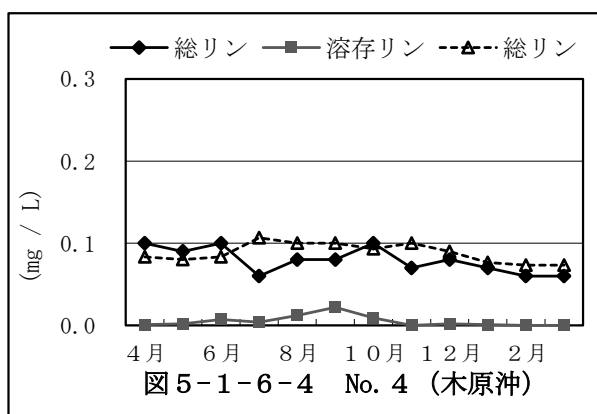
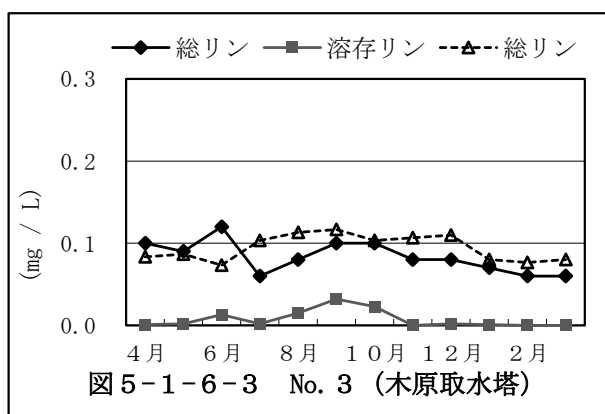
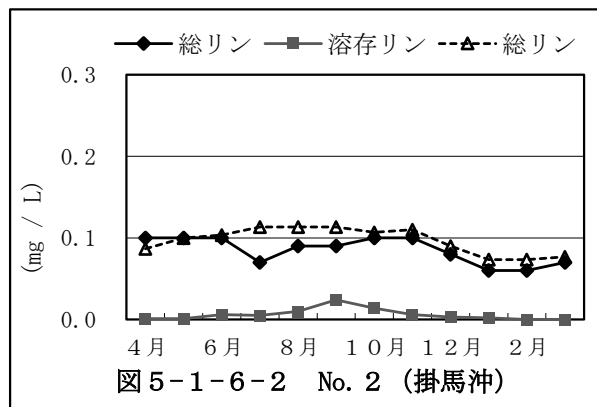
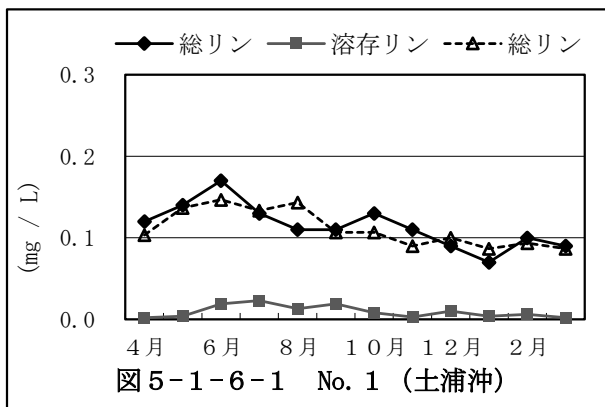
窒素類経月変化（鰯川、外浪逆浦）



注) 定量下限値(アンモニア態窒素：0.02 mg/L、亜硝酸態窒素：0.004 mg/L、硝酸態窒素：0.02 mg/L)未滿は、0 mg/Lで表示

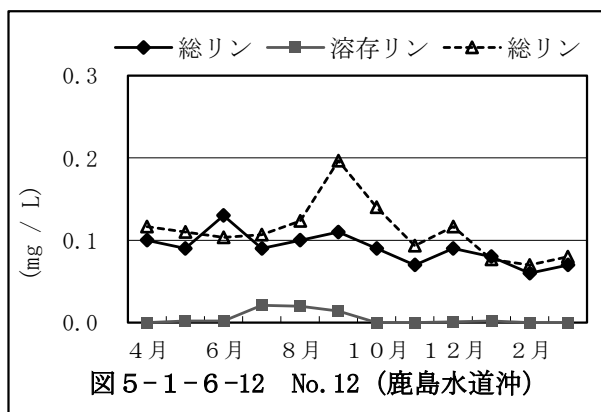
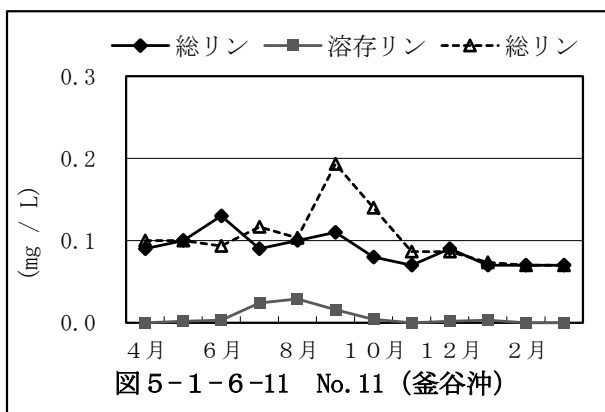
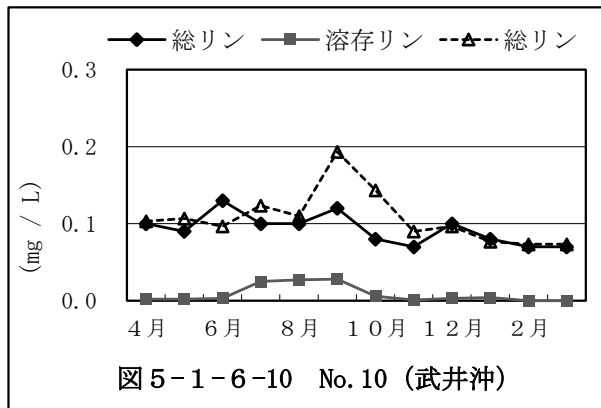
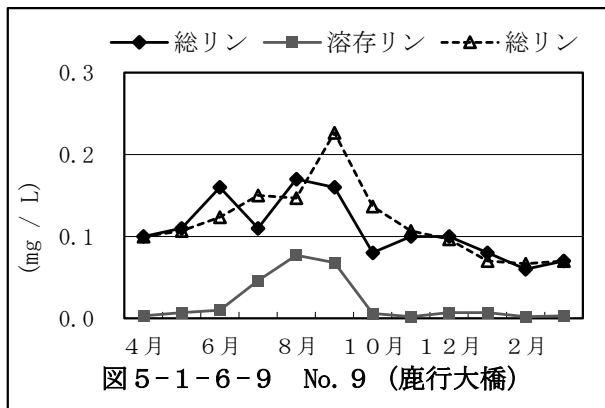
5.1.6 リン経月変化 (西浦)

実線：R4年度、点線：過去3年間平均

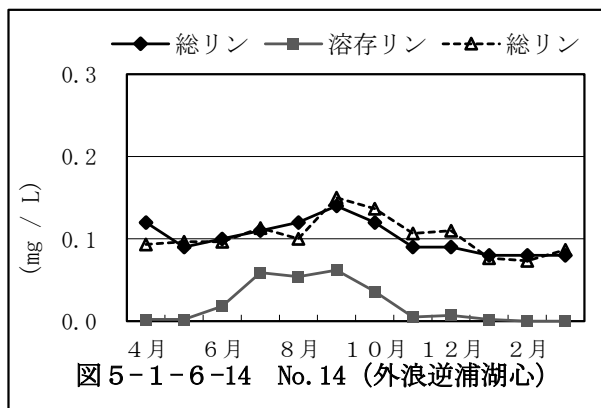
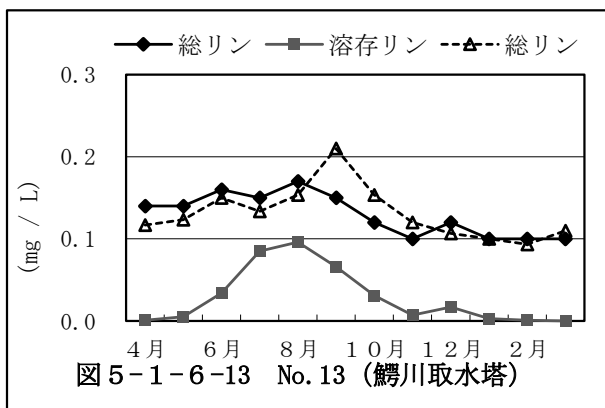


リン経月変化（北浦）

実線：R4年度、点線：過去3年間平均



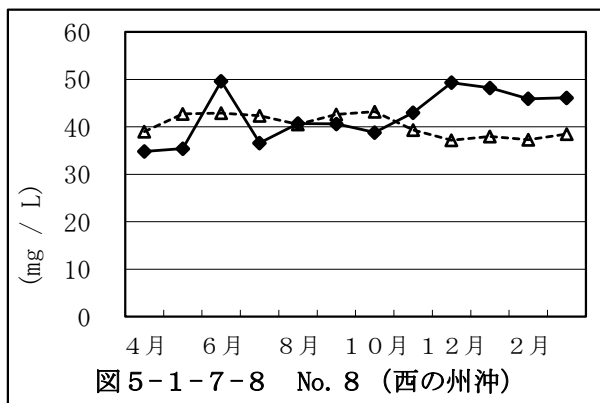
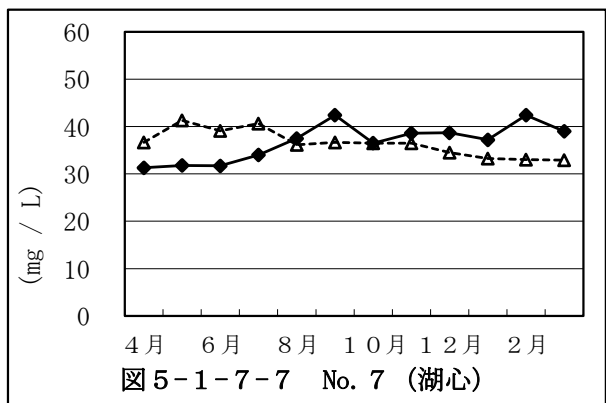
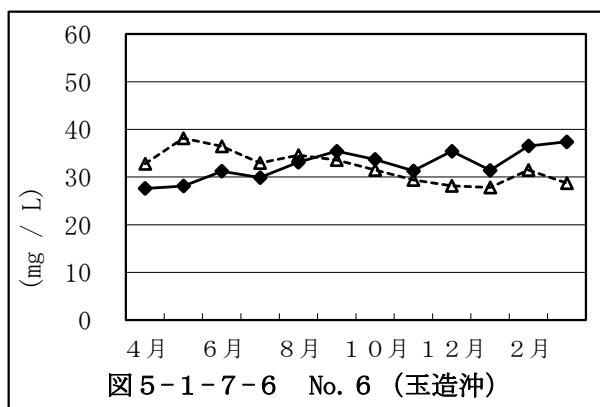
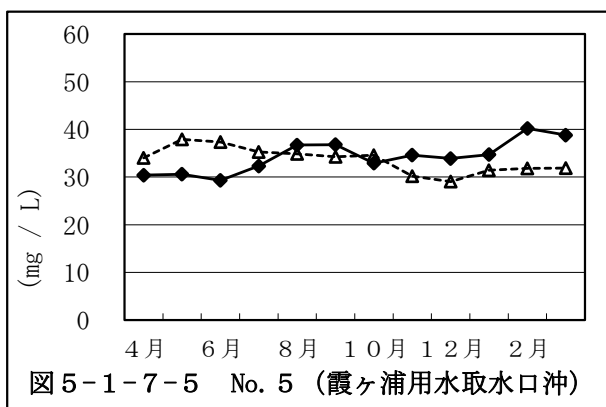
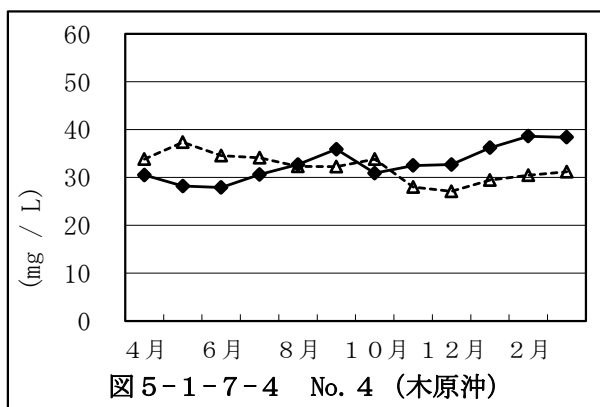
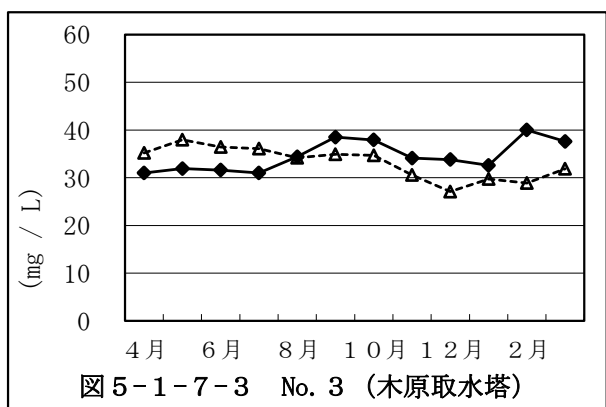
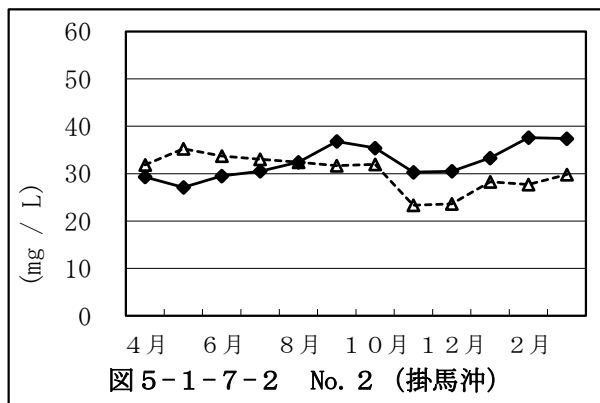
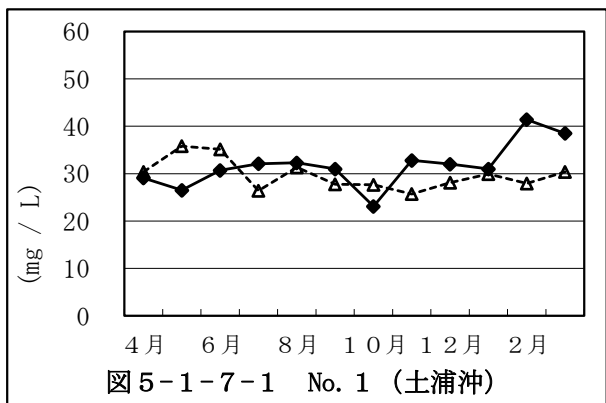
リン経月変化（鰯川、外浪逆浦）



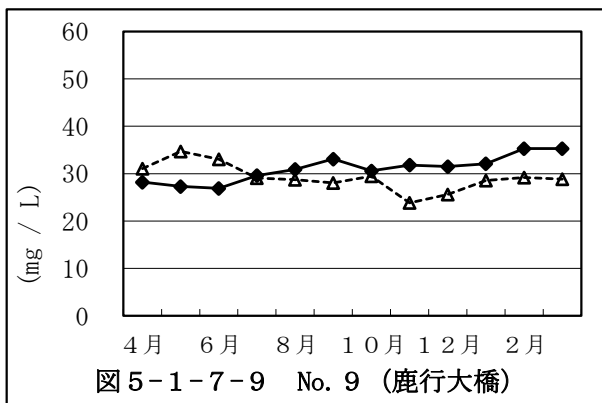
注) 定量下限値(0.001 mg/L)未満は、0 mg/Lで表示

5.1.7 塩化物イオン経月変化 (西浦)

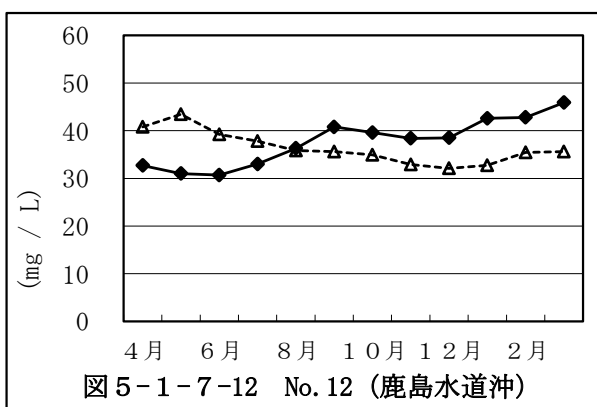
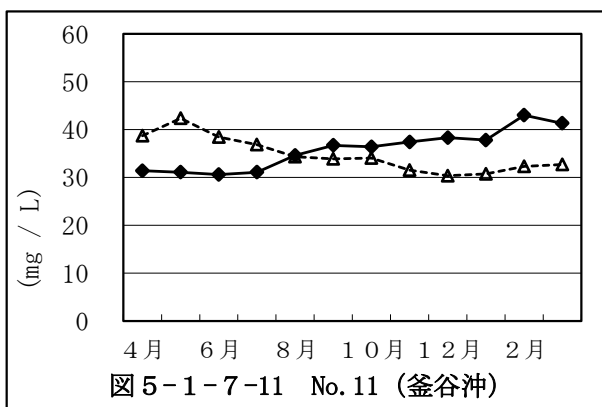
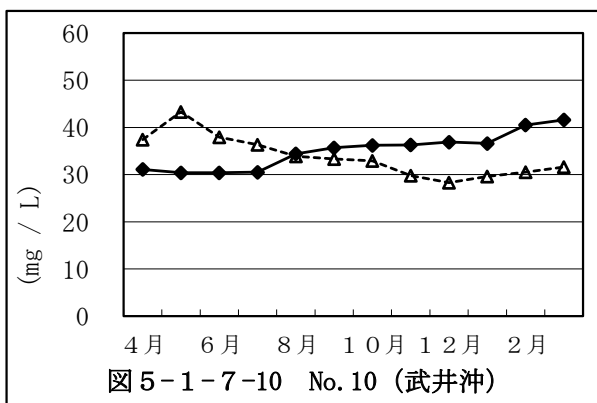
実線：R4年度、点線：過去3年間平均



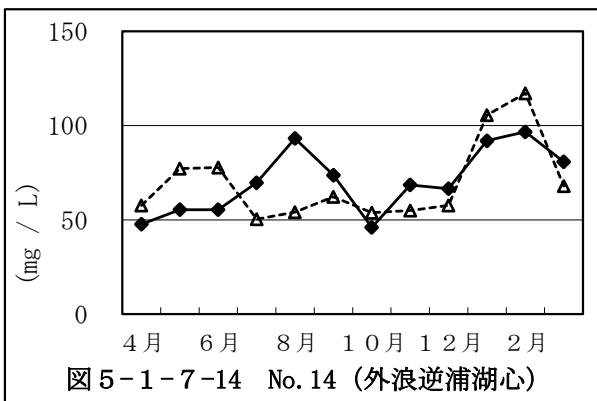
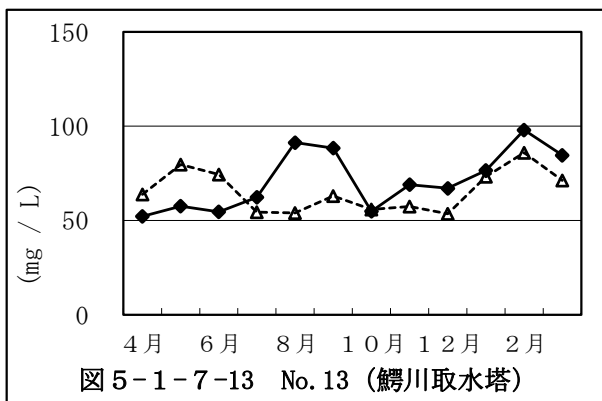
塩化物イオン経月変化（北浦）



実線：R4年度、点線：過去3年間平均

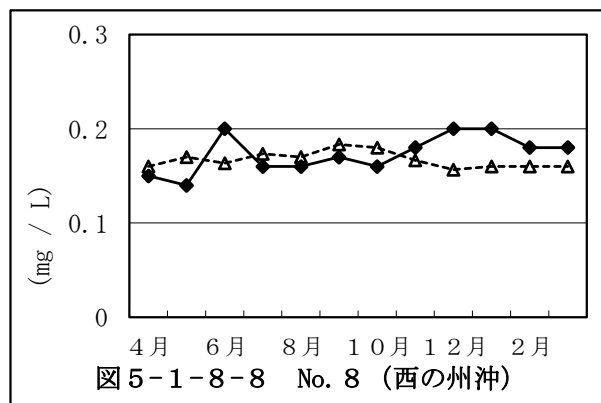
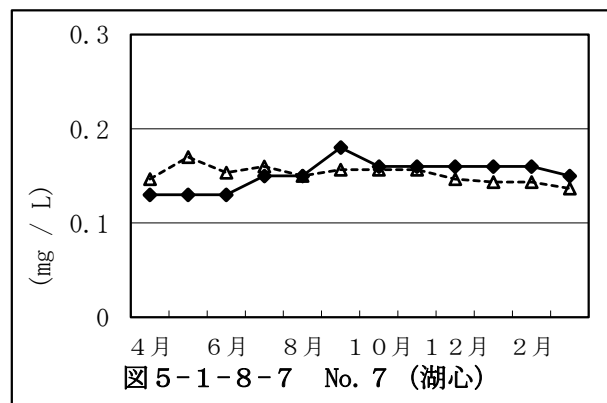
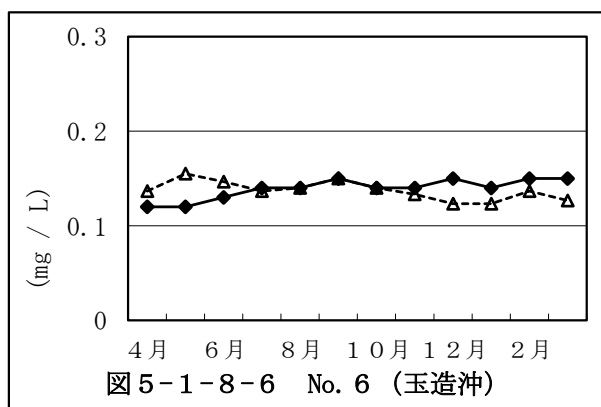
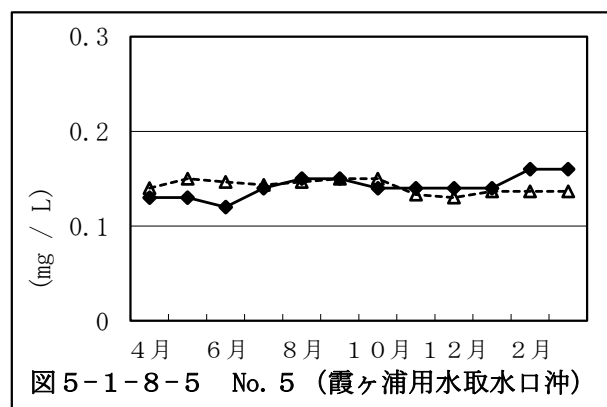
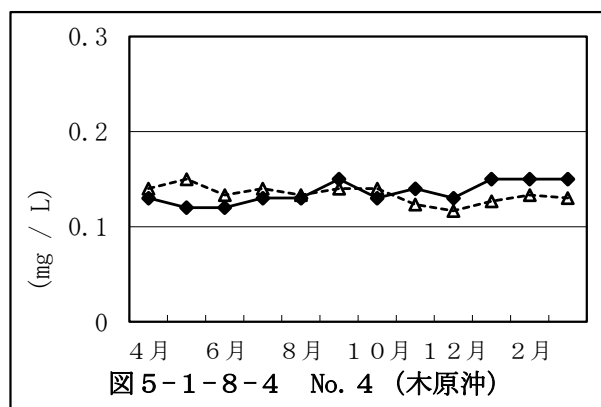
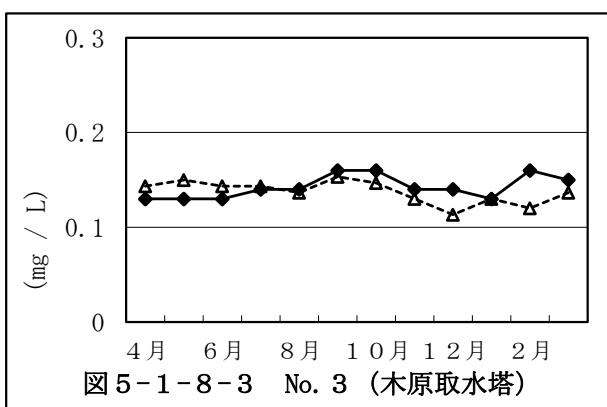
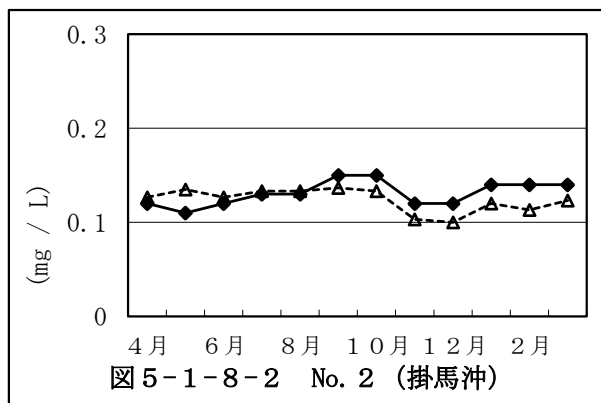
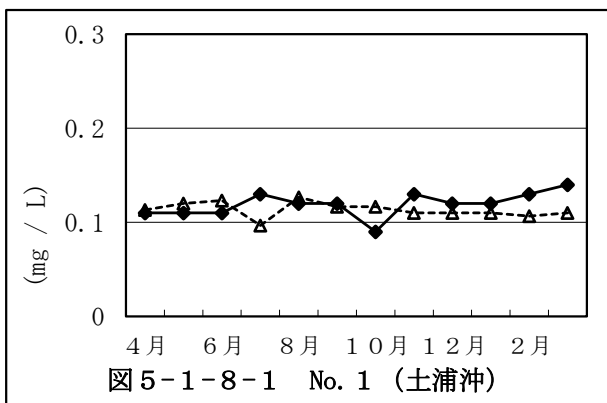


塩化物イオン経月変化（鰐川、外浪逆浦）

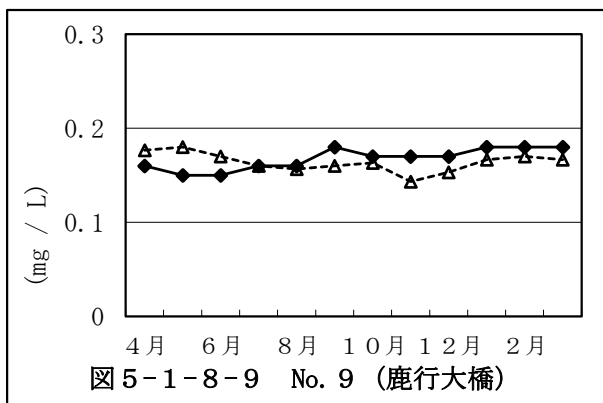


5.1.8 臭化物イオン経月変化 (西浦)

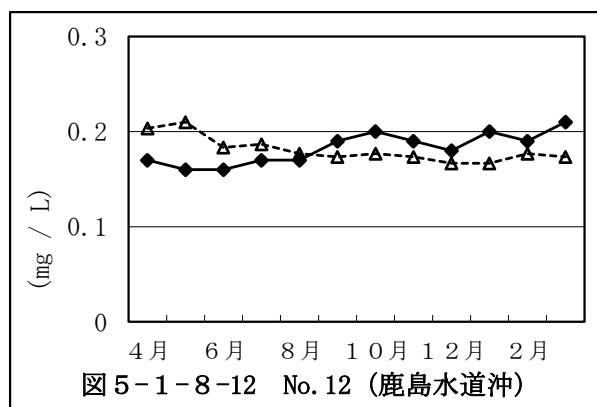
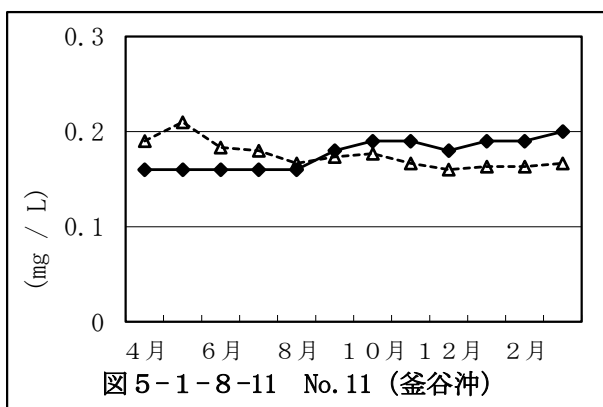
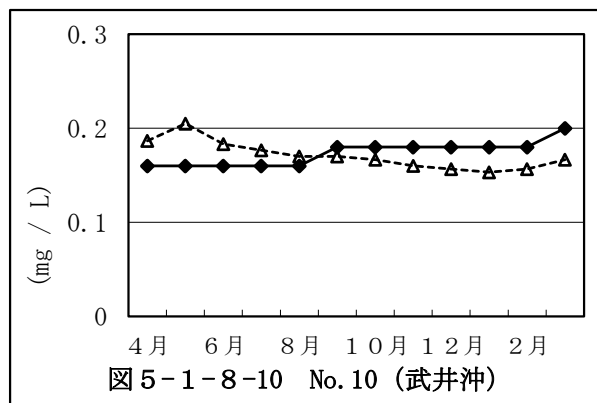
実線：R4年度、点線：過去3年間平均



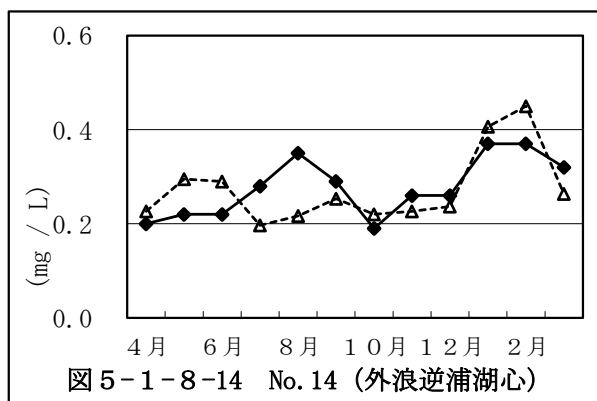
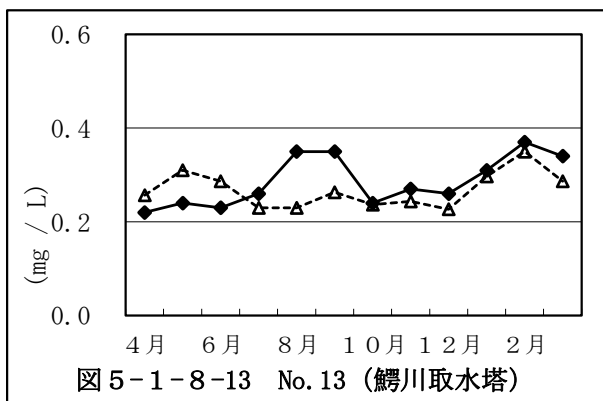
臭化物イオン経月変化（北浦）



実線：R4年度、点線：過去3年間平均



臭化物イオン経月変化（鰐川、外浪逆浦）

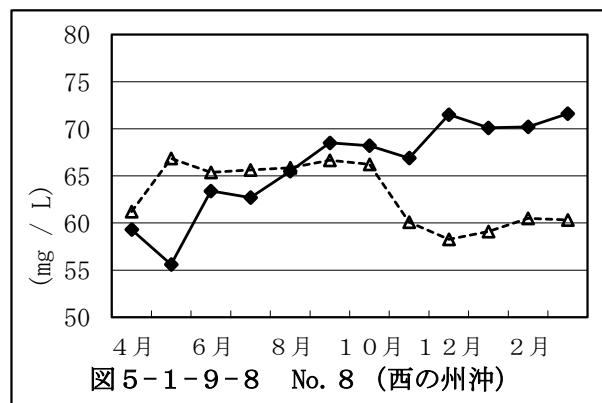
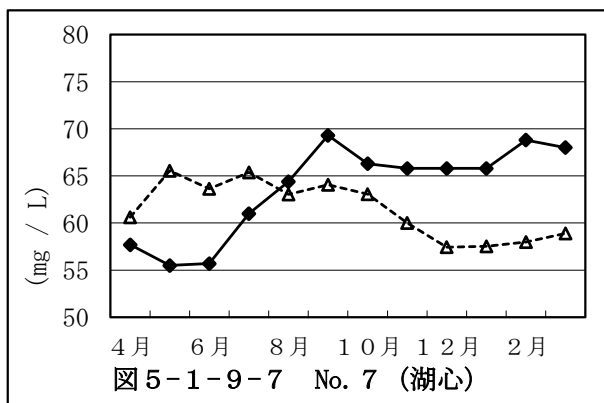
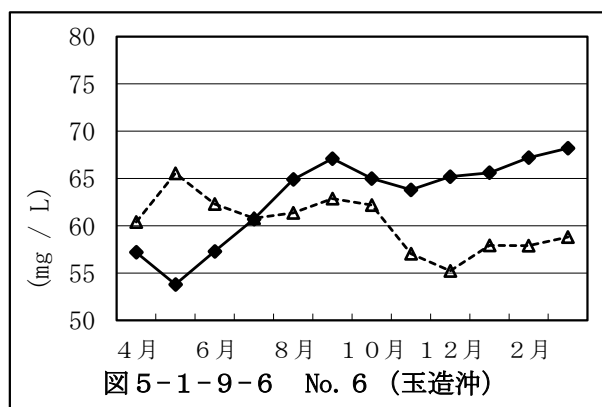
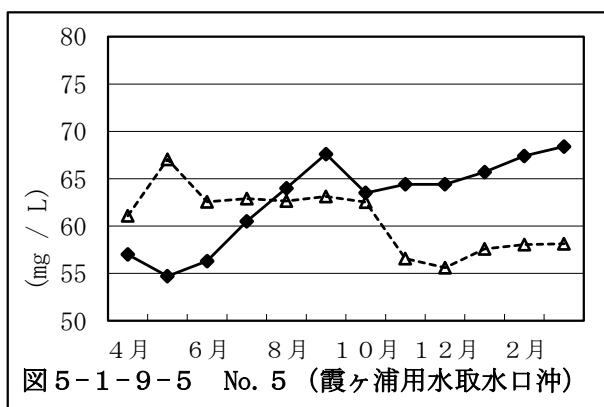
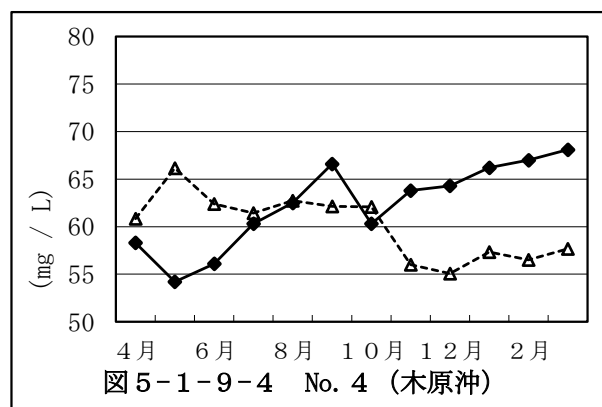
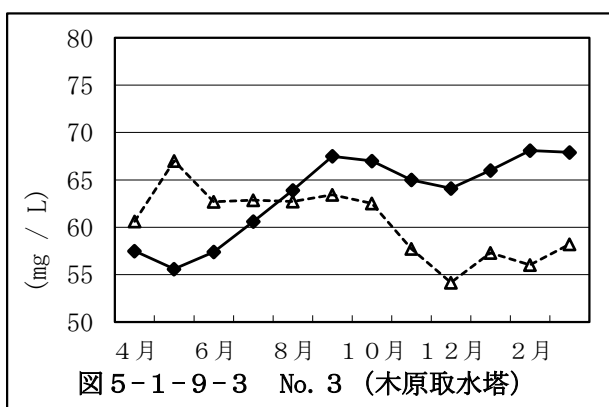
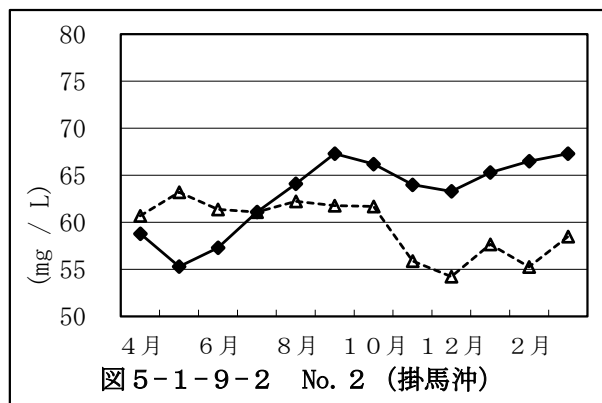
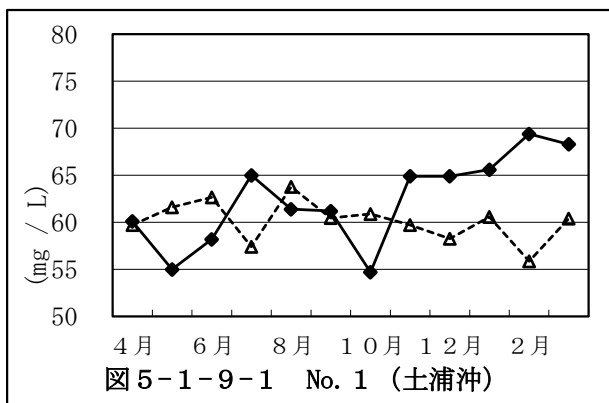


注) 定量下限値(0.10 mg/L)未満は、0 mg/Lで表示



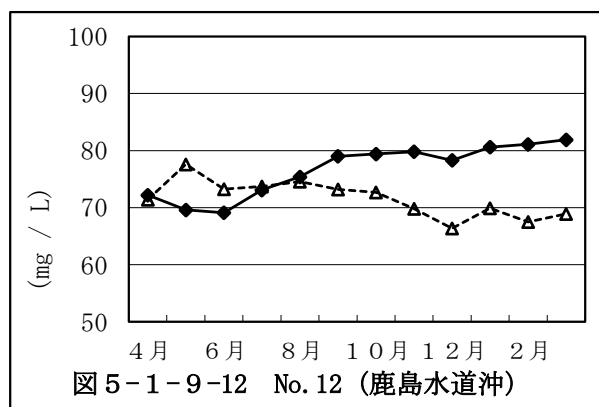
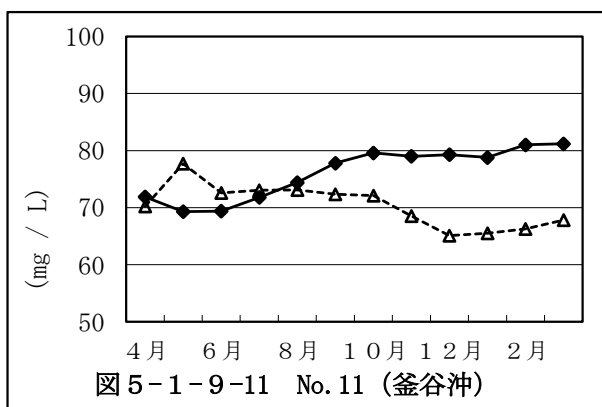
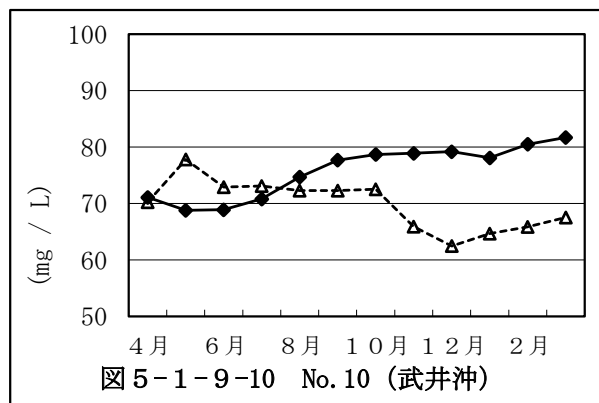
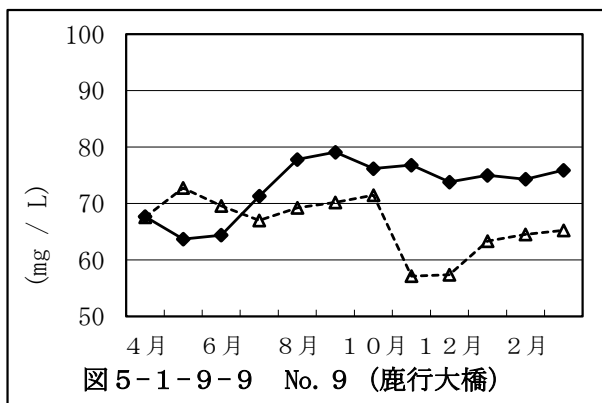
5.1.9 総アルカリ度経月変化 (西浦)

実線：R4年度、点線：過去3年間平均

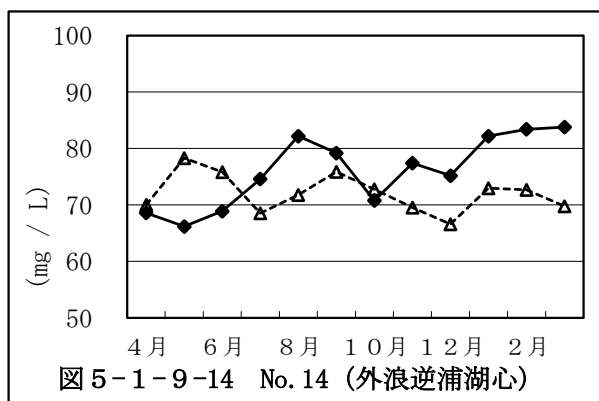
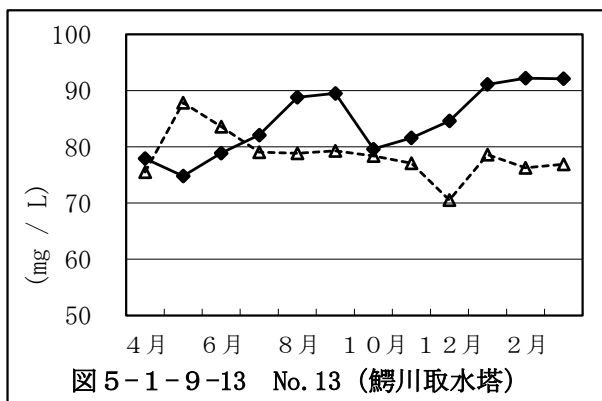


総アルカリ度経月変化（北浦）

実線：R4年度、点線：過去3年間平均

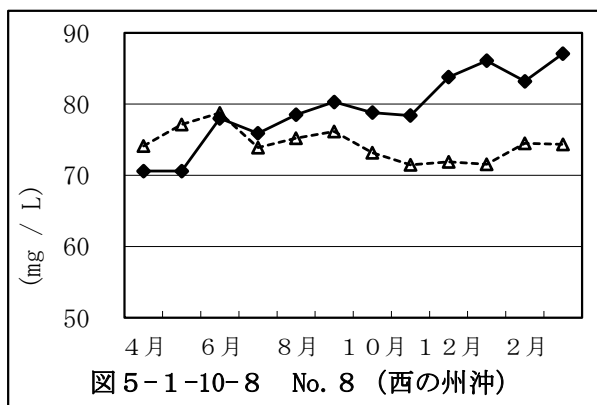
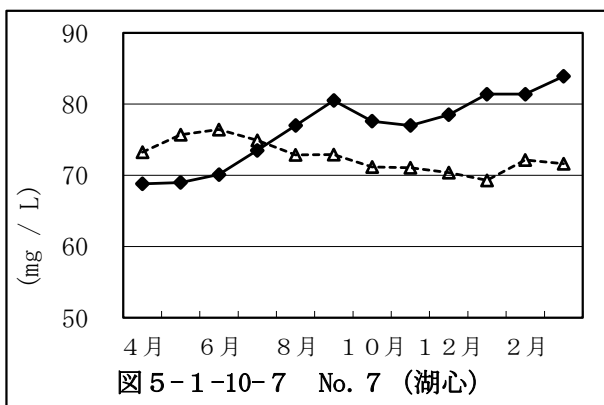
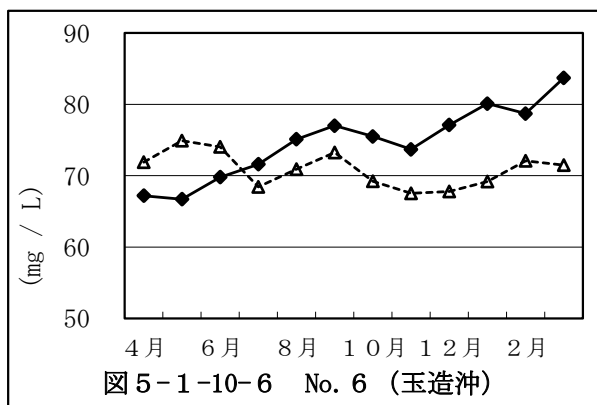
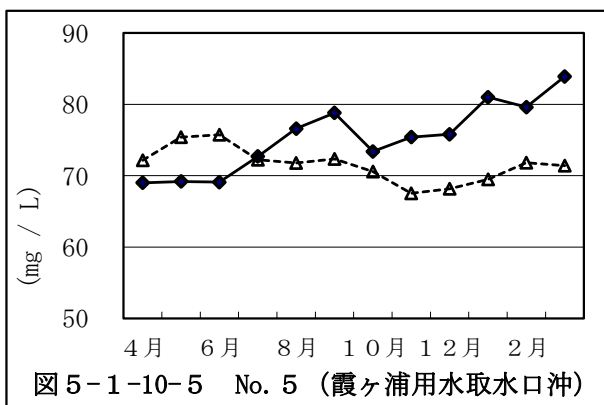
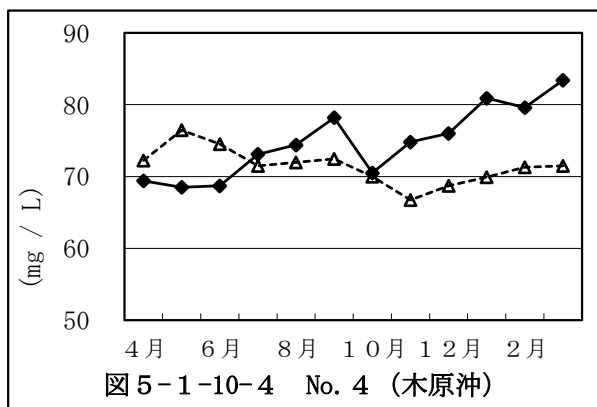
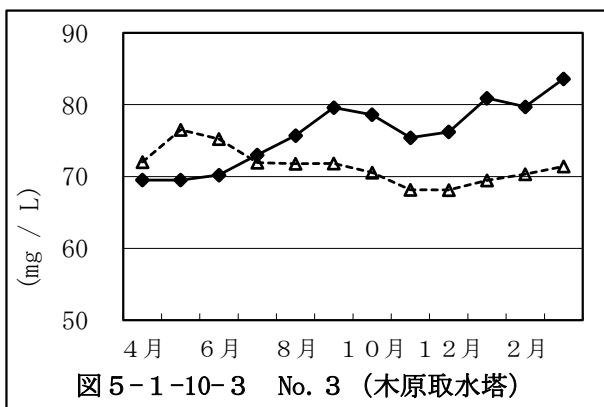
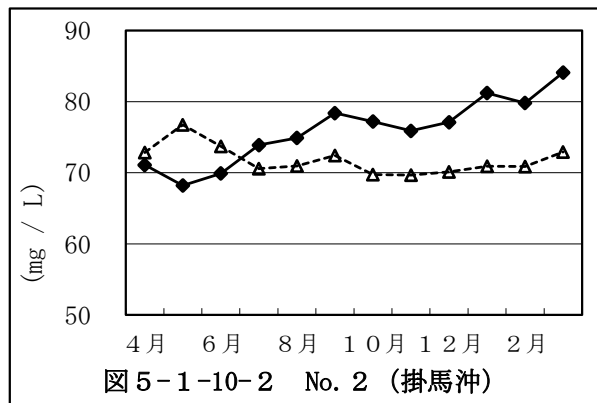
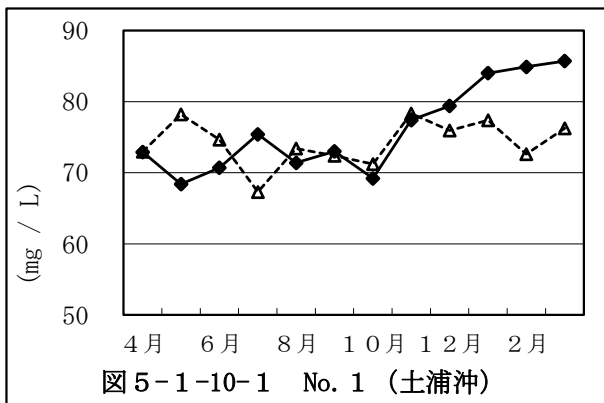


総アルカリ度経月変化（鰯川、外浪逆浦）



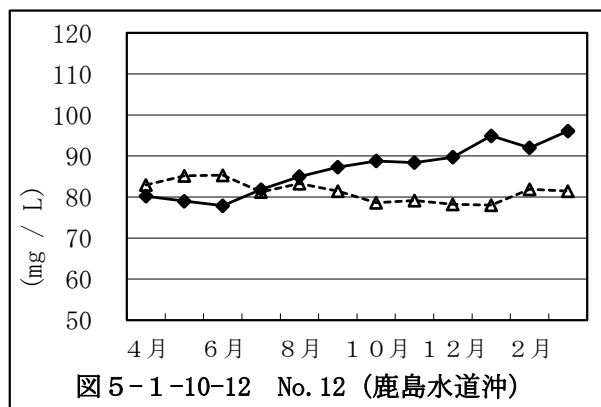
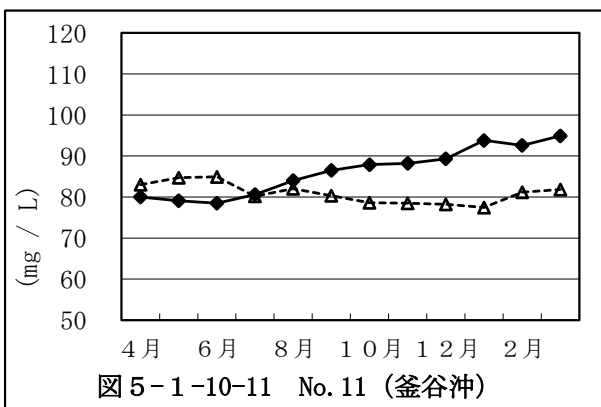
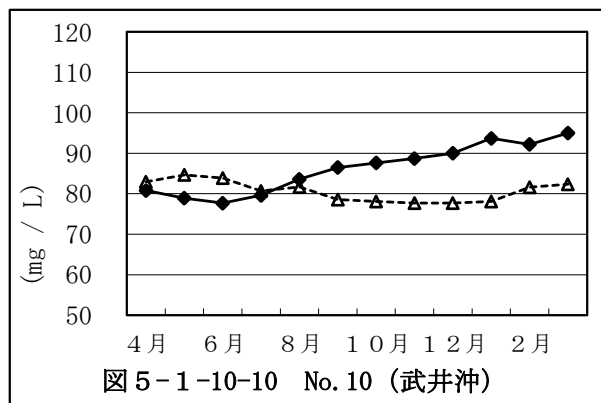
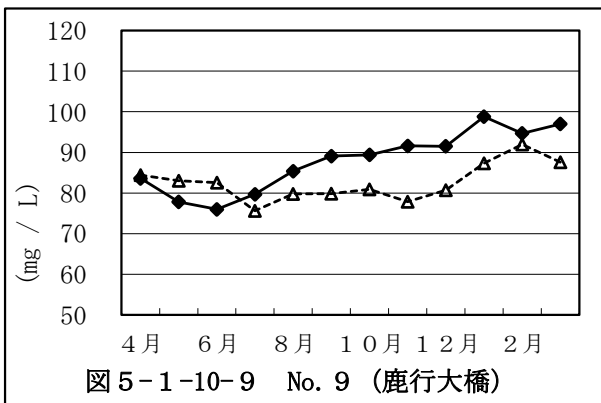
5.1.10 総硬度経月変化 (西浦)

実線：R4年度、点線：過去3年間平均

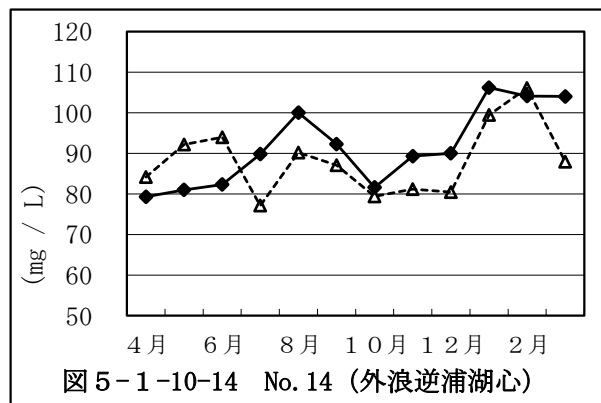
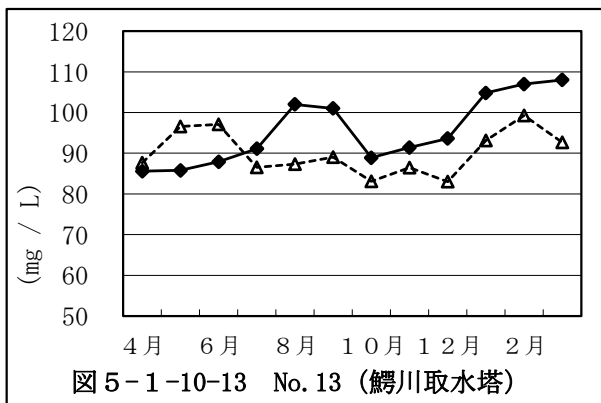


総硬度経月変化（北浦）

実線：R4年度、点線：過去3年間平均

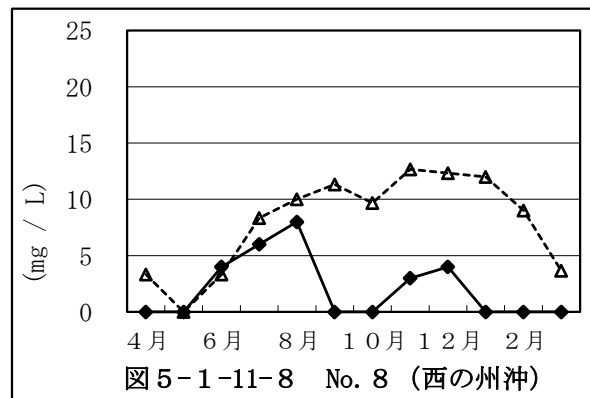
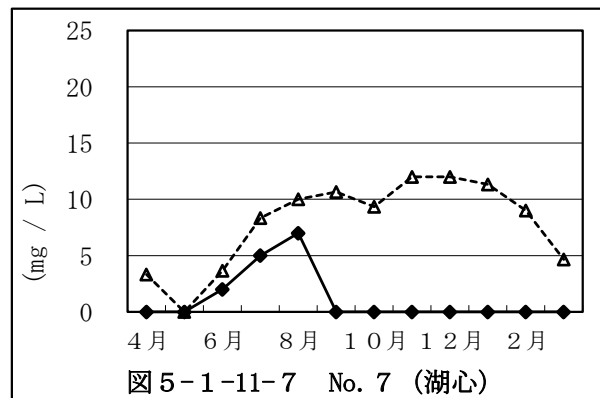
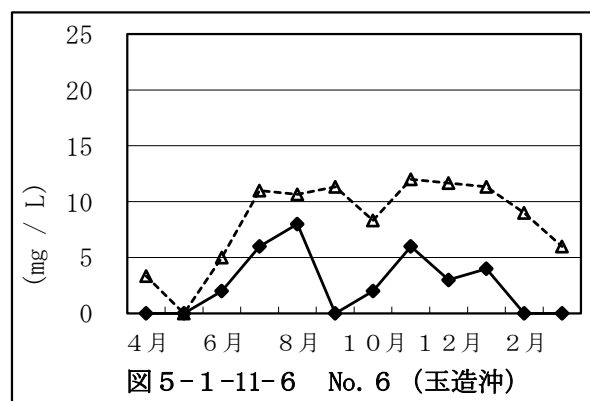
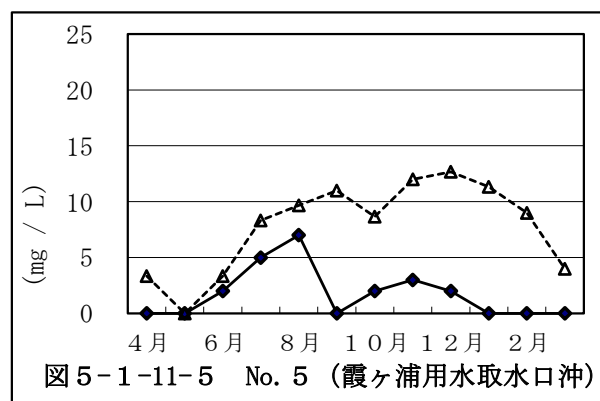
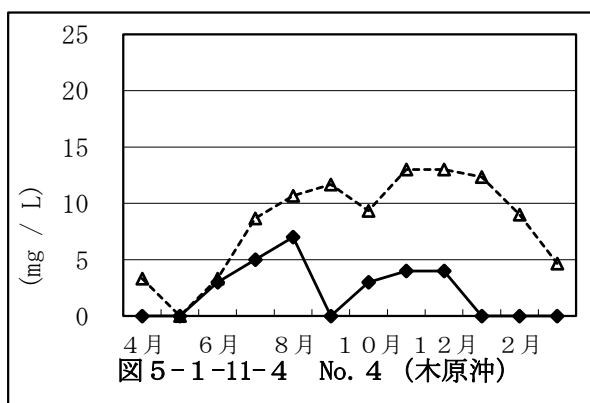
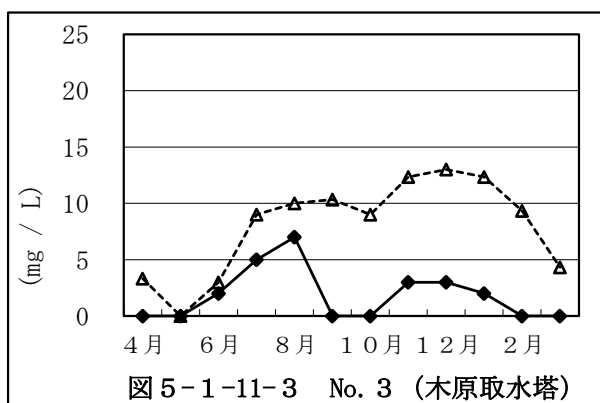
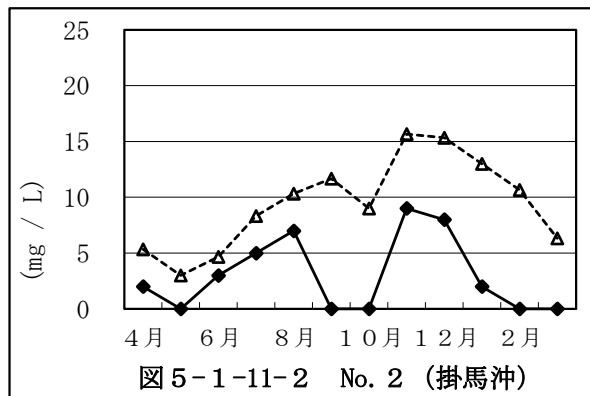
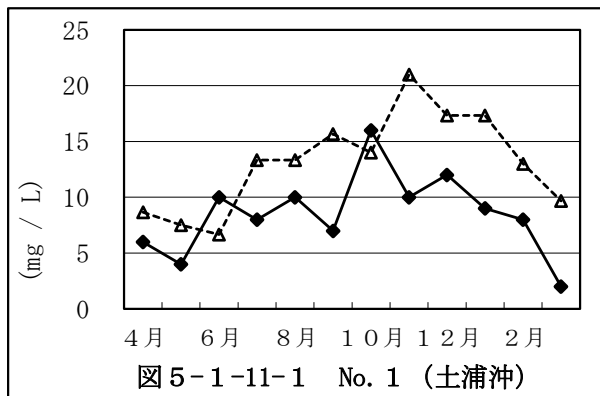


総硬度経月変化（鰐川、外浪逆浦）



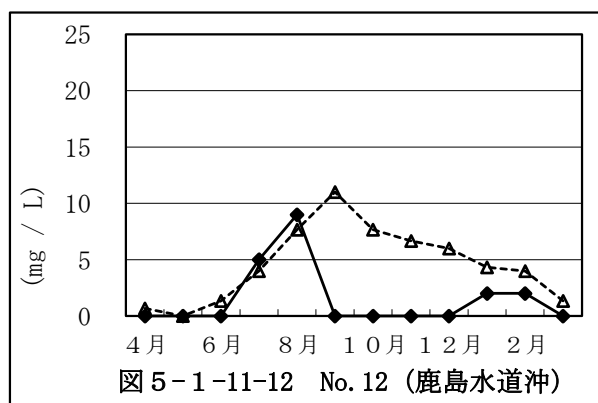
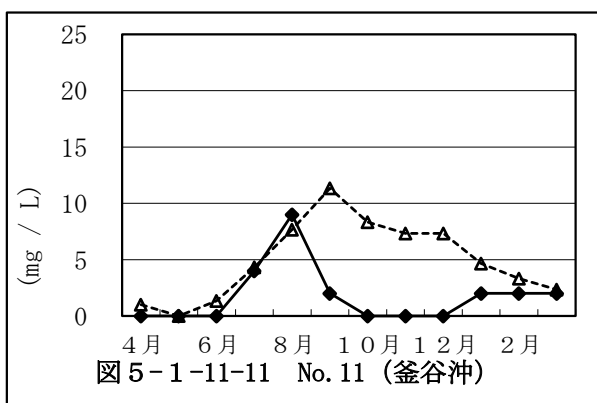
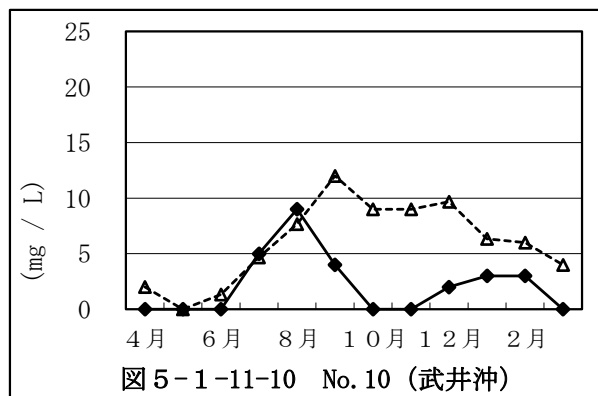
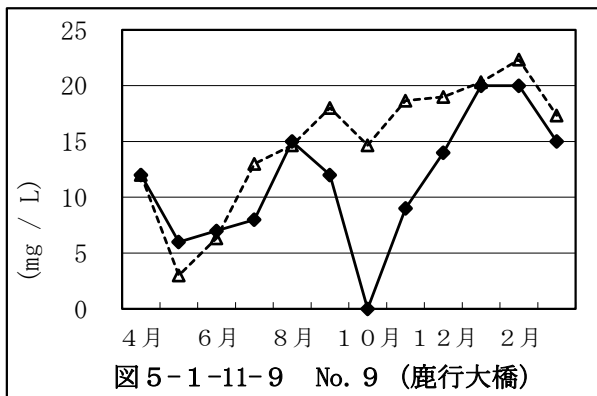
5.1.11 溶性ケイ酸経月変化 (西浦)

実線：R4年度、点線：過去3年間平均

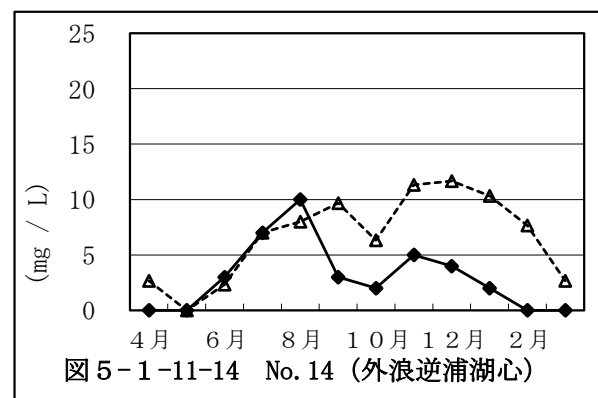
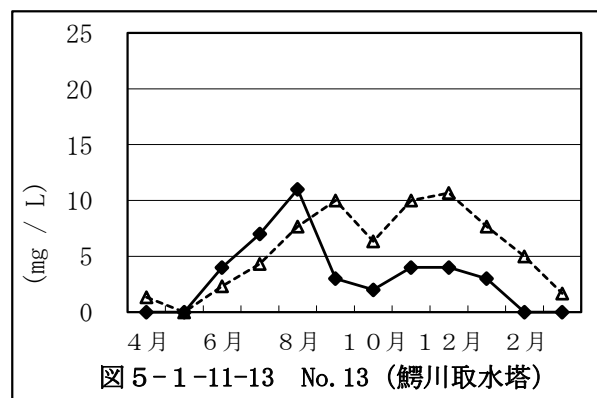


溶性ケイ酸経月変化（北浦）

実線：R4年度、点線：過去3年間平均



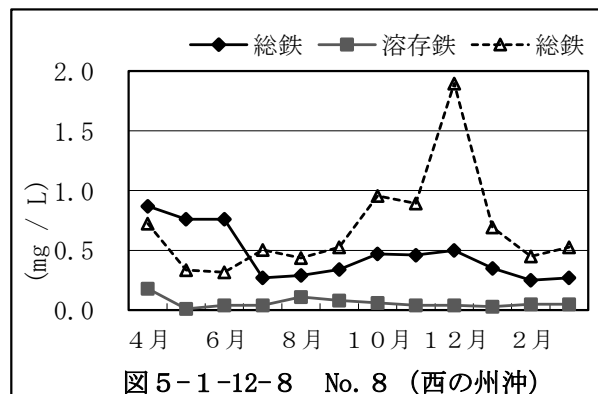
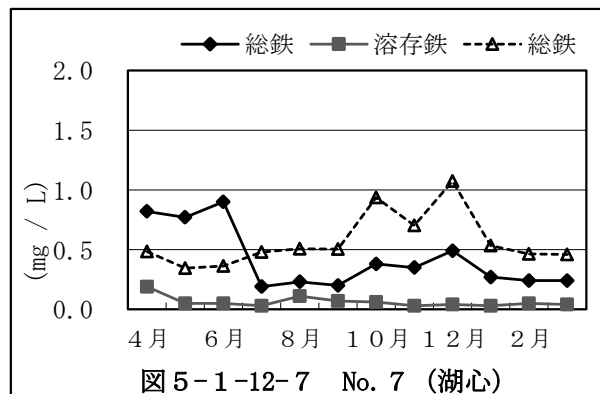
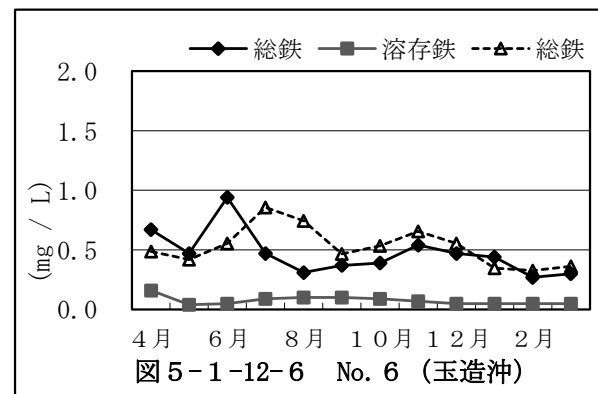
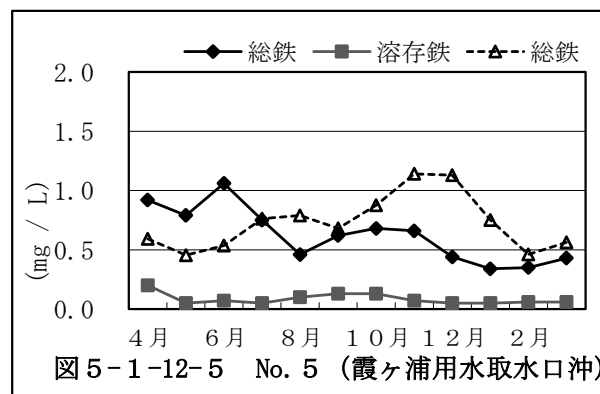
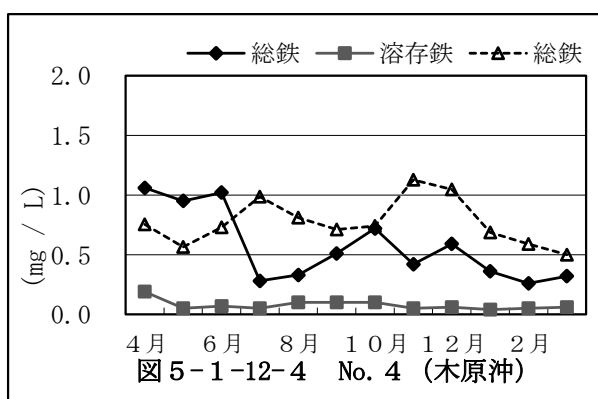
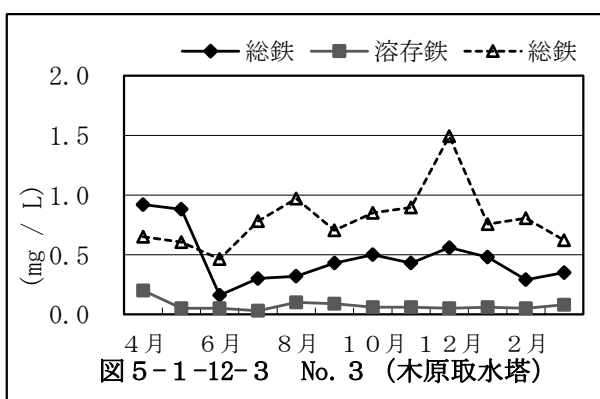
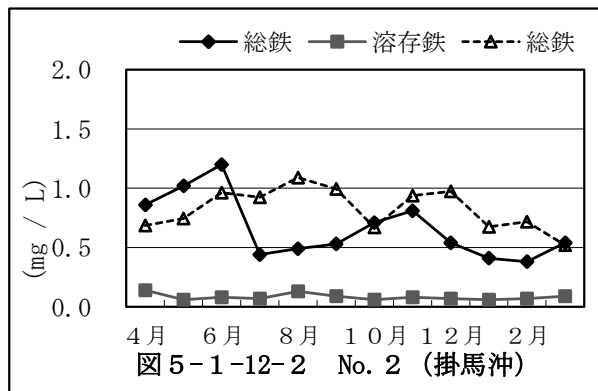
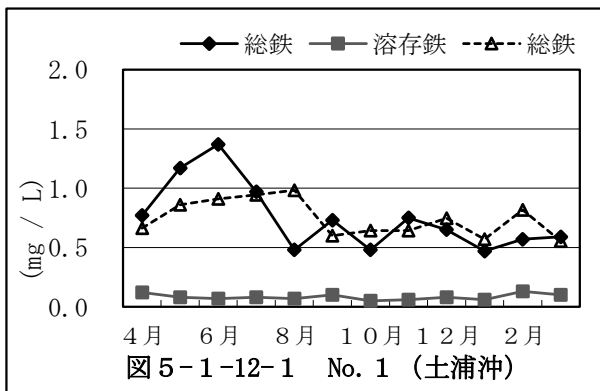
溶性ケイ酸経月変化（鰐川、外浪逆浦）



注) 定量下限値(2 mg/L)未満は、0 mg/Lで表示

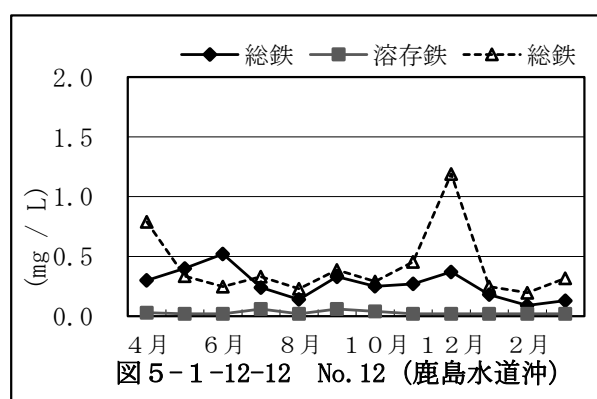
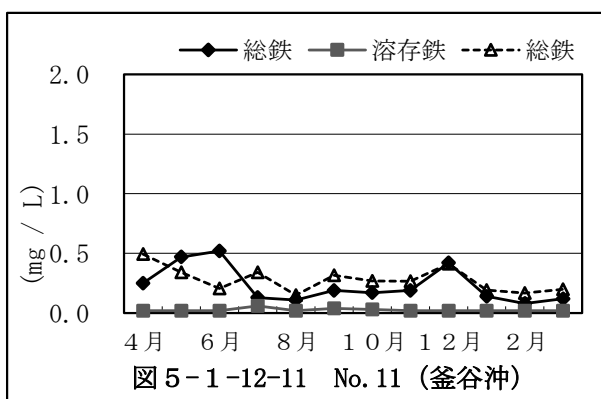
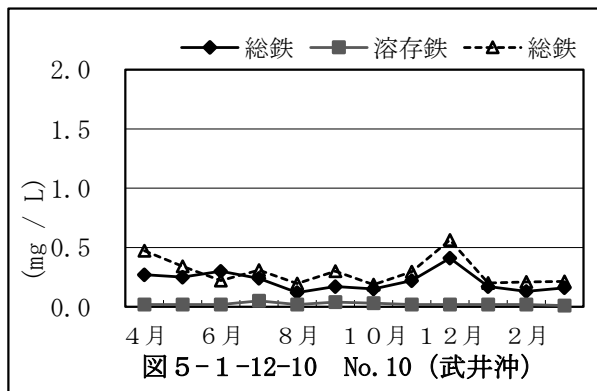
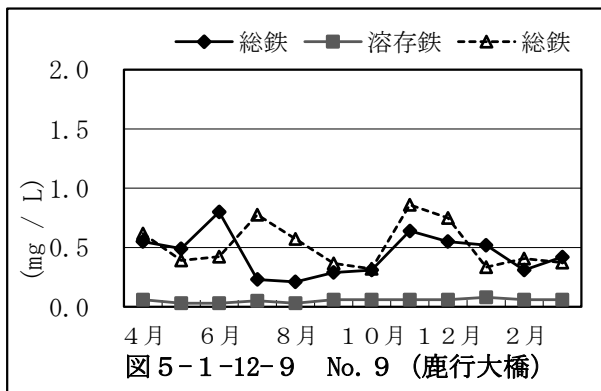
5.1.12 鉄経月変化 (西浦)

実線：R4年度、点線：過去3年間平均



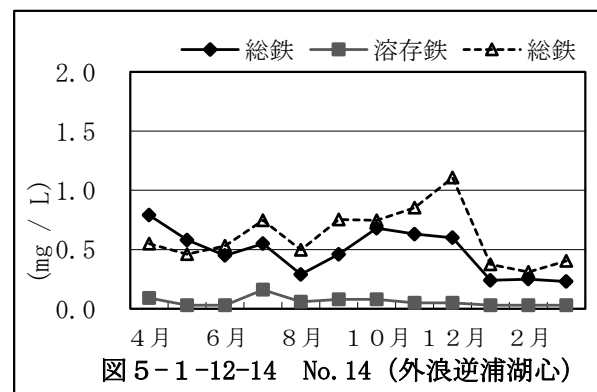
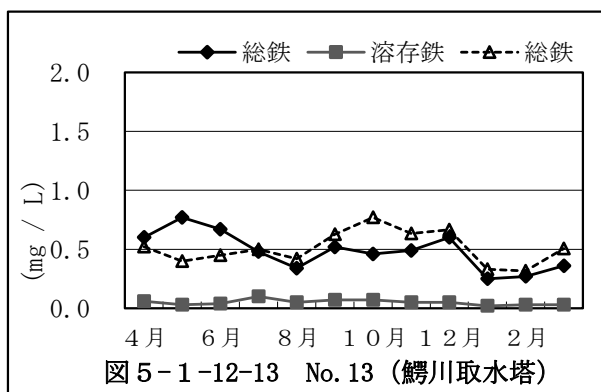
鉄経月変化（北浦）

実線：R4年度、点線：過去3年間平均



鉄経月変化（鰯川、外浪逆浦）

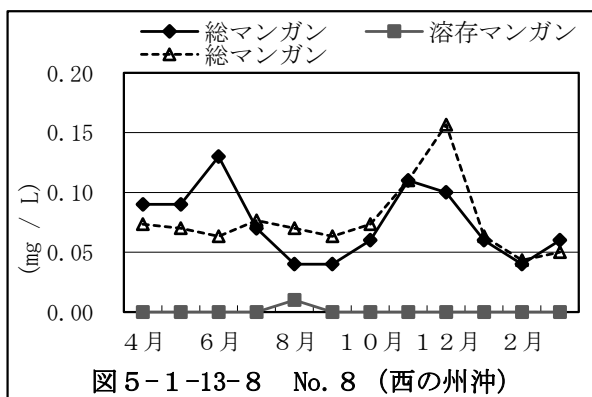
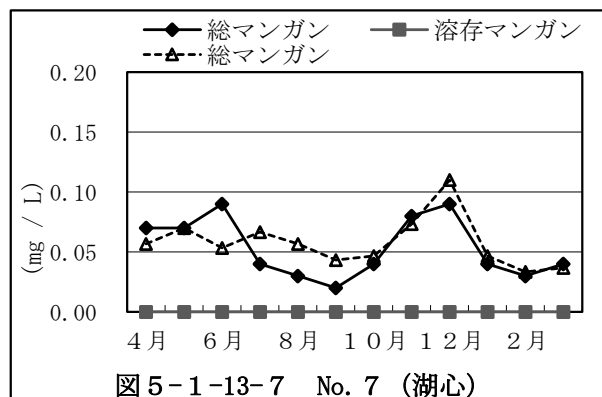
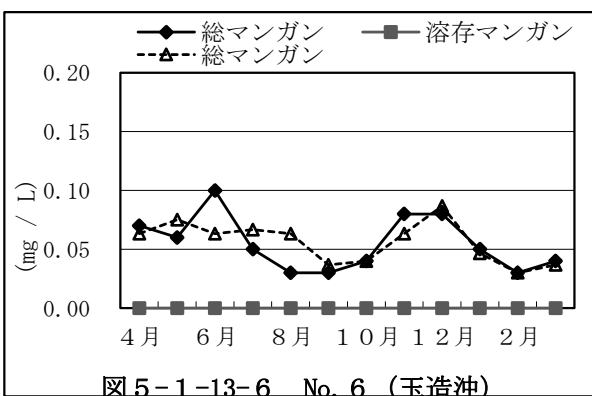
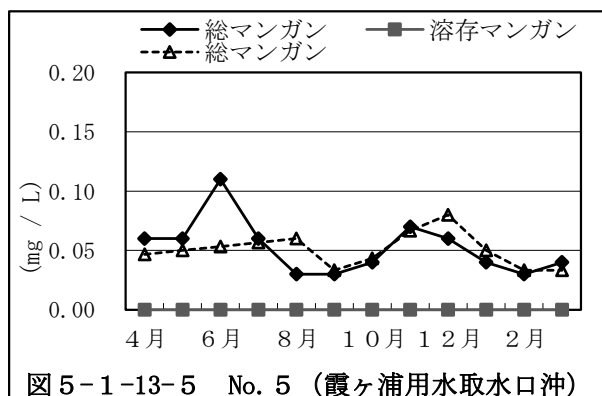
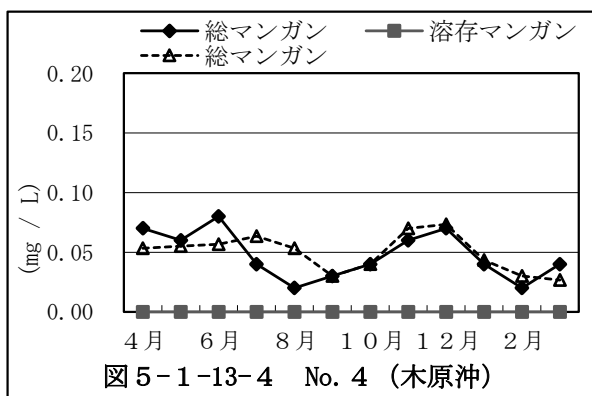
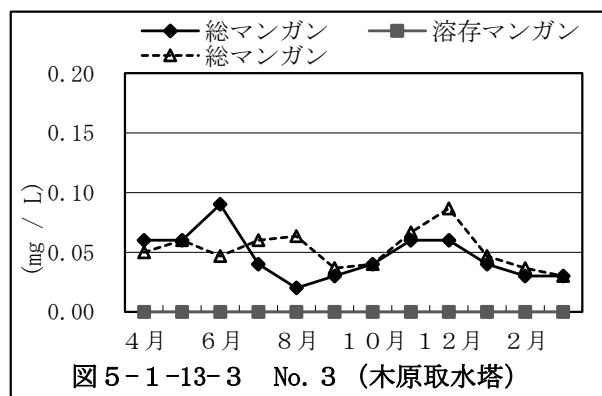
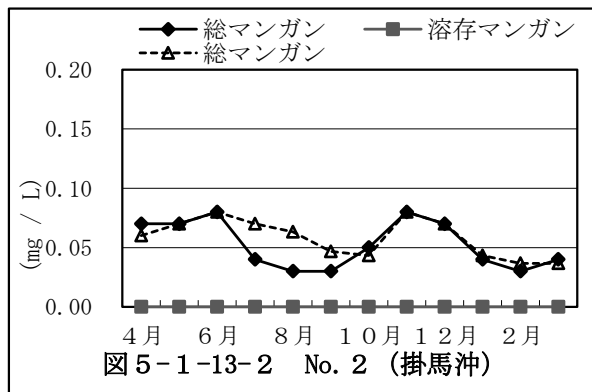
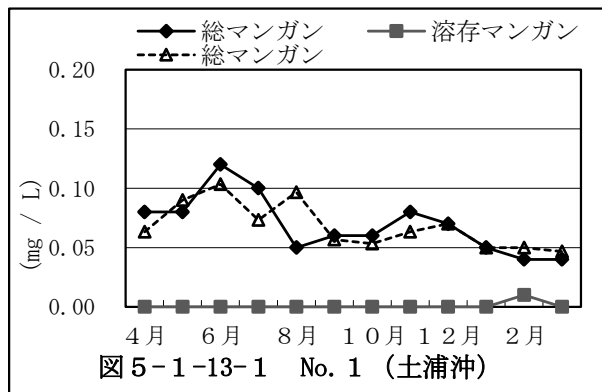
ましこ





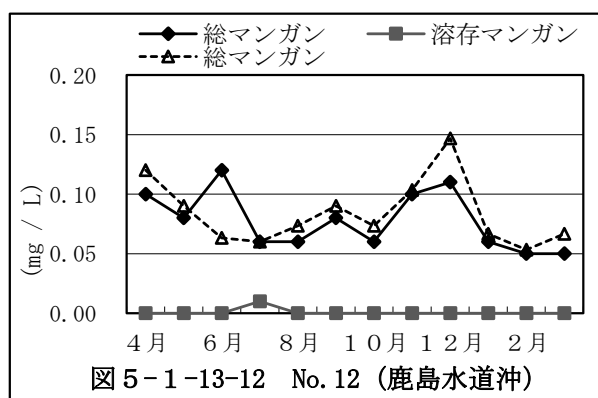
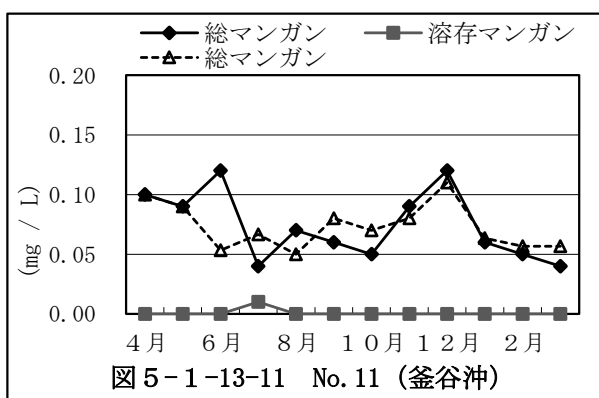
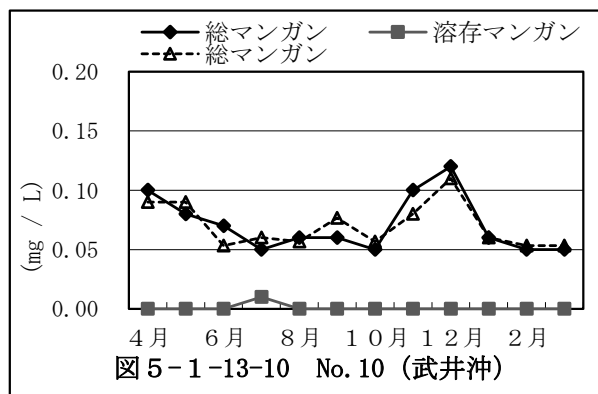
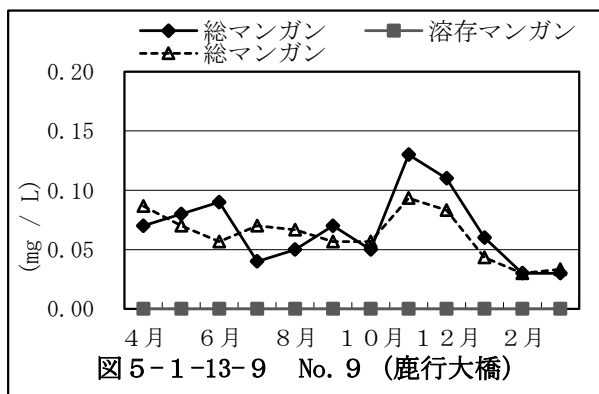
5.1.13 マンガン経月変化 (西浦)

実線：R4年度、点線：過去3年間平均

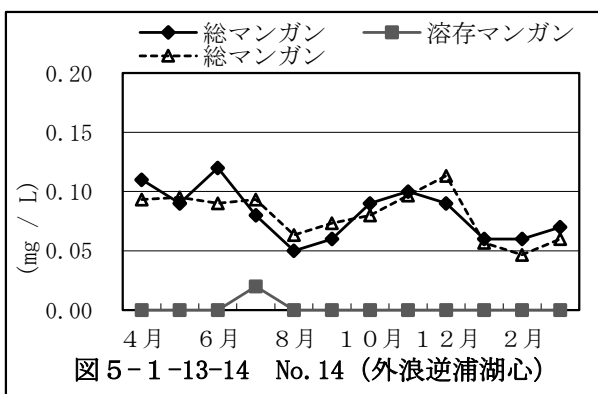
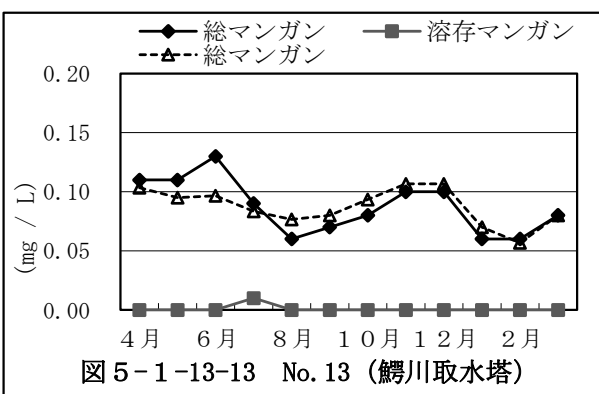


マンガン経月変化（北浦）

実線：R4年度、点線：過去3年間平均



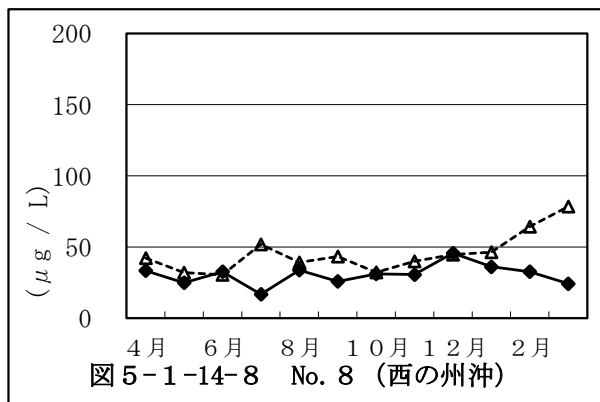
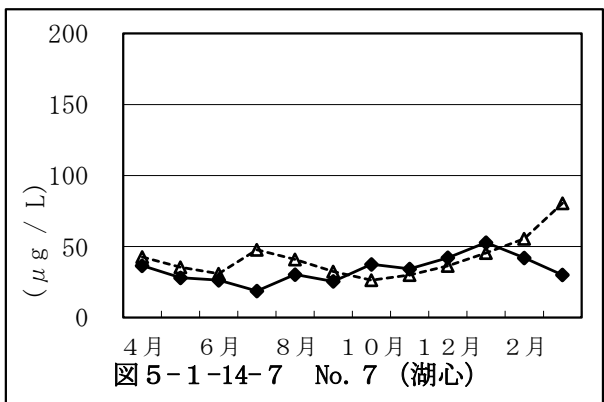
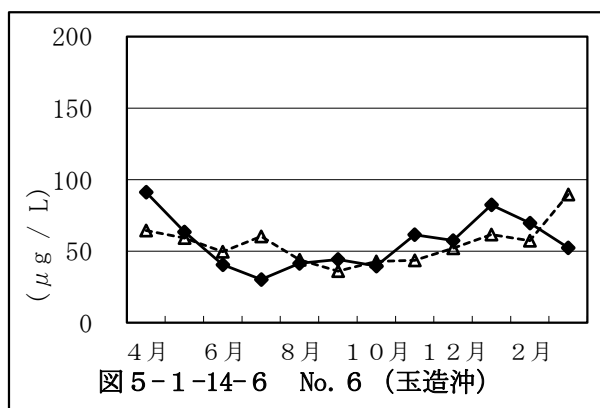
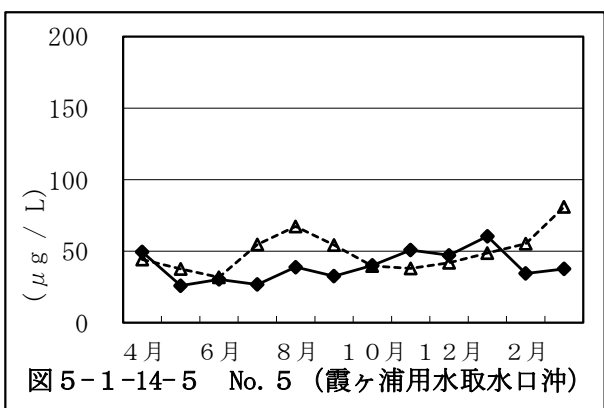
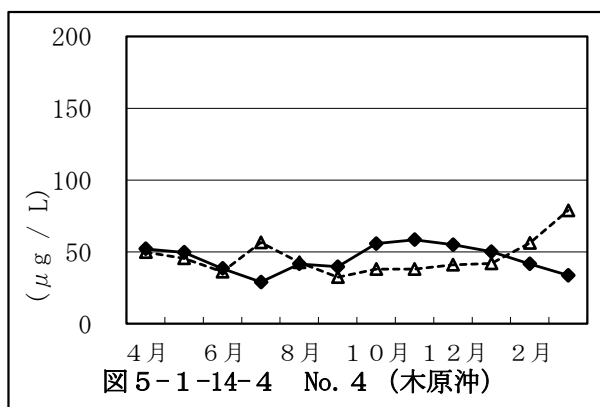
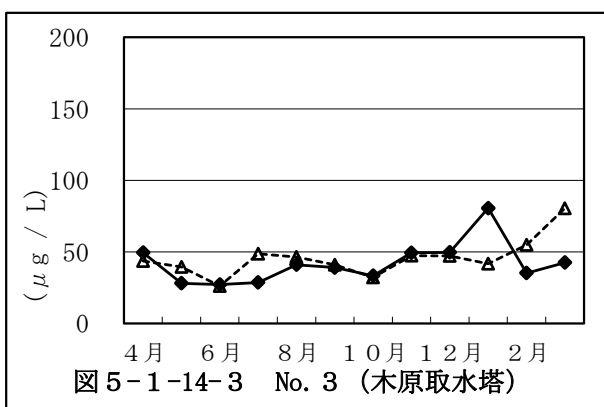
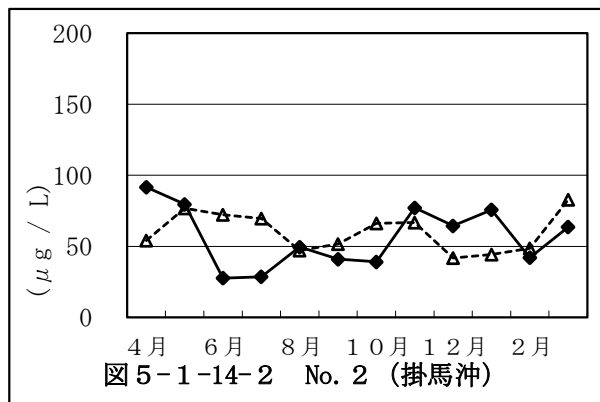
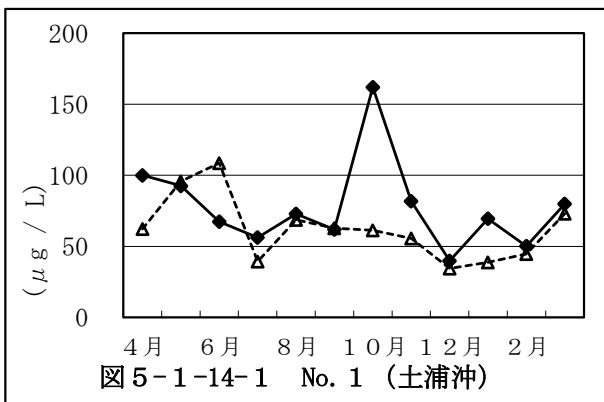
マンガン経月変化（鰐川、外浪逆浦）



注) 定量下限値(0.01 mg/L)未満は、0 mg/Lで表示

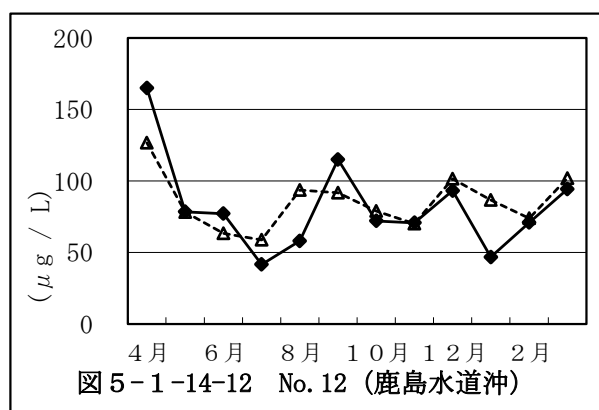
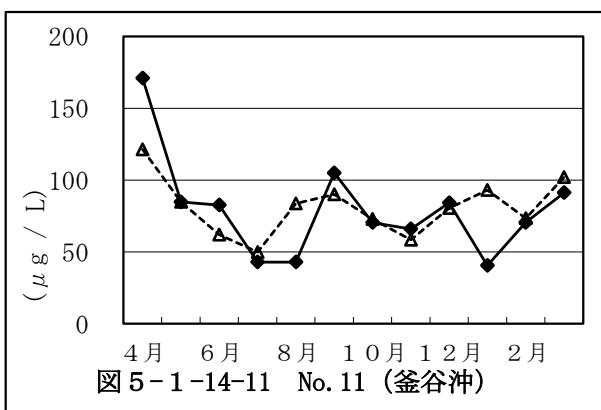
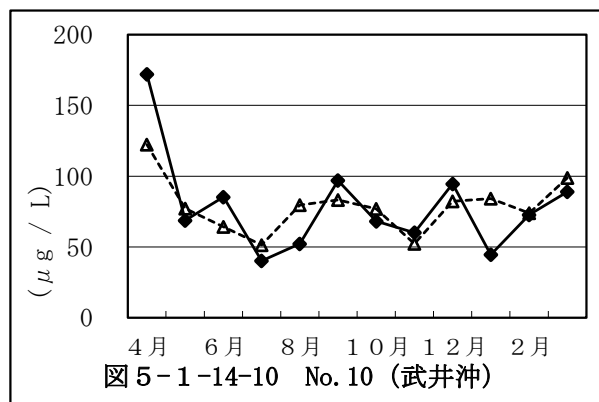
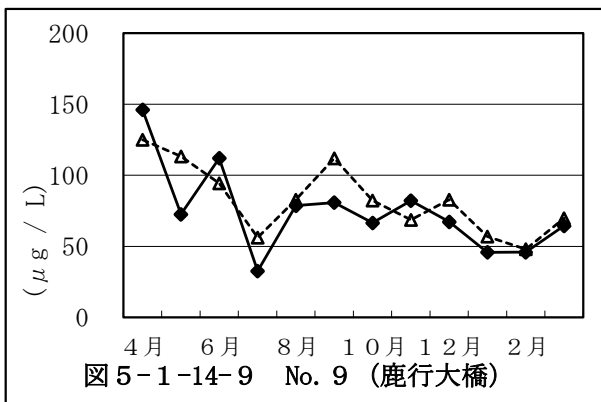
5.1.14 クロロフィルa経月変化 (西浦)

実線：R4年度、点線：過去3年間平均

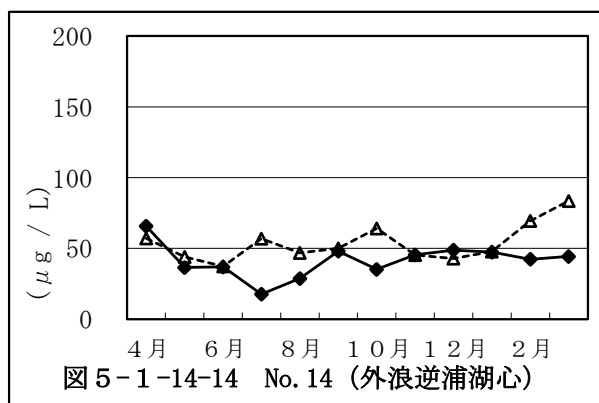
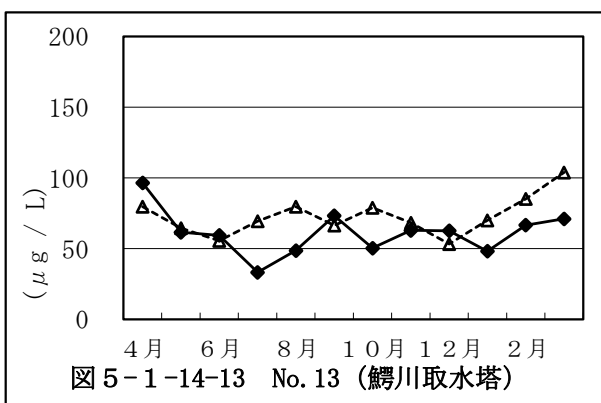


クロロフィルa経月変化（北浦）

実線：R4年度、点線：過去3年間平均

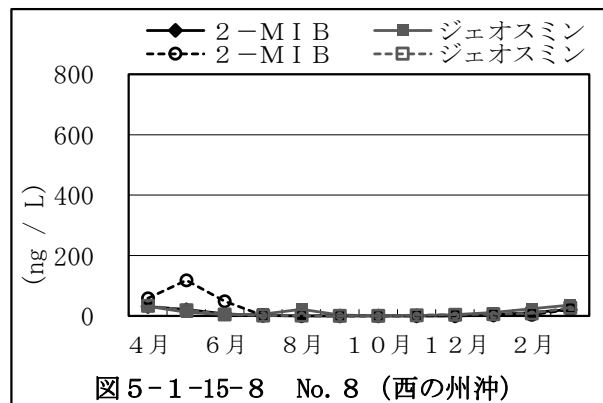
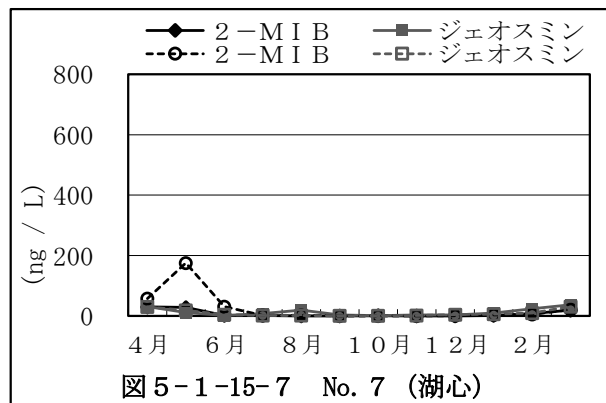
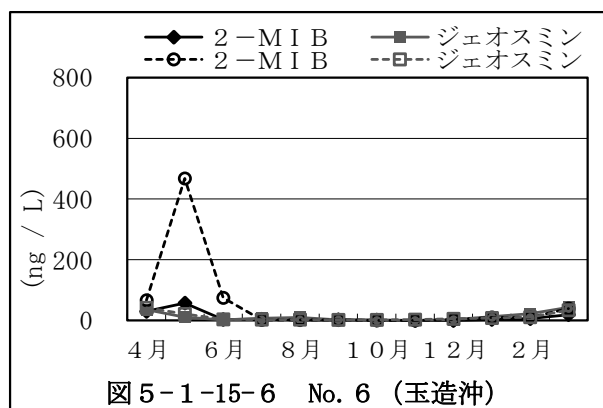
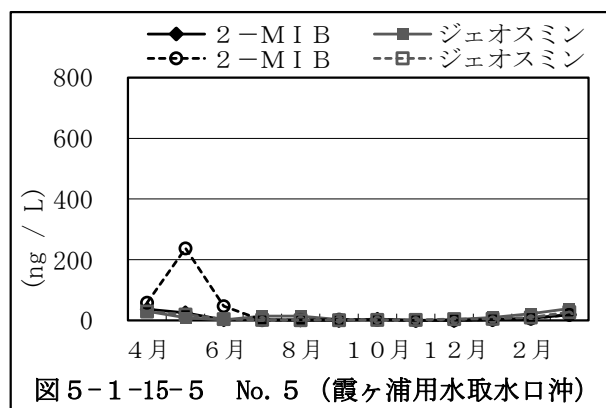
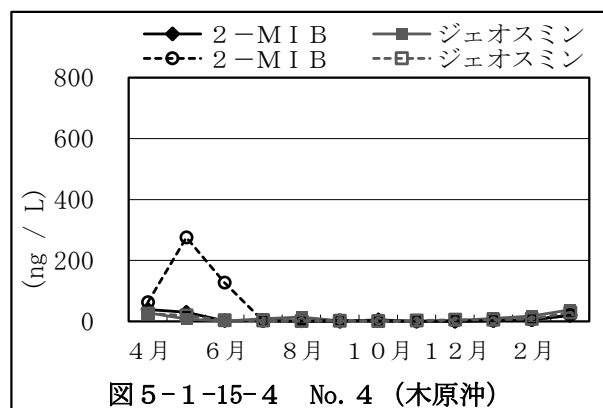
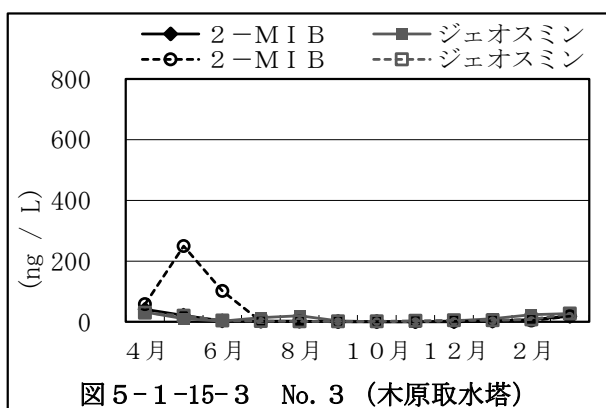
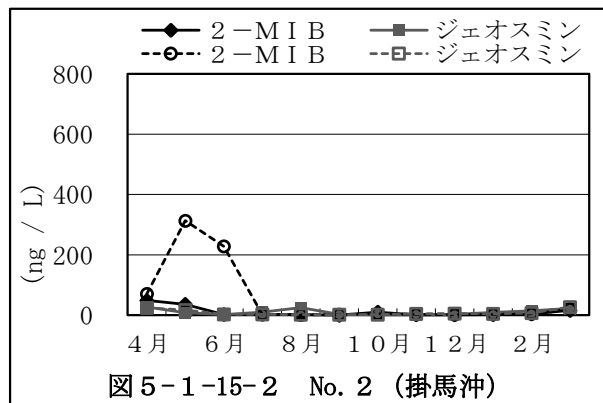
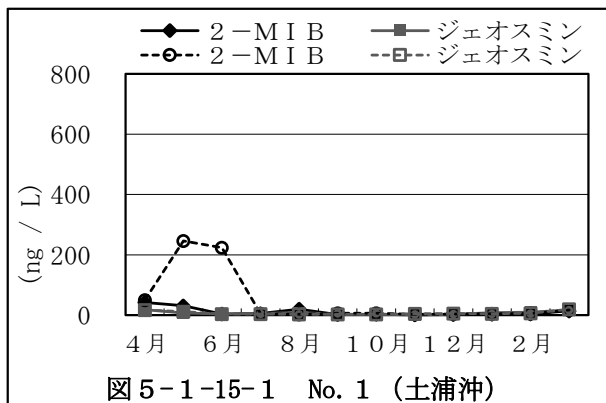


クロロフィルa経月変化（鰐川、外浪逆浦）



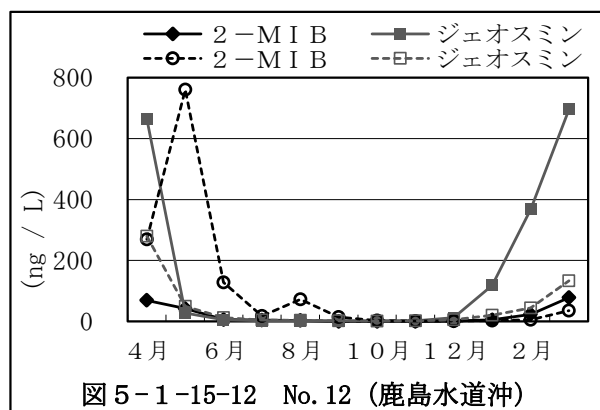
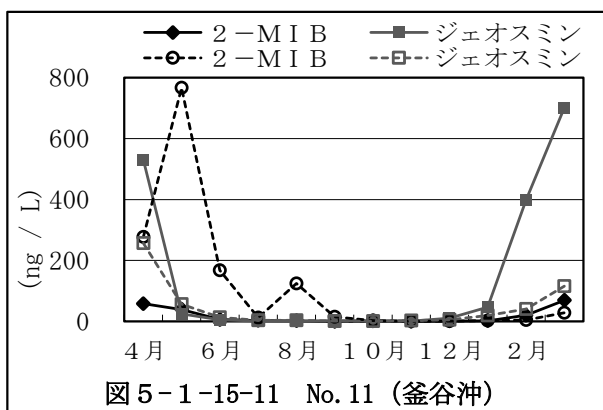
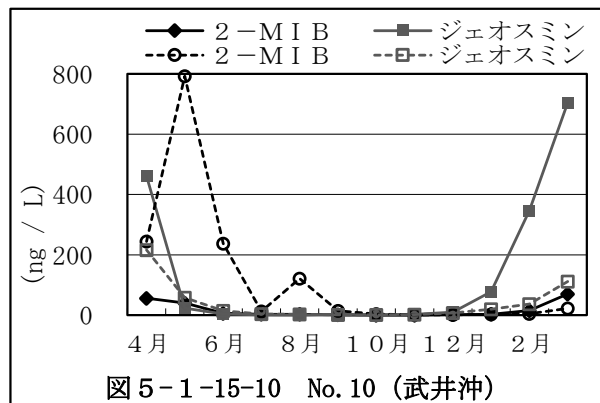
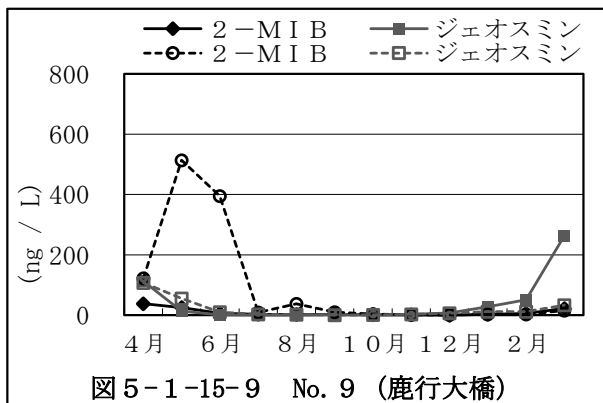
5.1.15 異臭味原因物質経月変化 (西浦)

実線：R4年度、点線：過去3年間平均

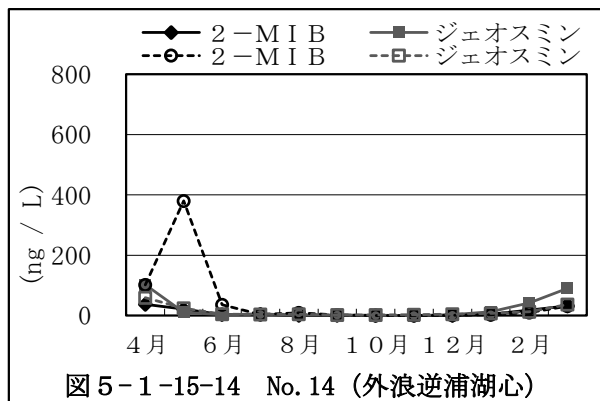
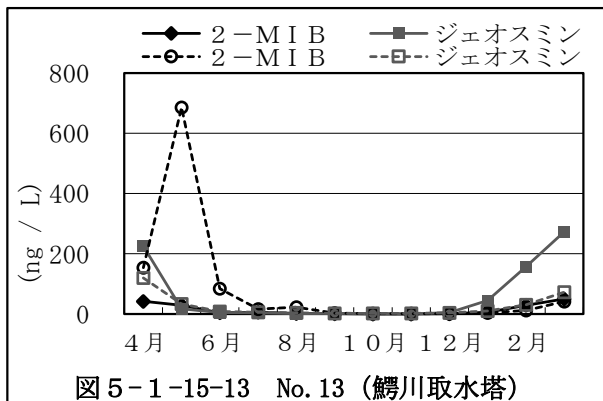


異臭味原因物質経月変化 (北浦)

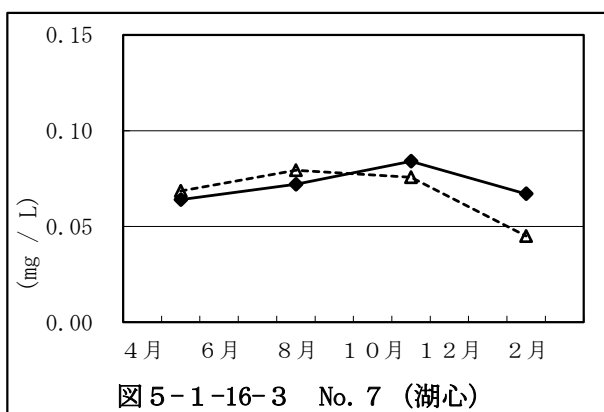
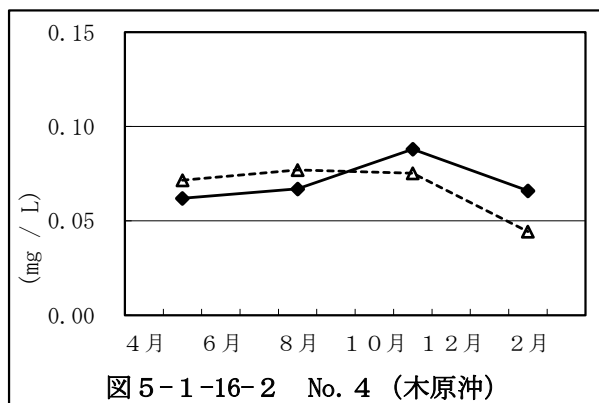
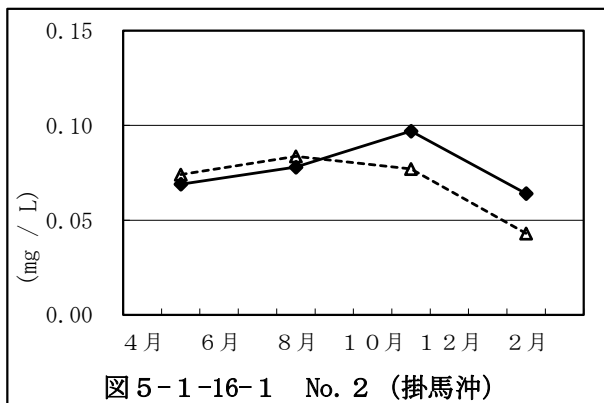
実線：R4年度、点線：過去3年間平均



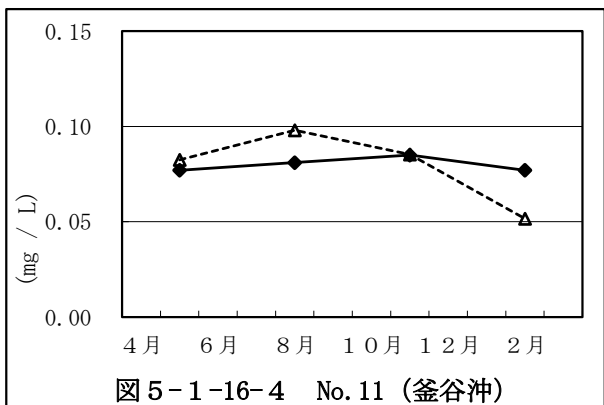
異臭味原因物質経月変化 (鰐川、外浪逆浦)



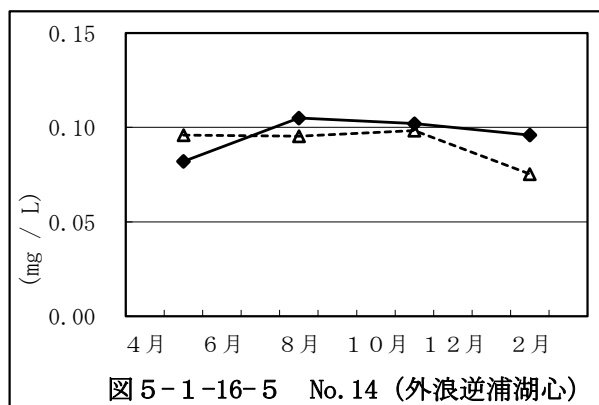
5.1.16 総トリハロメタン生成能 (THMFP) 経月変化 (西浦) 実線: R4年度、点線: 過去3年間平均



(北浦)



(外浪逆浦)

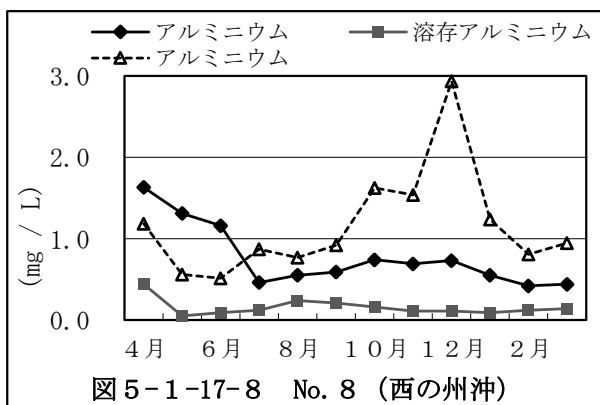
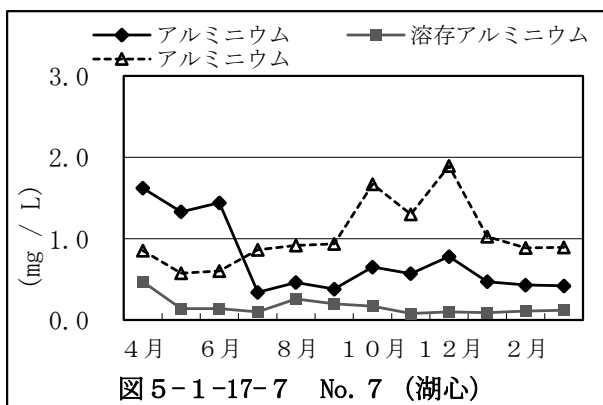
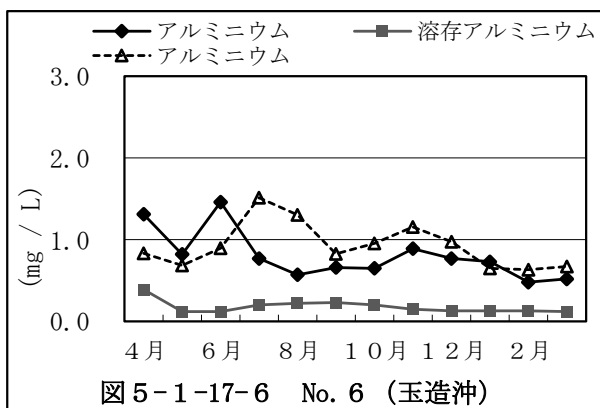
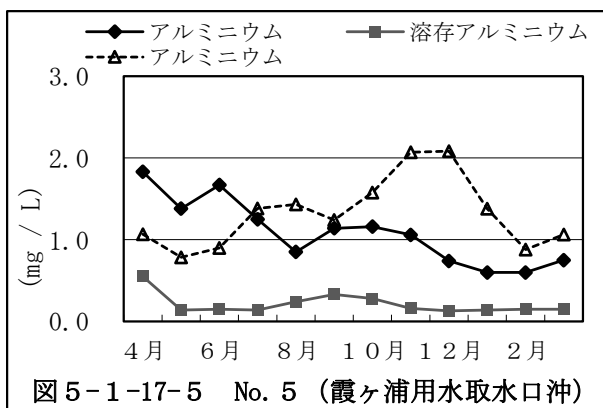
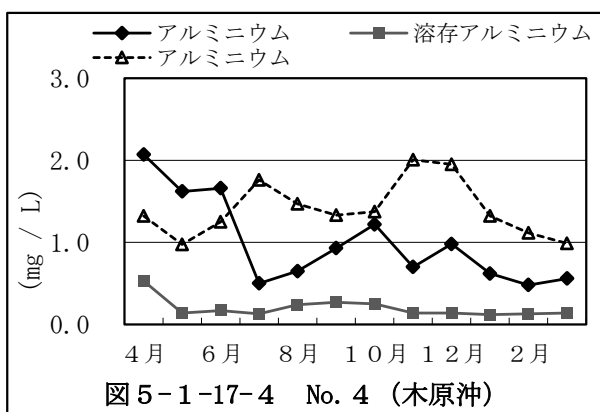
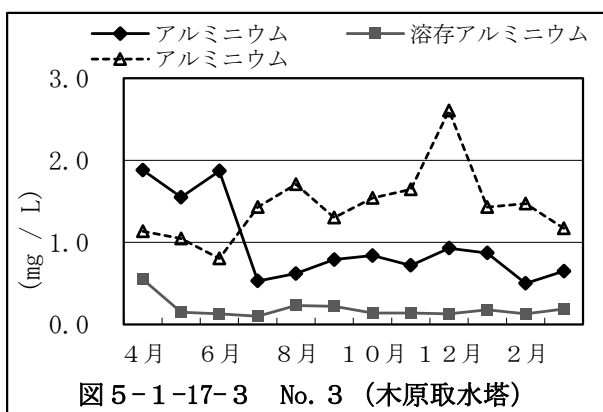
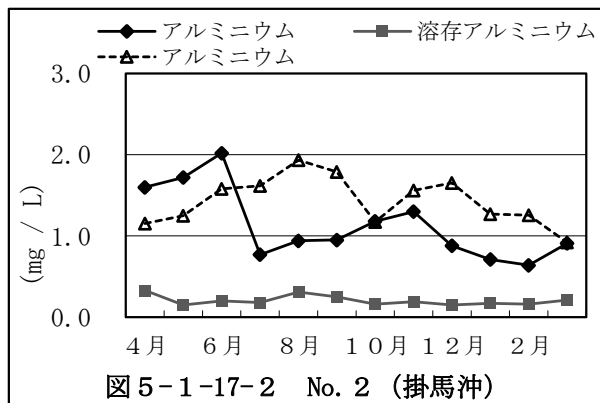
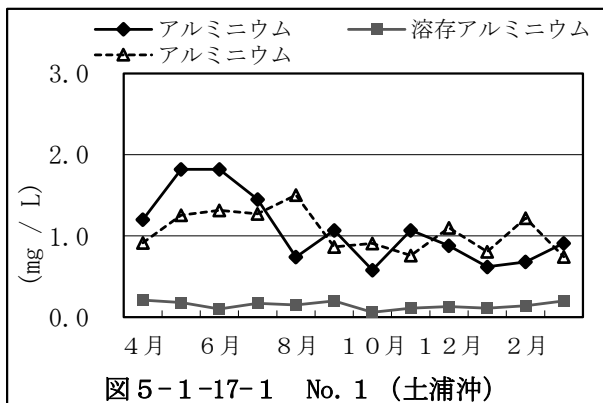




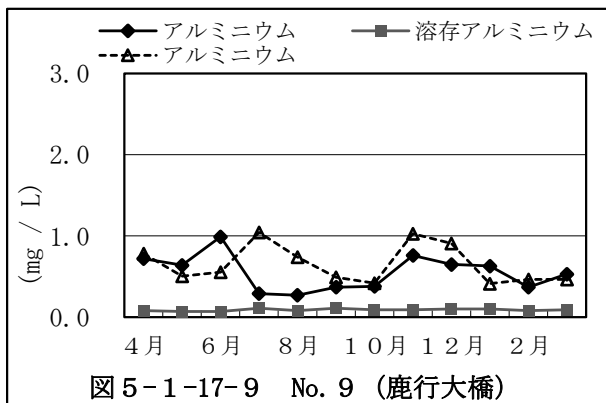


5.1.17 アルミニウム経月変化 (西浦)

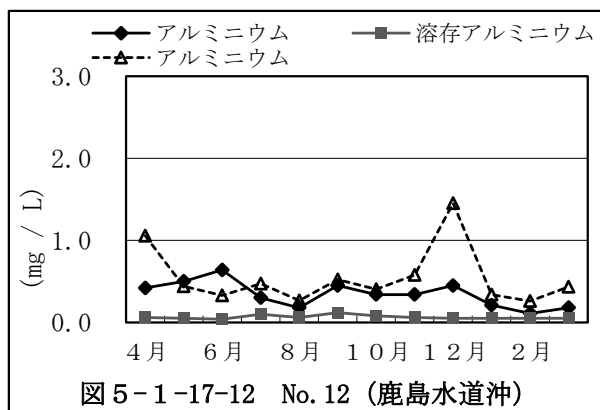
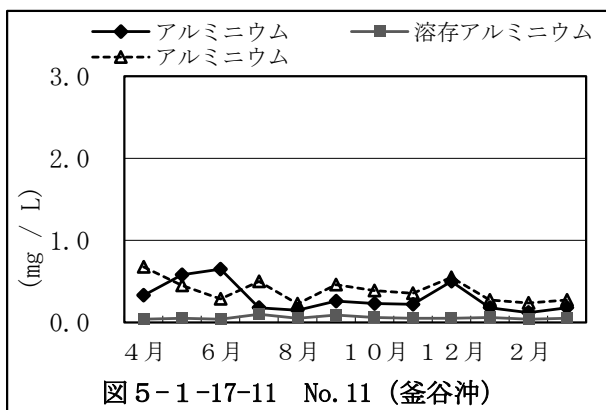
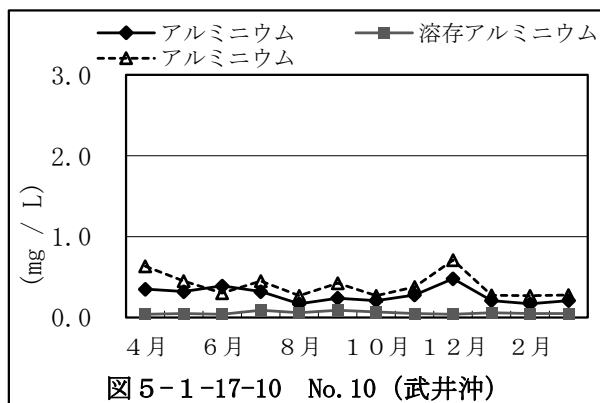
実線：R4年度、点線：過去3年間平均



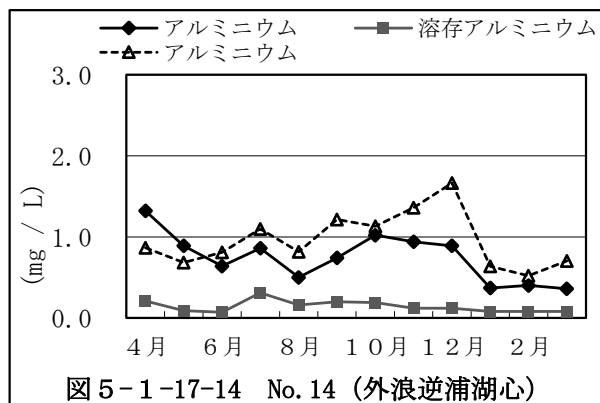
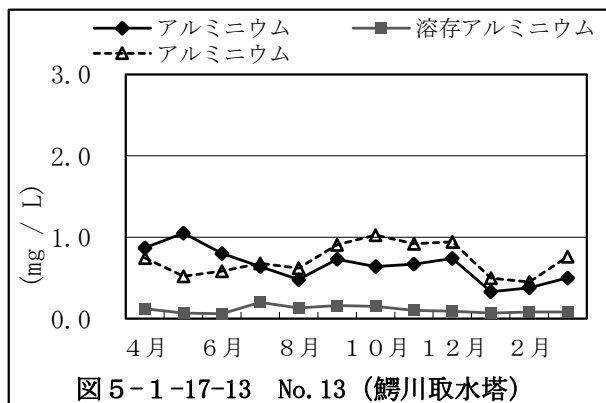
アルミニウム経月変化 (北浦)



実線：R4年度、点線：過去3年間平均

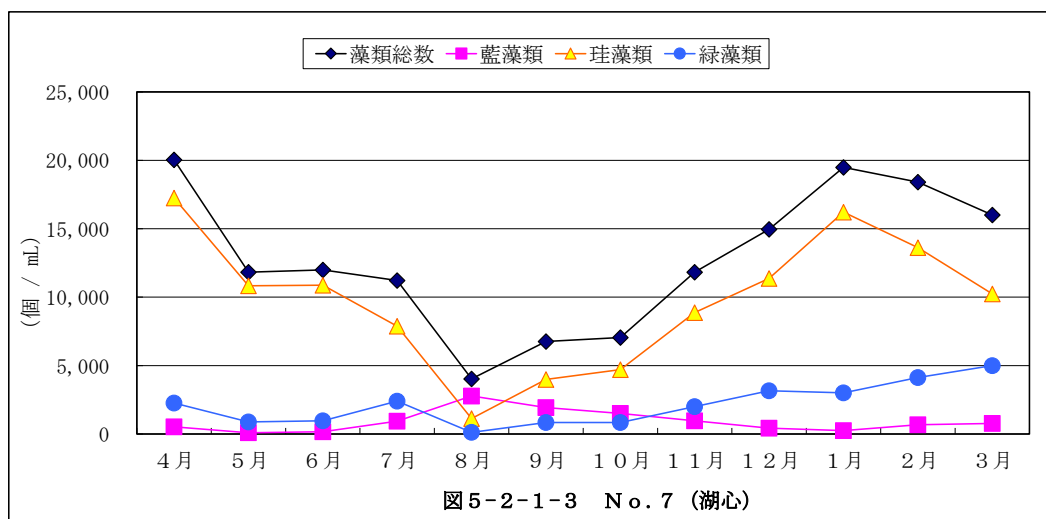
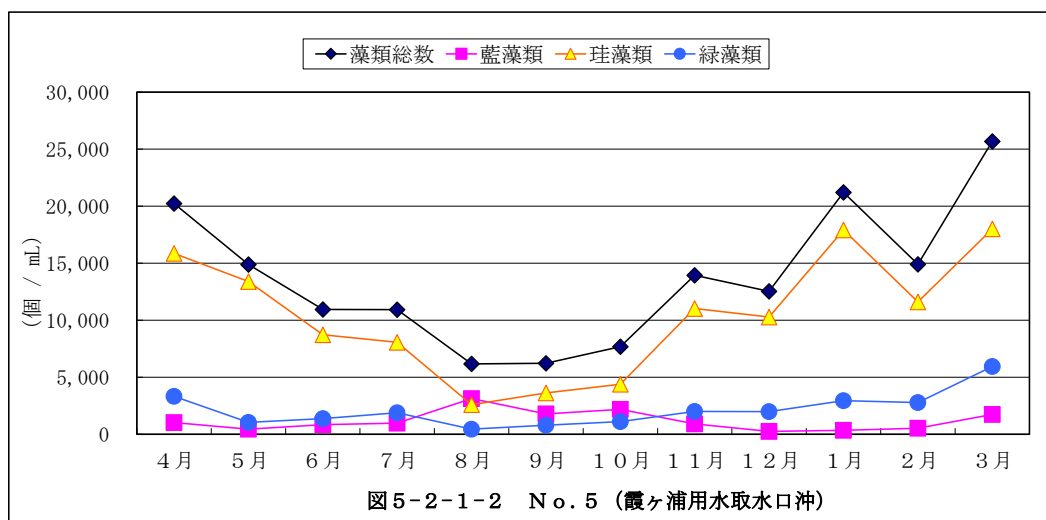
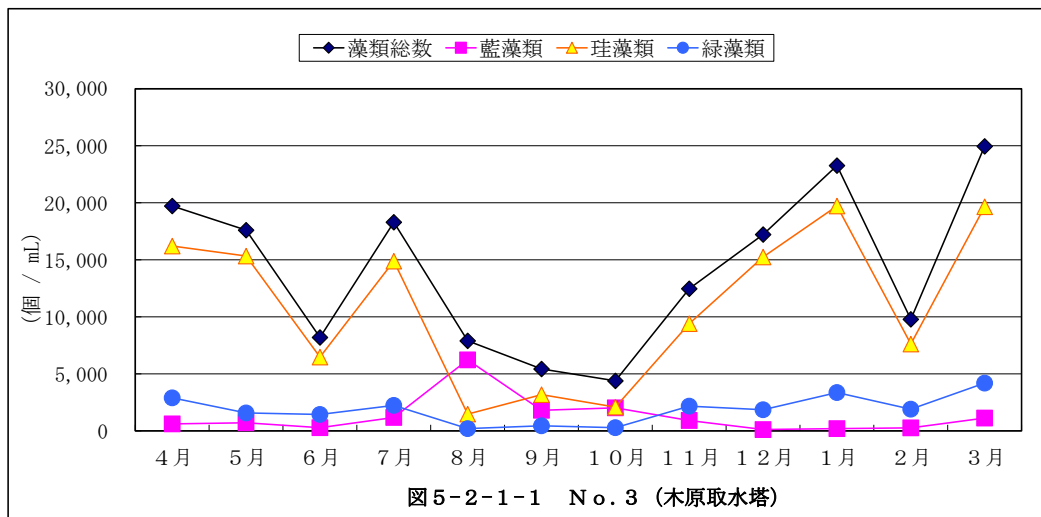


アルミニウム経月変化 (鰐川、外浪逆浦)

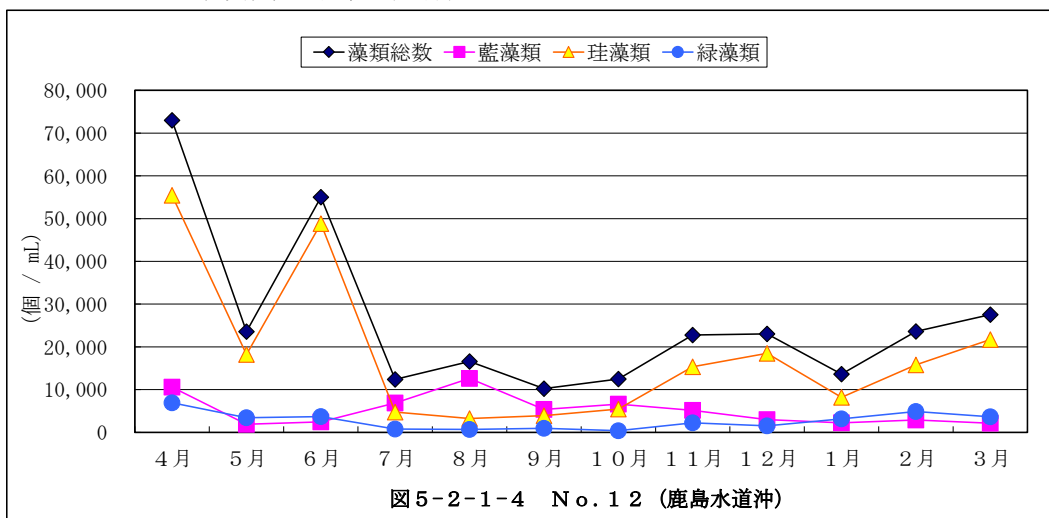


## 5. 2 地点別藻類経月変化

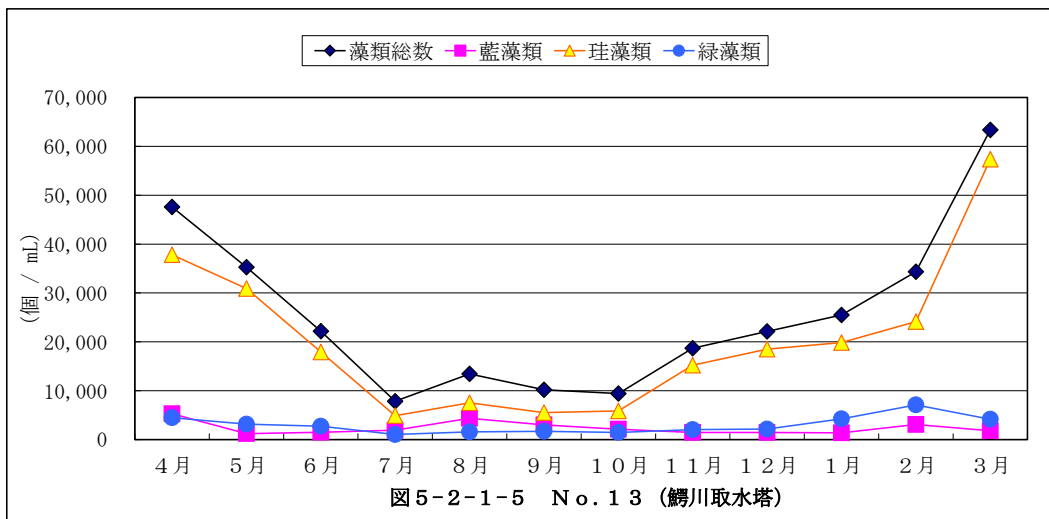
### 5. 2. 1 藻類数経月変化 (西浦)



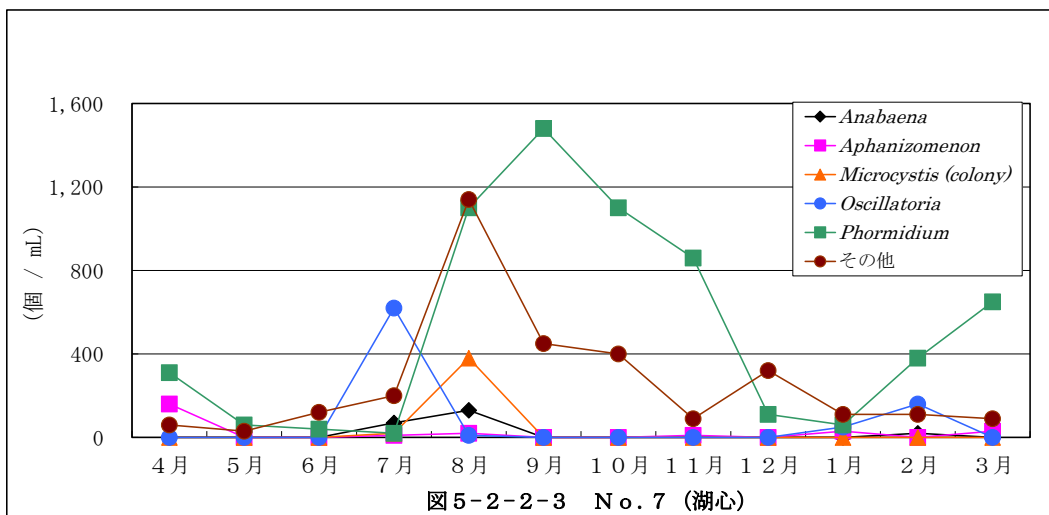
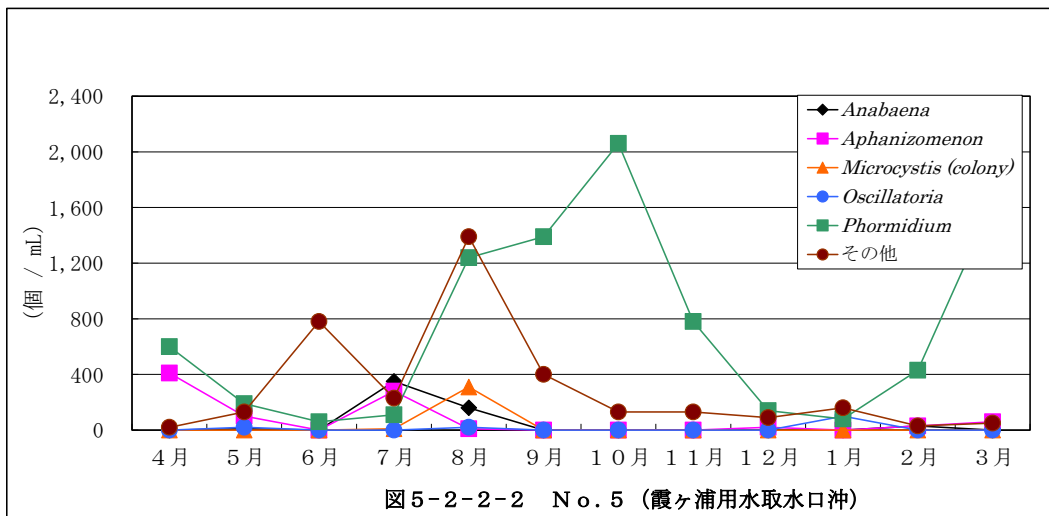
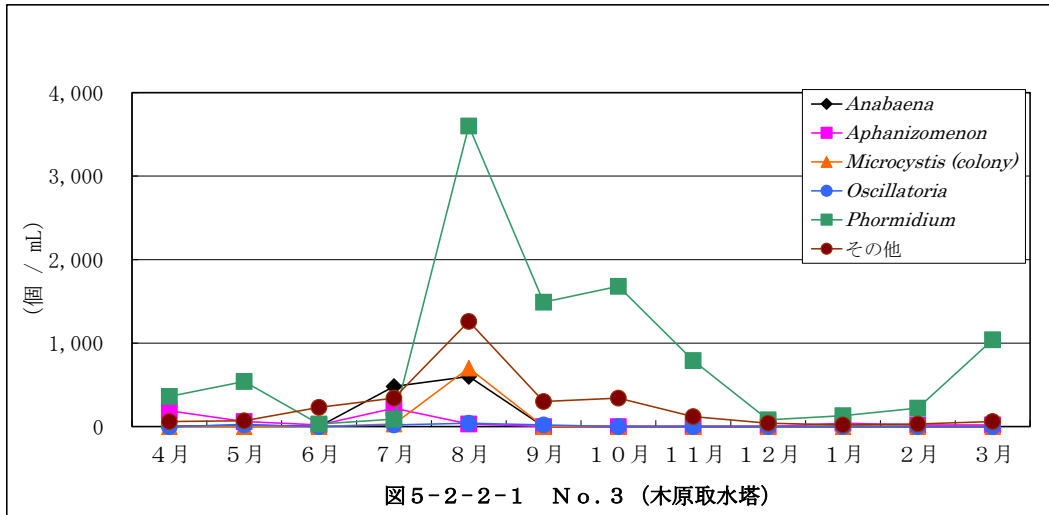
藻類数経月变化（北浦）



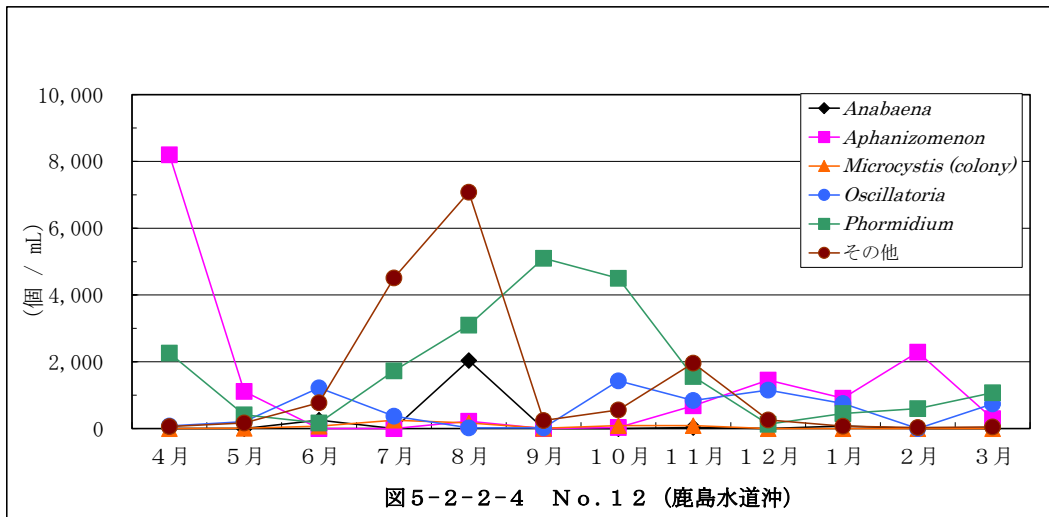
藻類数経月变化（鰐川）



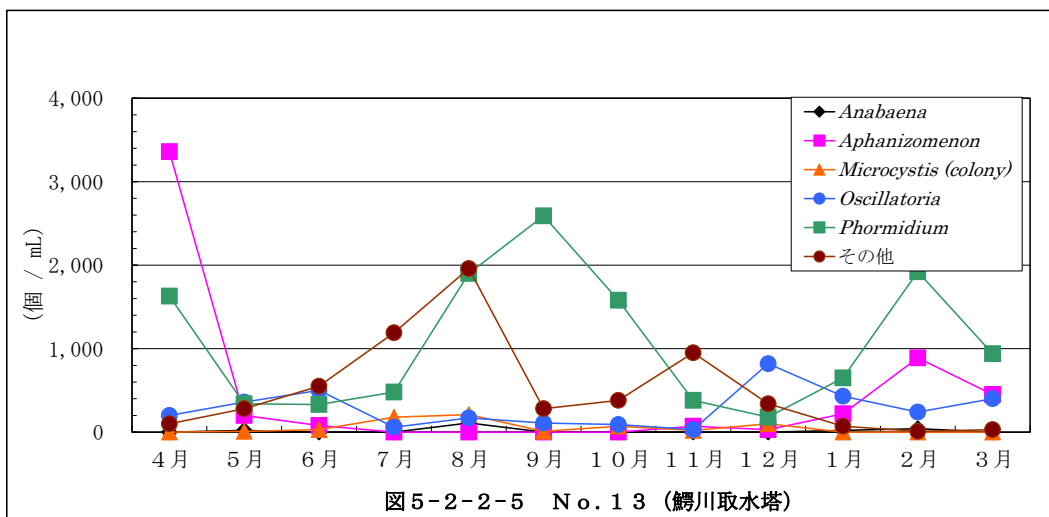
5. 2. 2 藍藻類経月変化 (西浦)



藍藻類経月変化（北浦）

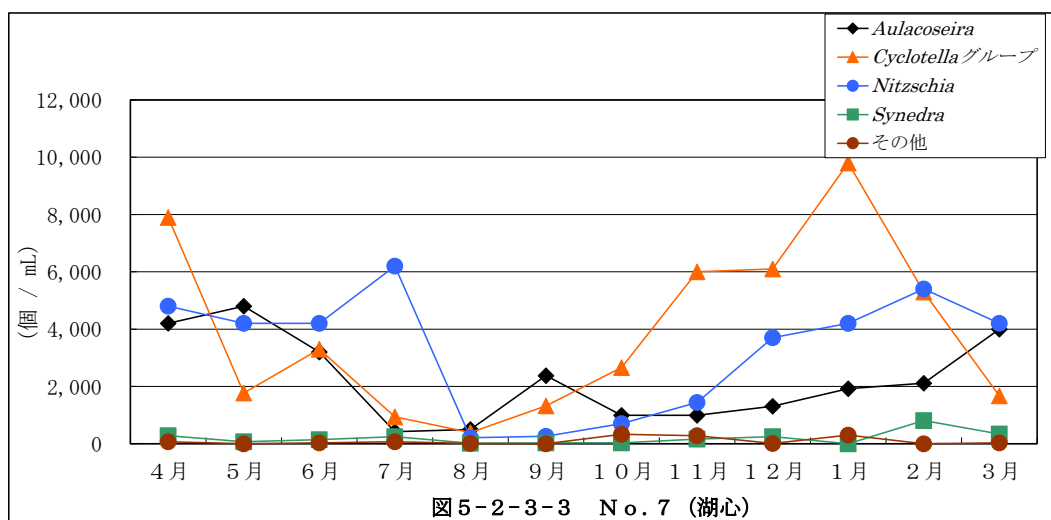
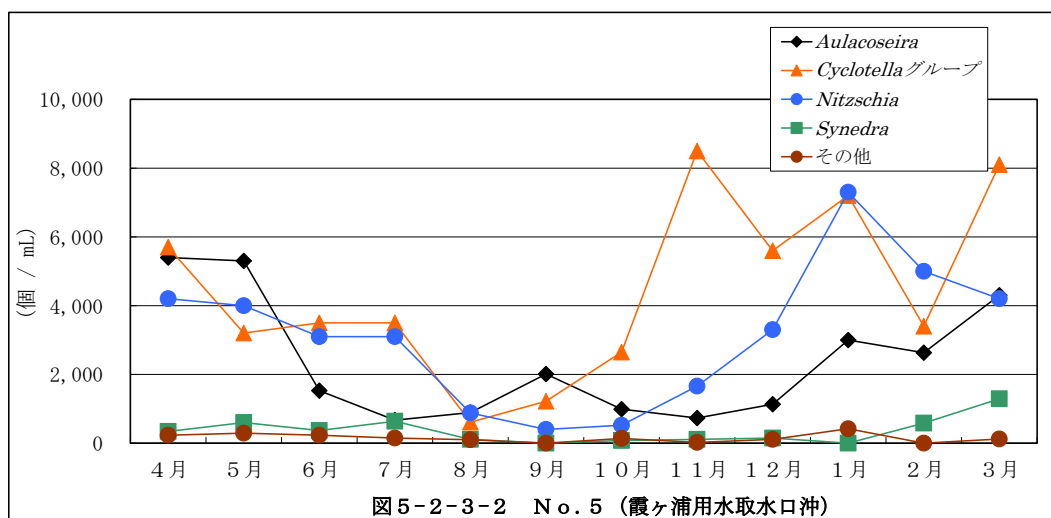
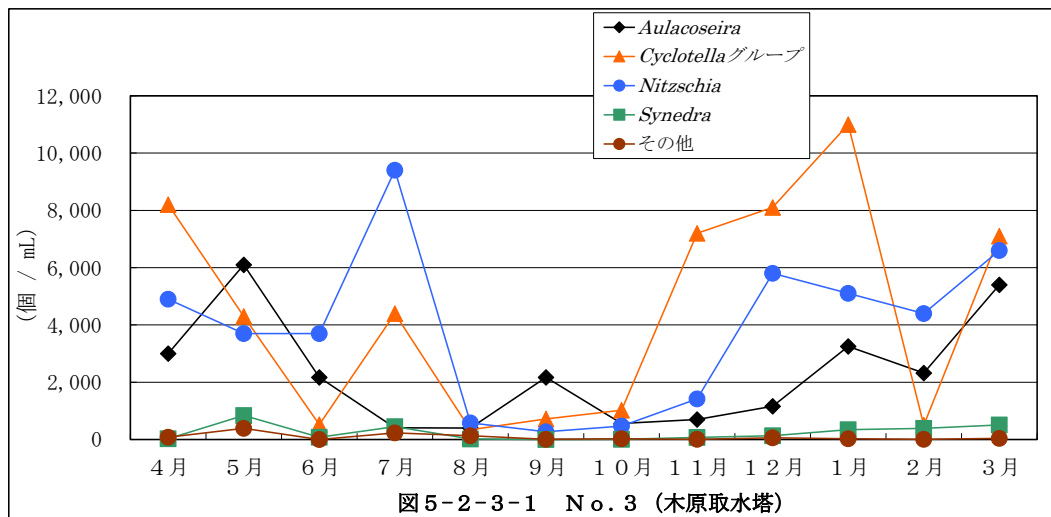


藍藻類経月変化（鰐川）

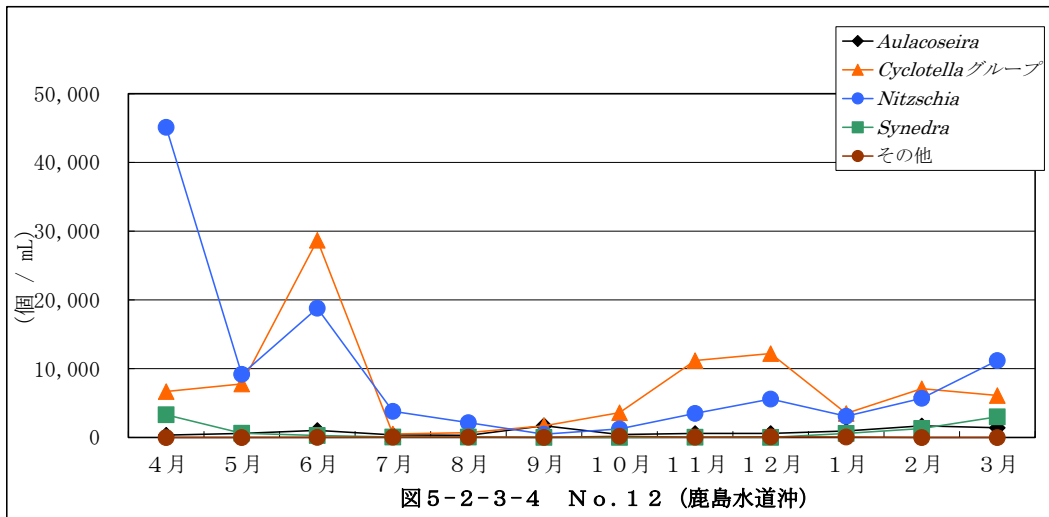


注1) その他はAnabaena、Aphanizomenon、Microcystis(colony)、Oscillatoria、Phormidiumを除く全ての藍藻類を示す

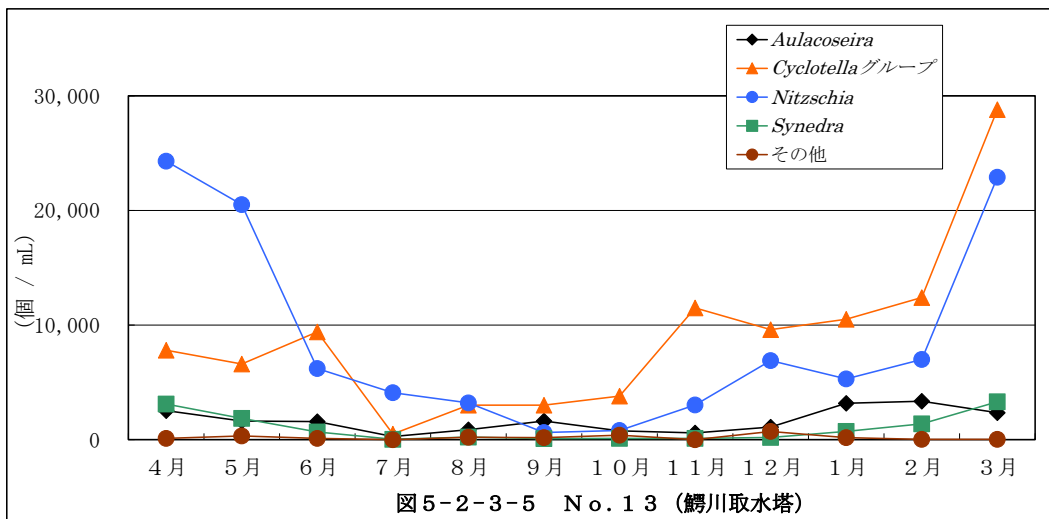
5. 2. 3 珪藻類経月変化 (西浦)



珪藻類経月変化（北浦）



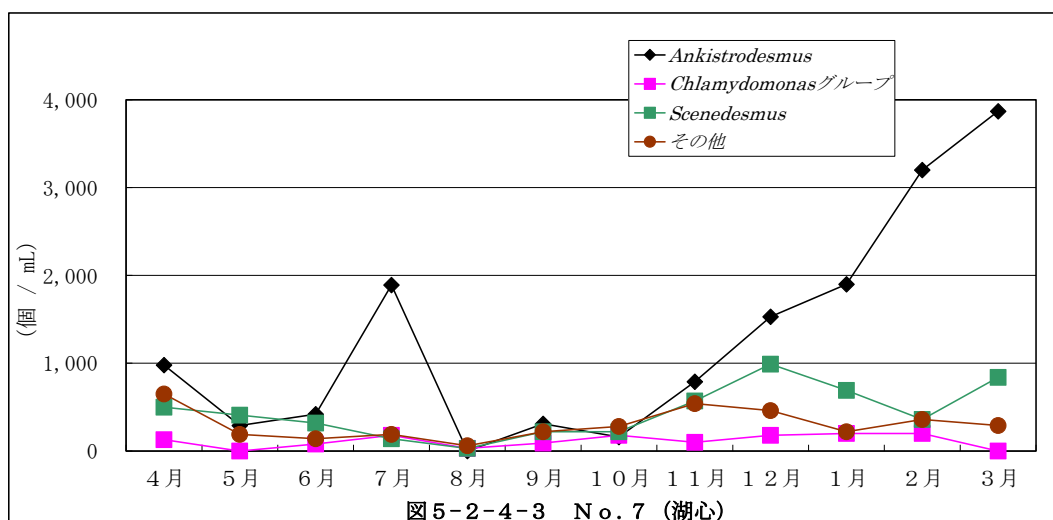
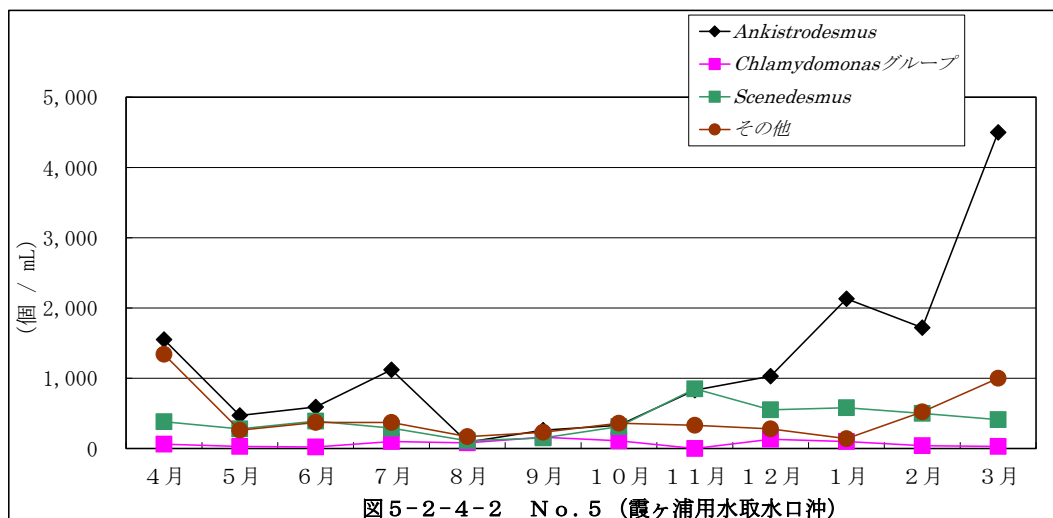
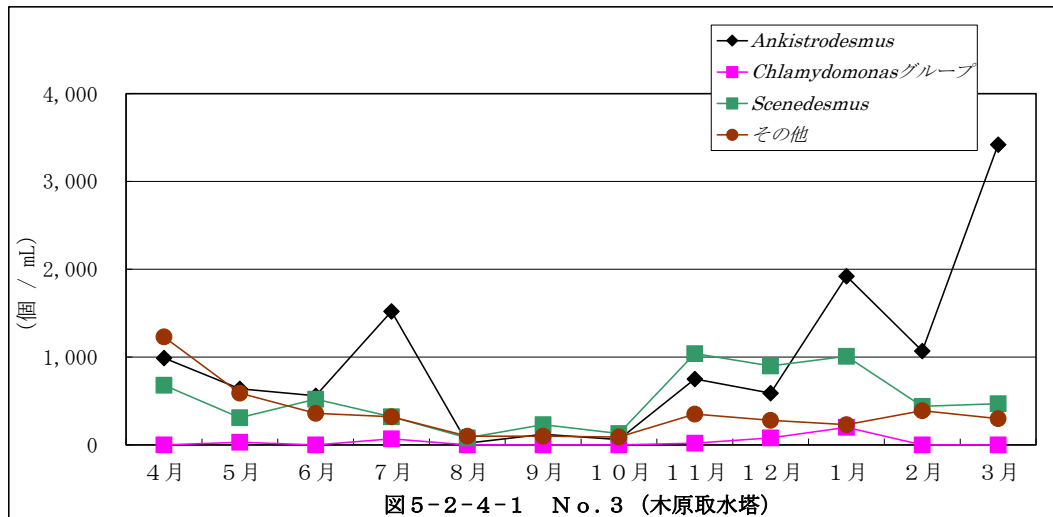
珪藻類経月変化（鱒川）



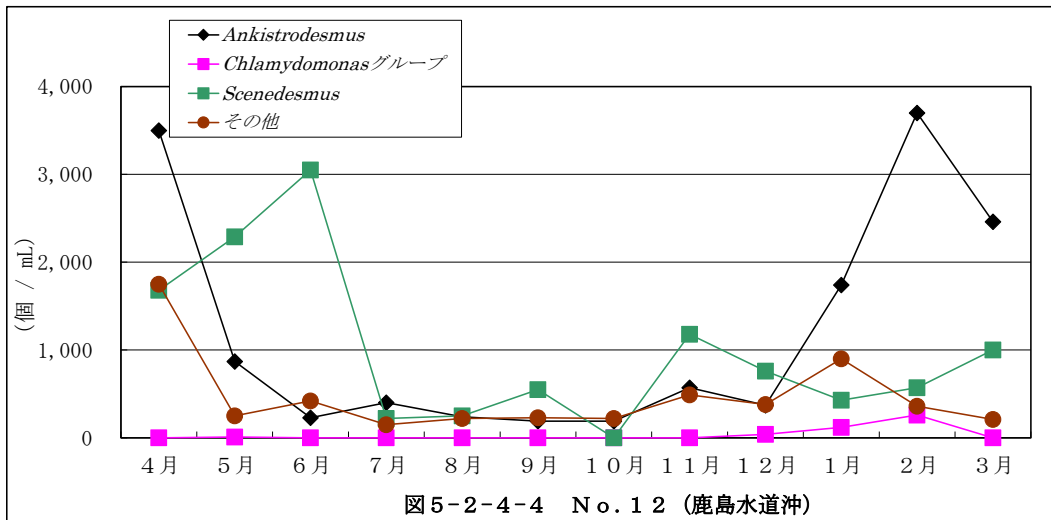
注1) その他はAulacoseira、Cyclotellaグループ、Nitzschia、Synedraを除く全ての珪藻類を示す



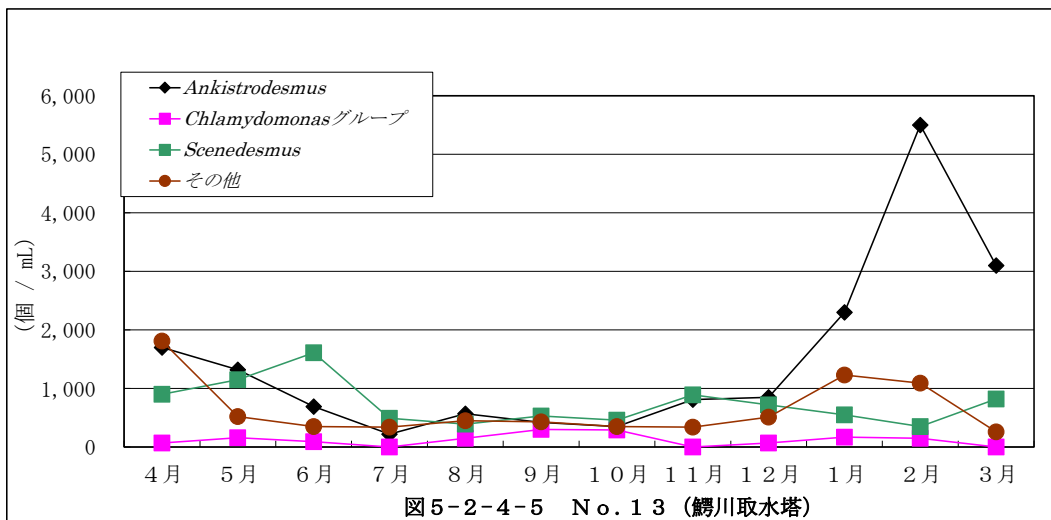
5. 2. 4 緑藻類経月変化 (西浦)



緑藻類経月変化（北浦）



緑藻類経月変化（鱒川）



注1) その他はAnkistrodesmus、Chlamydomonas グループ、Scenedesmusを除く全ての緑藻類を示す