

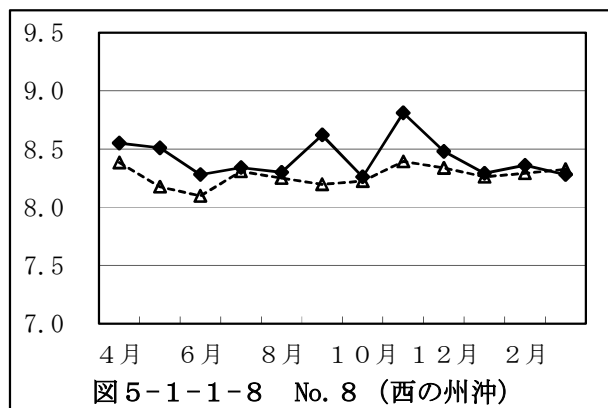
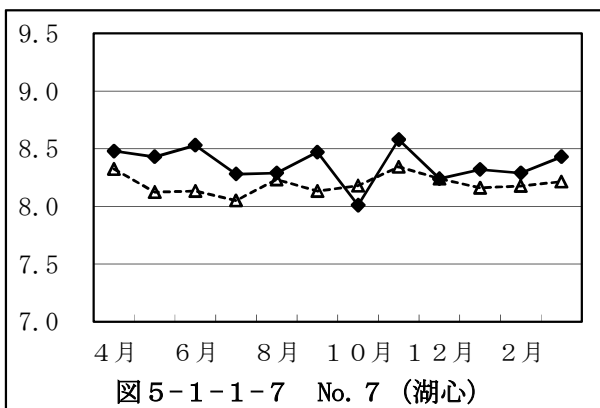
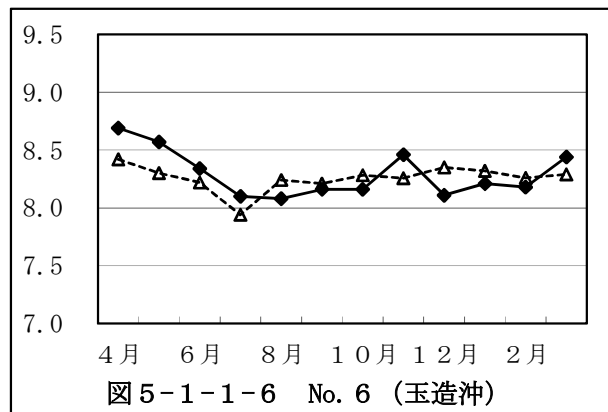
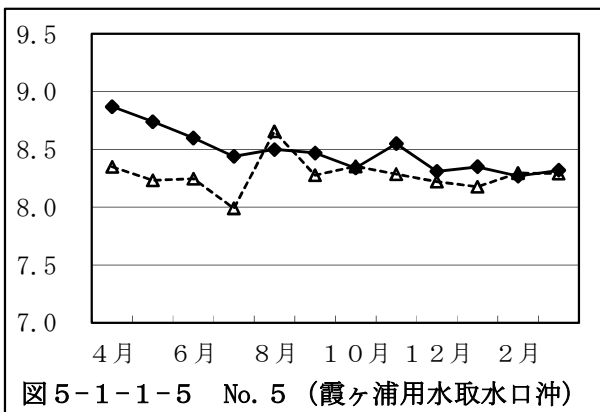
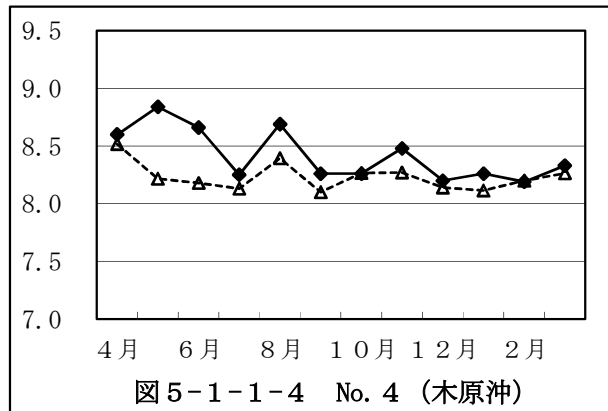
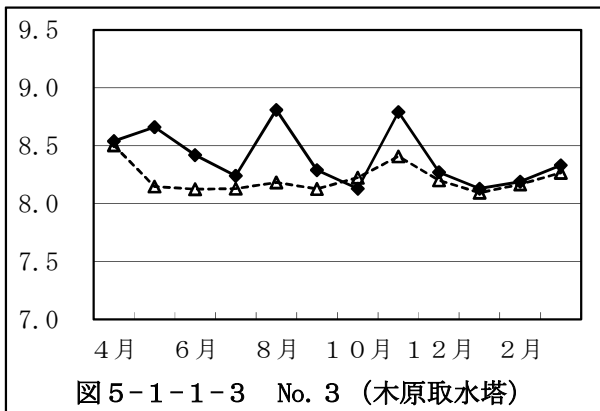
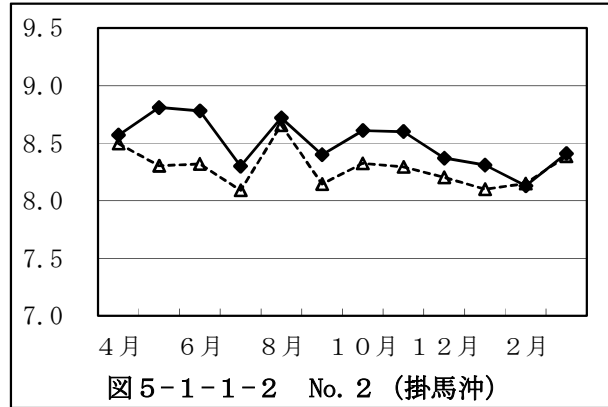
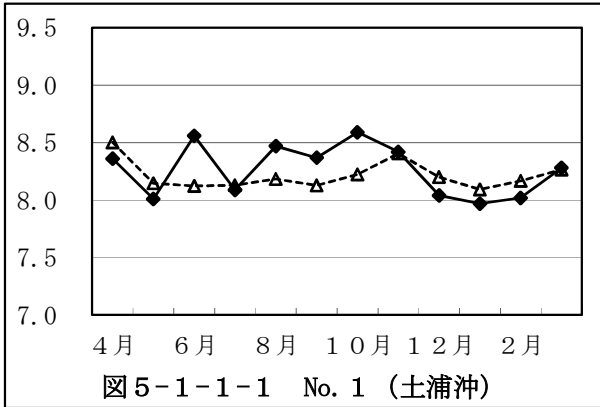
## 5 調査結果グラフ

### 5.1 地点別水質経月変化

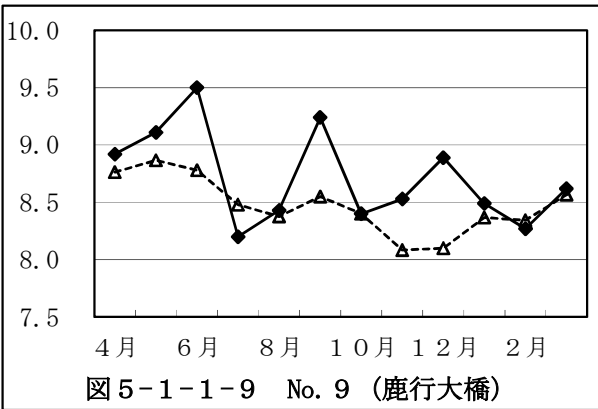
#### 5.1.1 pH経月変化（西浦）

(平成29～31年度)

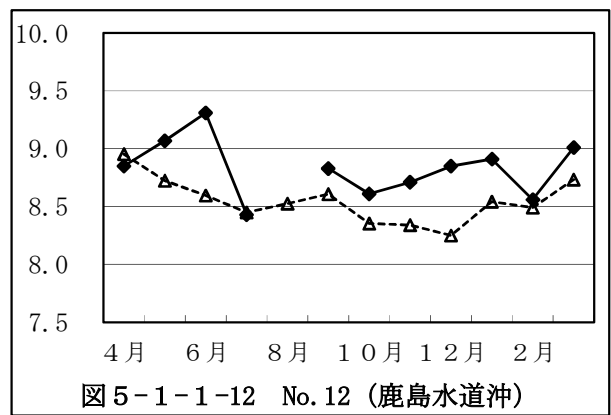
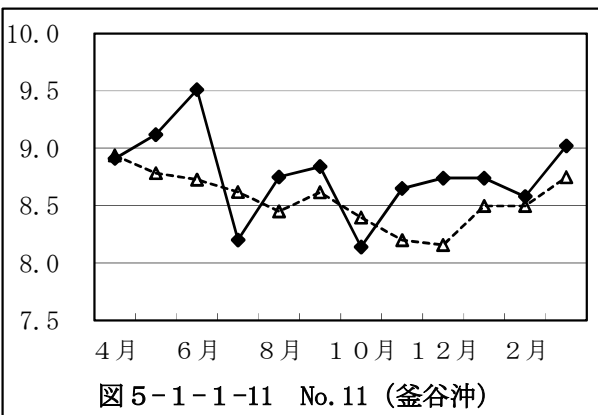
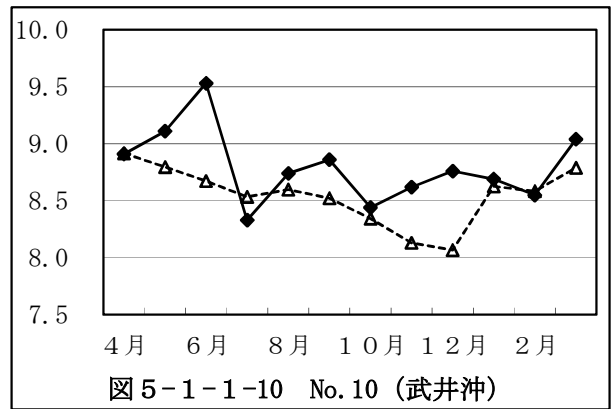
実線：R2年度、点線：過去3年間平均



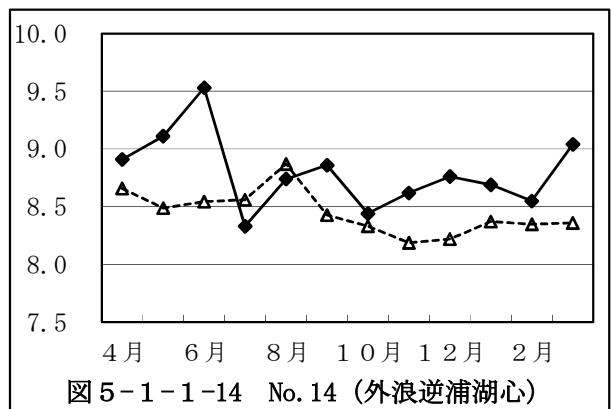
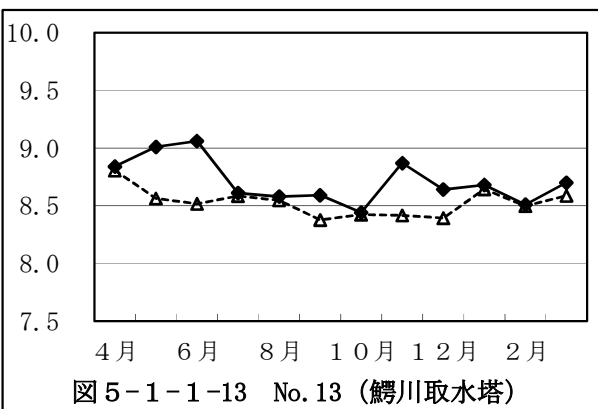
pH経月変化（北浦）



実線：R2年度、点線：過去3年間平均



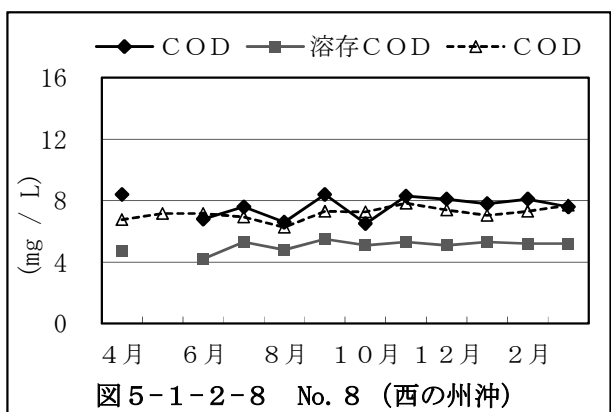
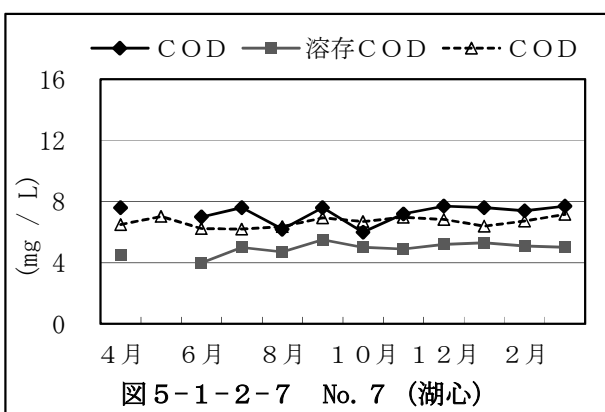
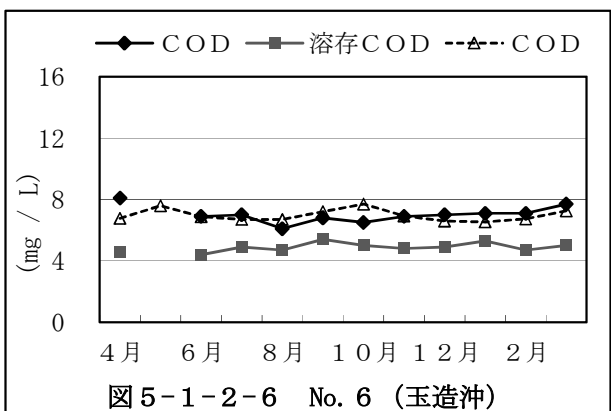
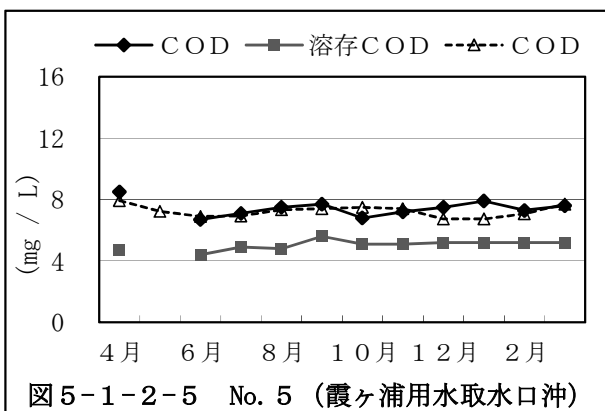
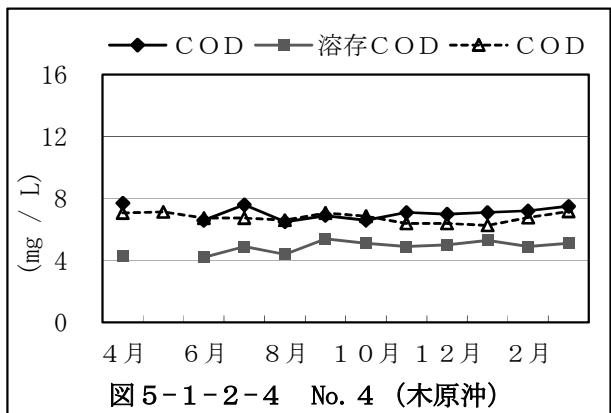
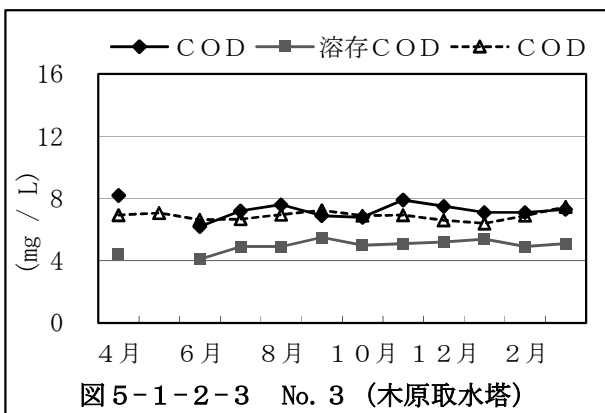
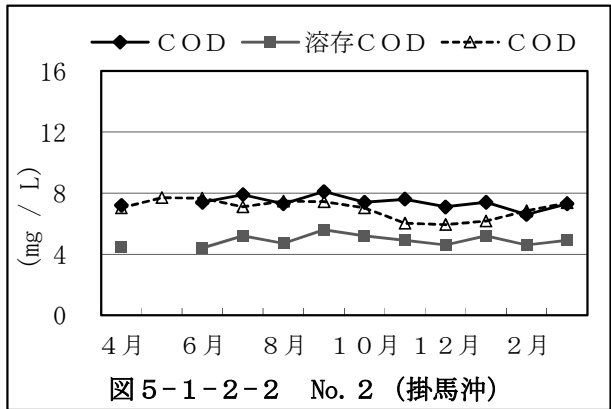
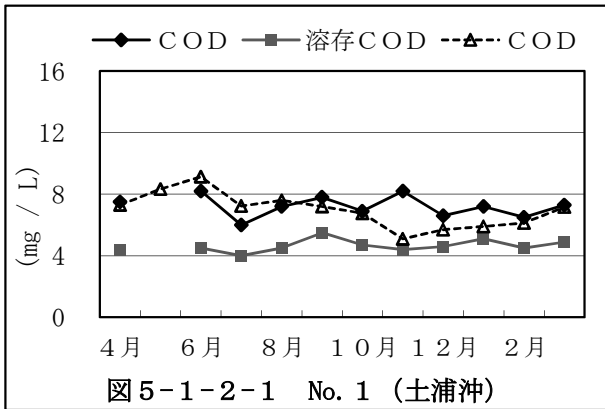
pH経月変化（鰐川、外浪逆浦）



注) No. 12の8月のpH値は欠測

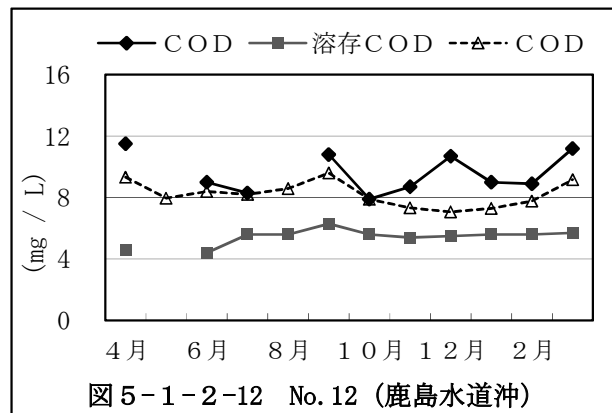
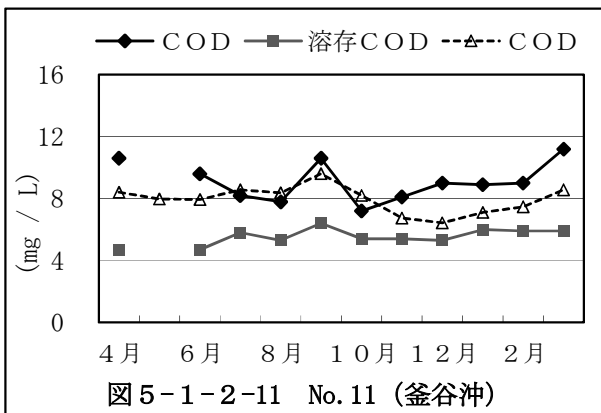
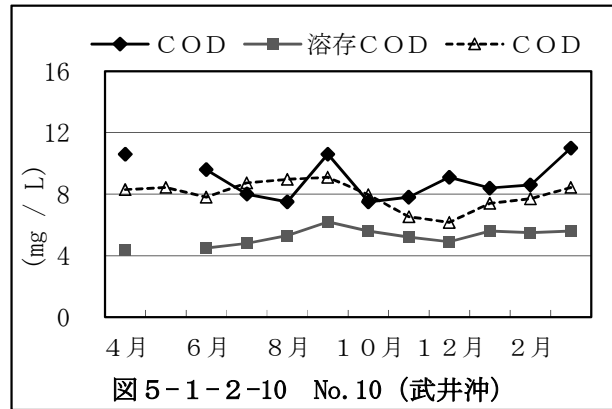
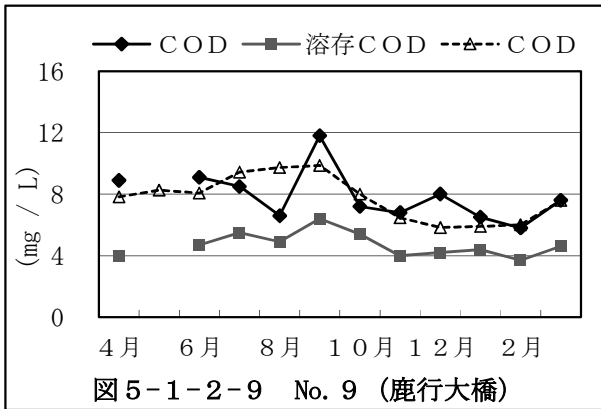
5.1.2 COD経月変化（西浦）

実線：R2年度、点線：過去3年間平均

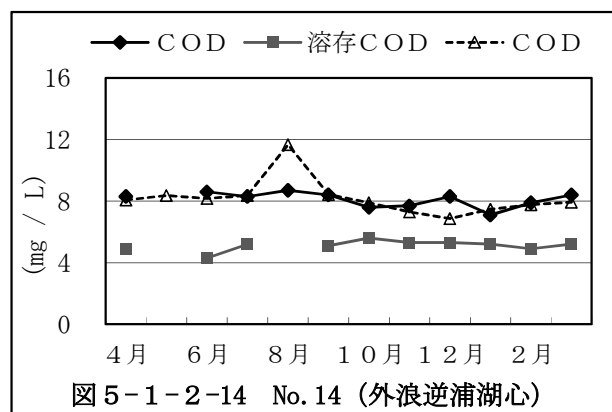
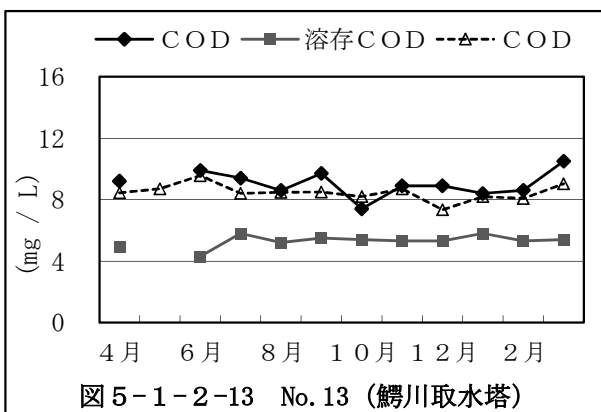


COD経月変化（北浦）

実線：R2年度、点線：過去3年間平均



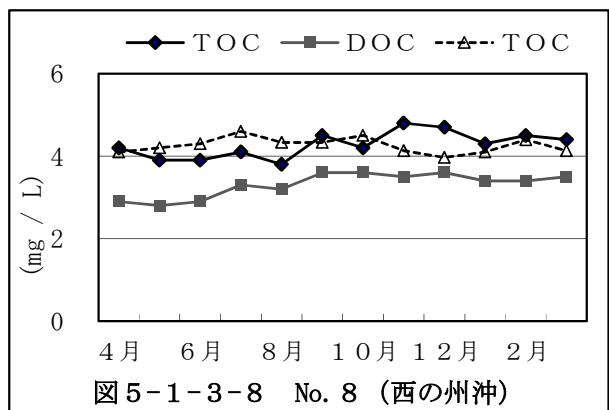
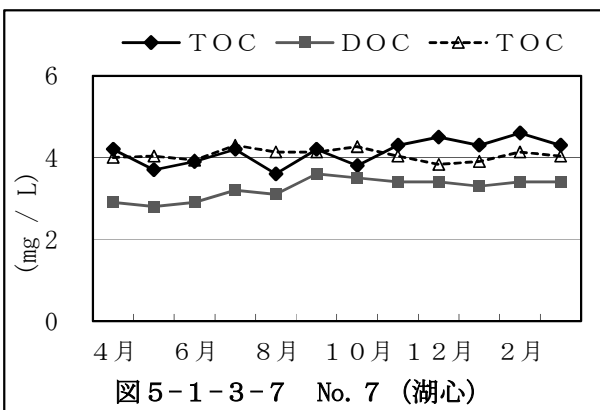
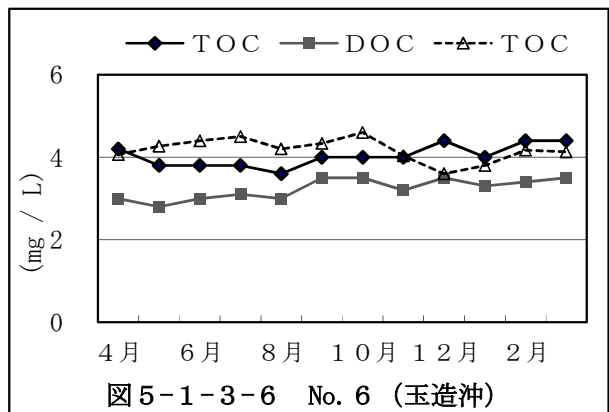
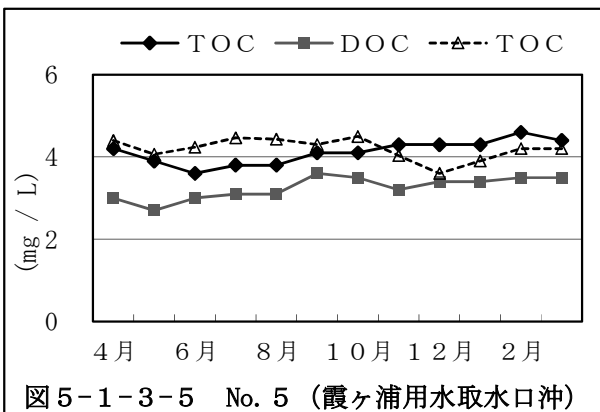
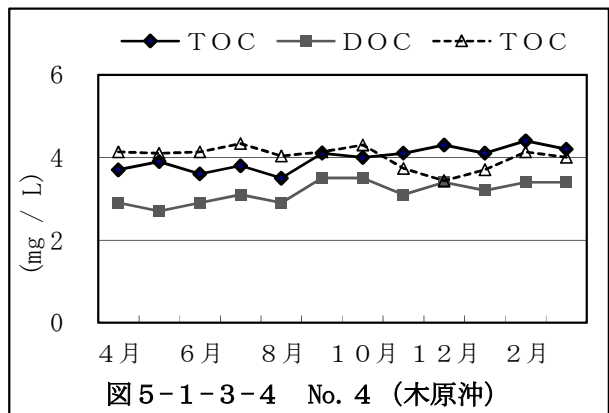
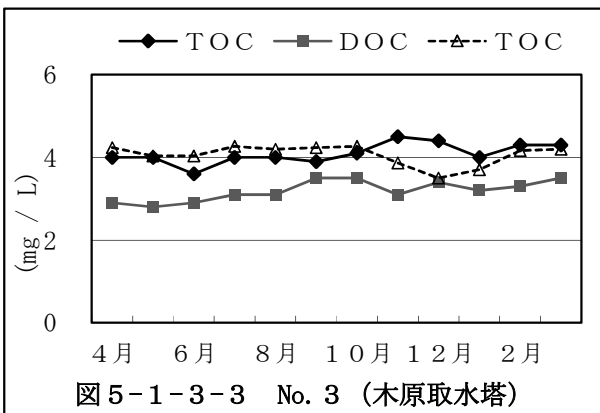
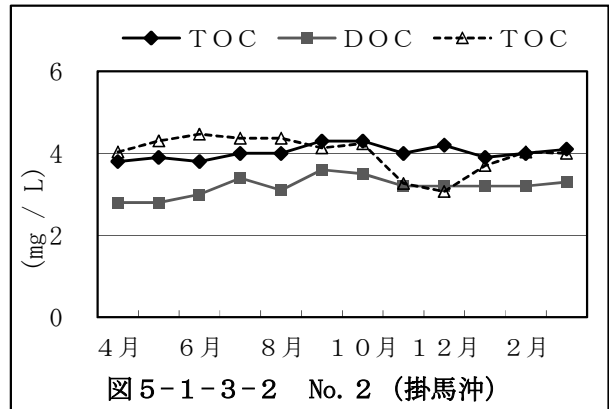
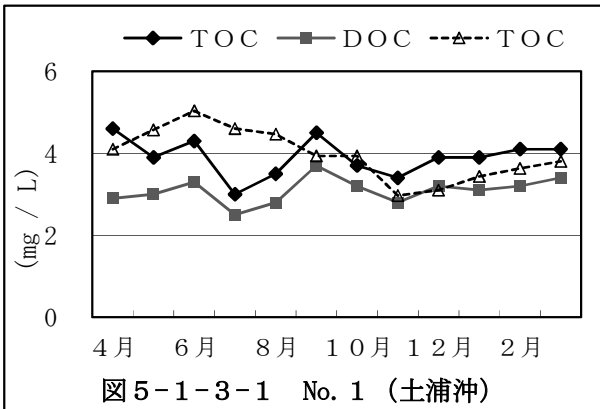
COD経月変化（鰐川、外浪逆浦）



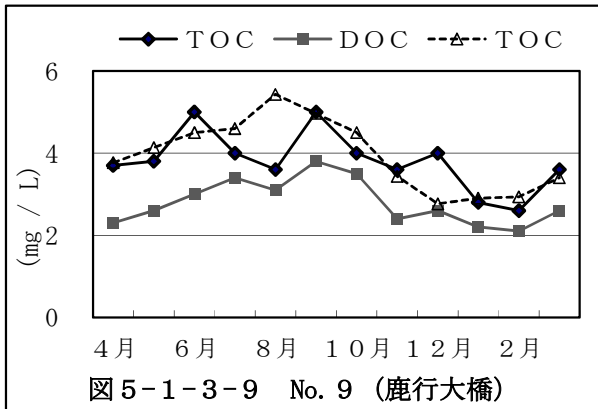
注) 5月は欠測  
 注) No. 12の8月のCOD及びNo. 14の8月の溶存CODは欠測

5.1.3 TOC経月変化（西浦）

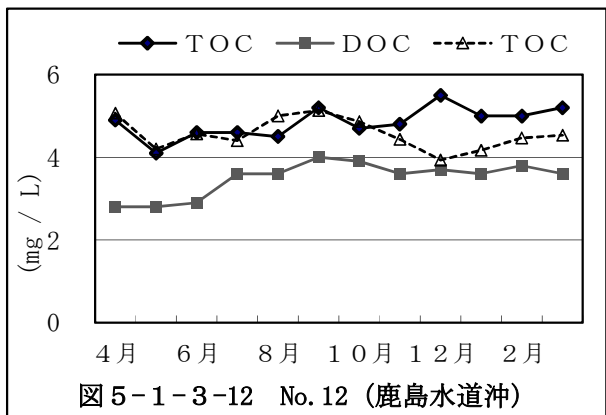
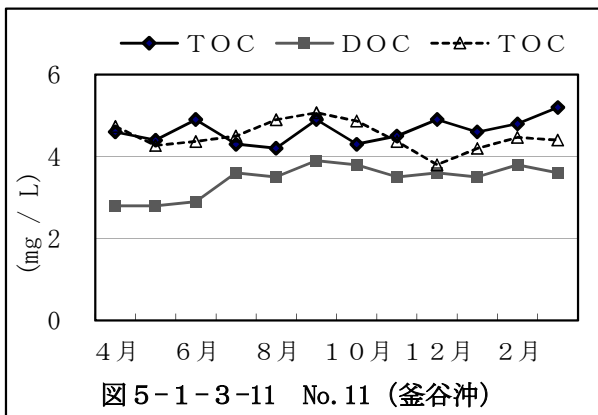
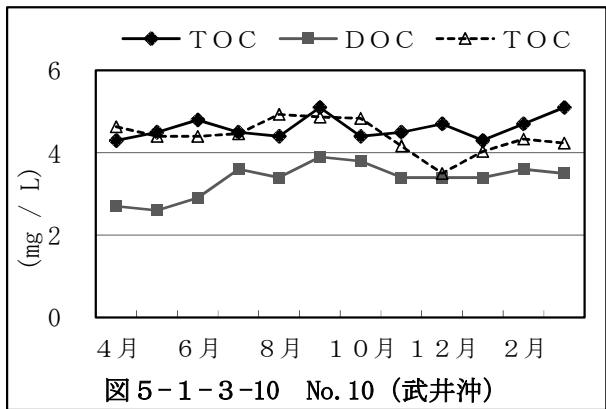
実線：R2年度、点線：過去3年間平均



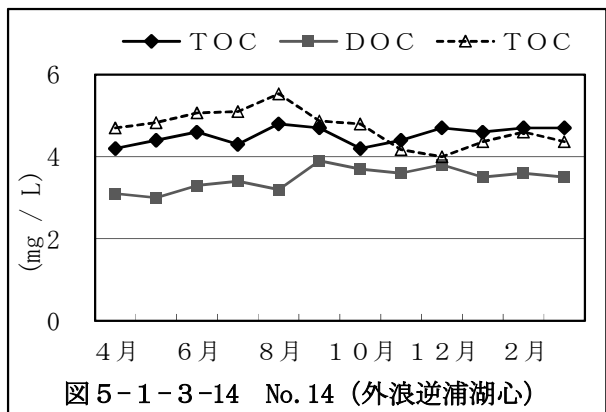
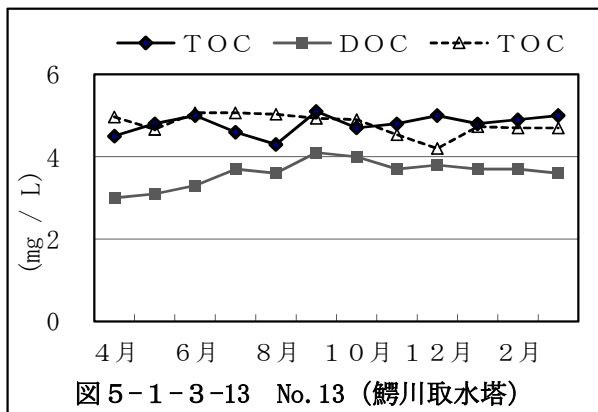
TOC経月変化（北浦）



実線：R2年度、点線：過去3年間平均

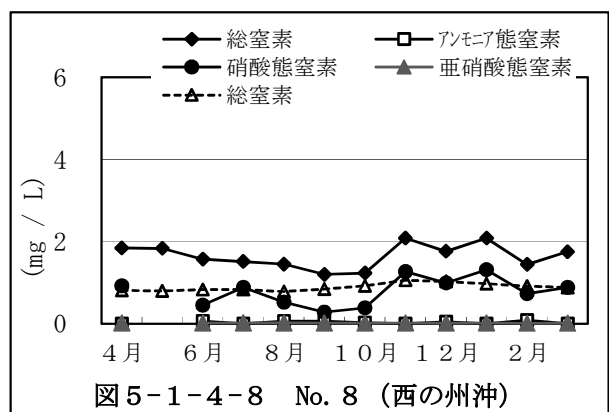
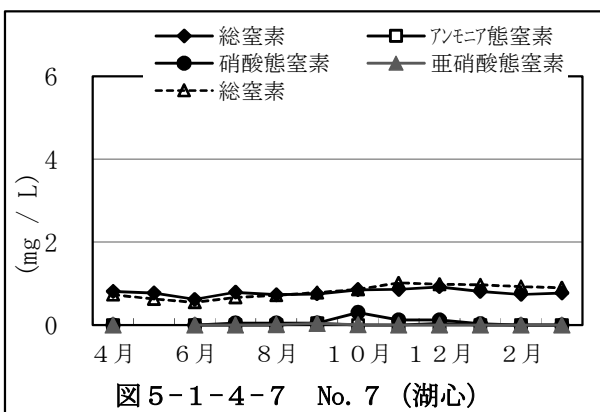
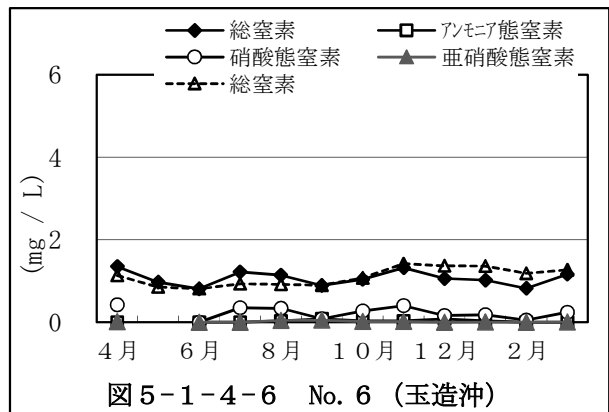
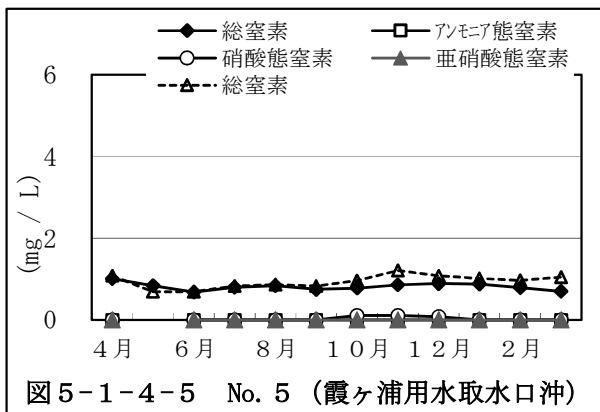
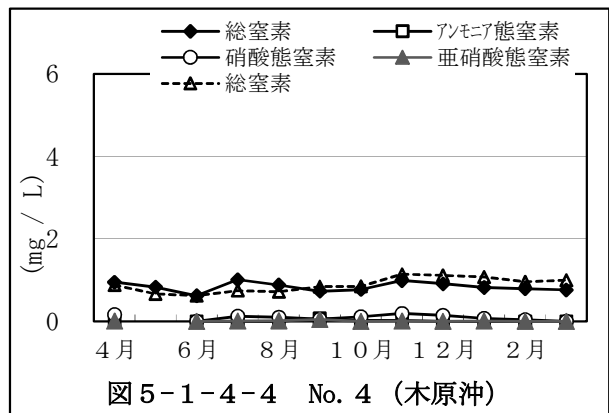
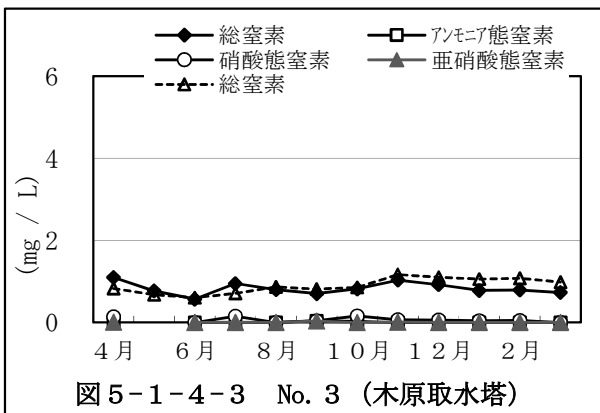
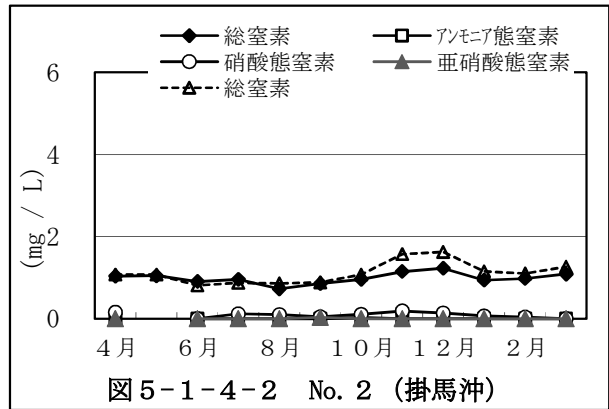
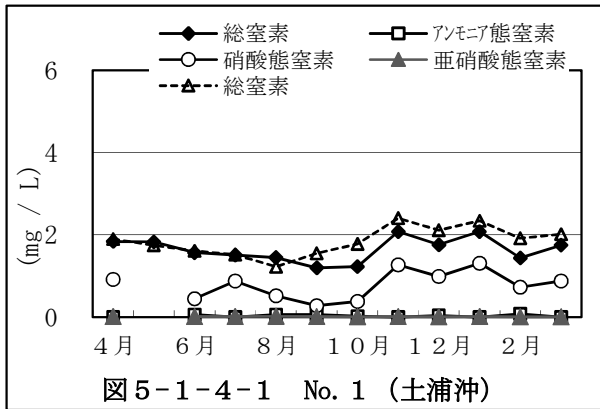


TOC経月変化（鰐川、外浪逆浦）

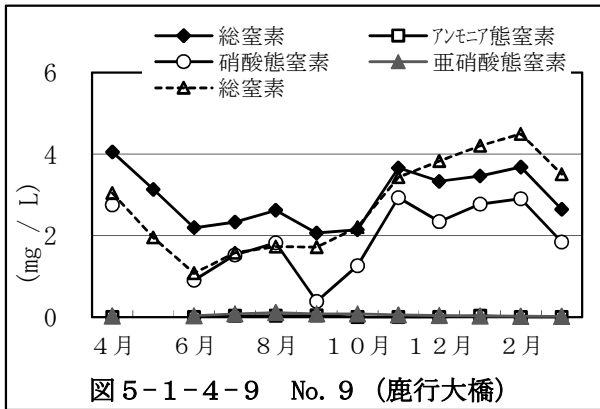


5.1.4 窒素類経月変化（西浦）

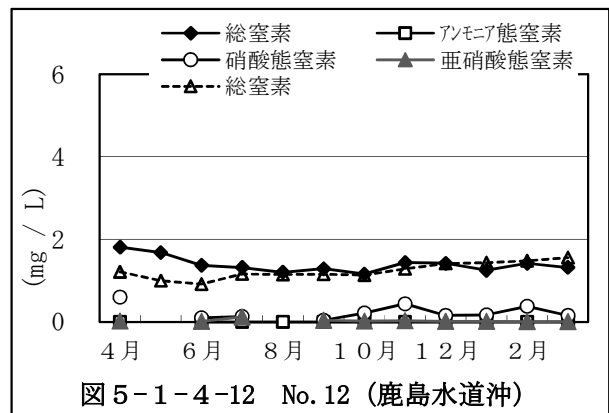
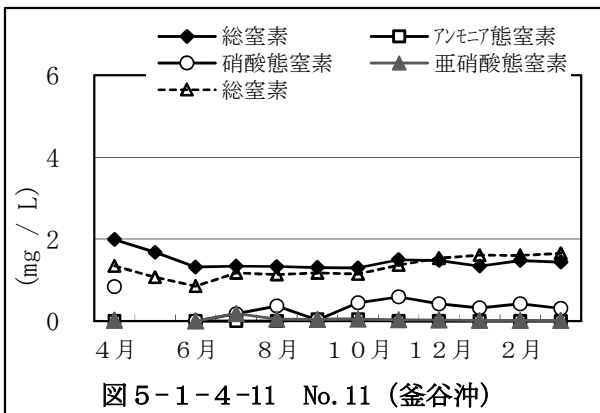
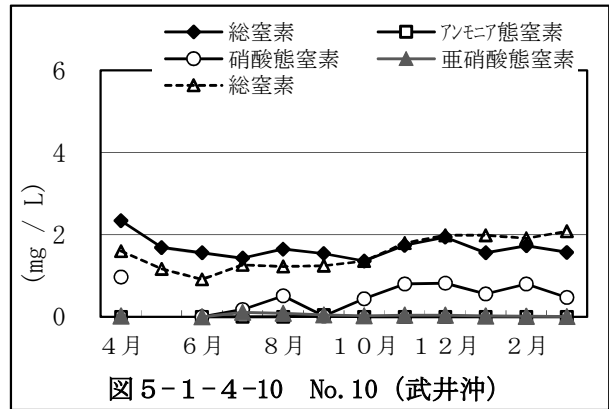
実線：R2年度、点線：過去3年間平均



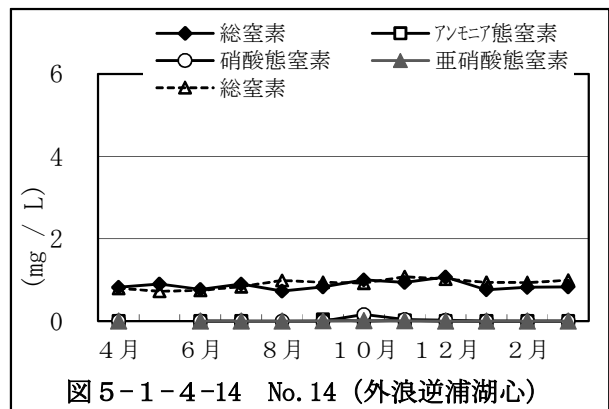
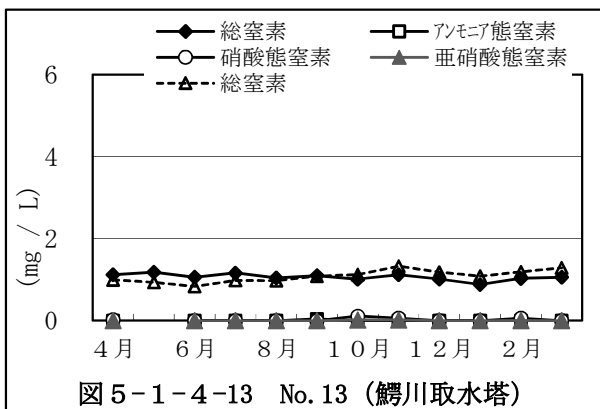
窒素類経月変化（北浦）



実線：R2年度、点線：過去3年間平均



窒素類経月変化（鰐川、外浪逆浦）

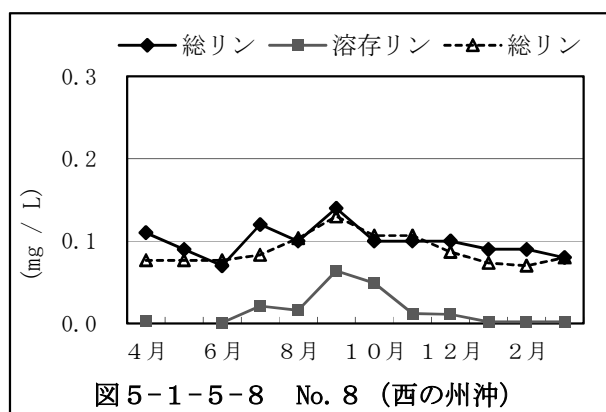
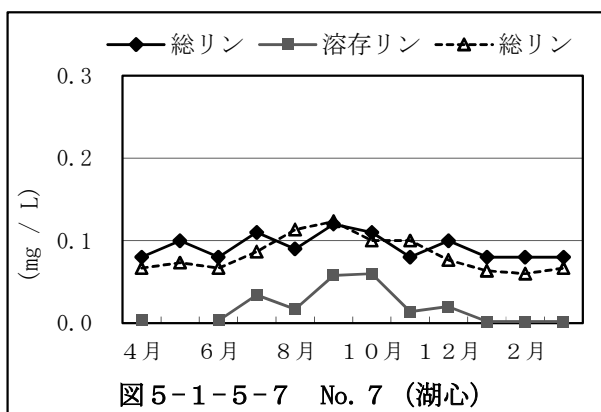
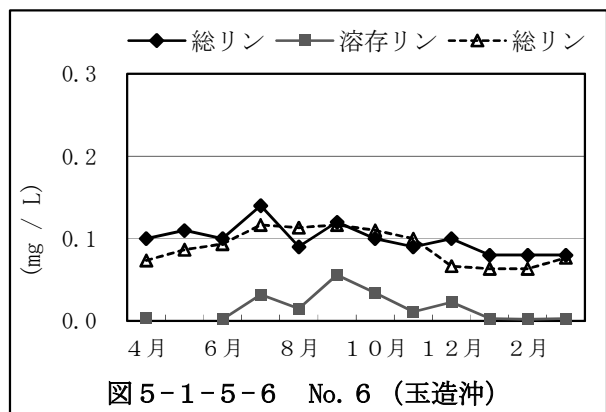
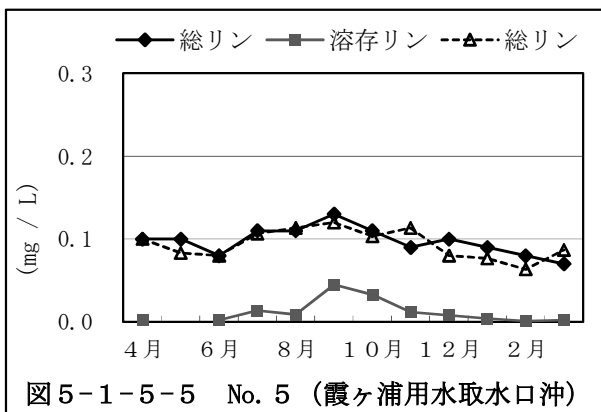
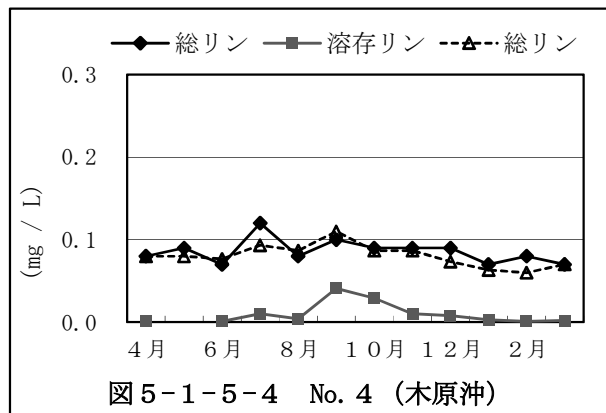
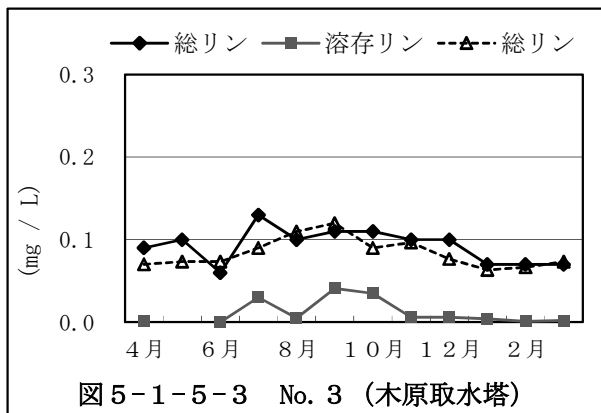
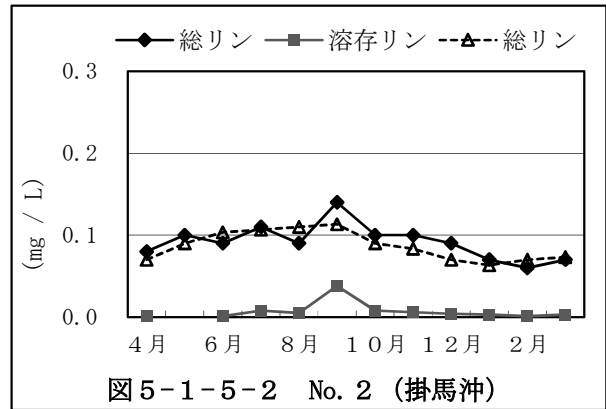
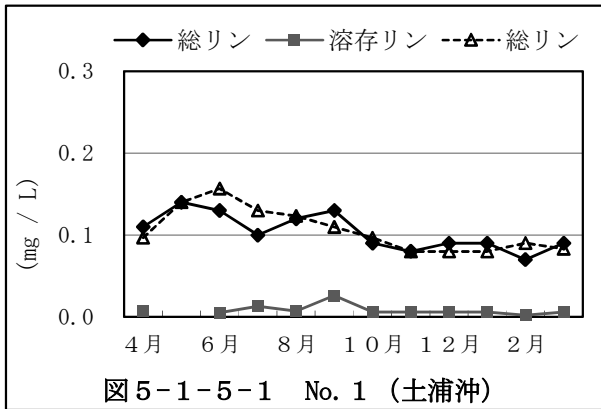


注) 定量下限値(アンモニア態窒素：0.02 mg/L、亜硝酸態窒素：0.004 mg/L、硝酸態窒素：0.02 mg/L)未滿は、0 mg/Lで表示  
 注) 5月のアンモニア態窒素、亜硝酸態窒素及び硝酸態窒素は欠測  
 注) No. 12の8月の亜硝酸態窒素及び硝酸態窒素は欠測

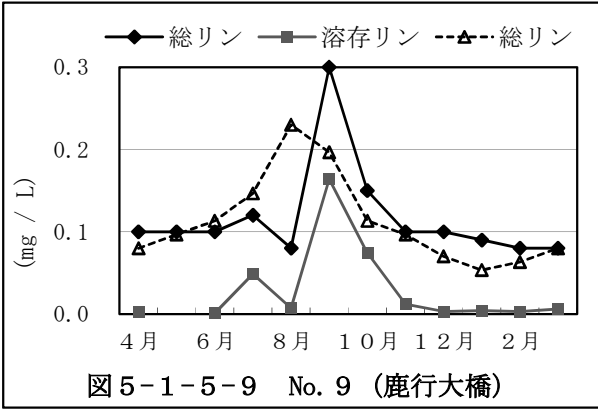


5.1.5 リン経月変化（西浦）

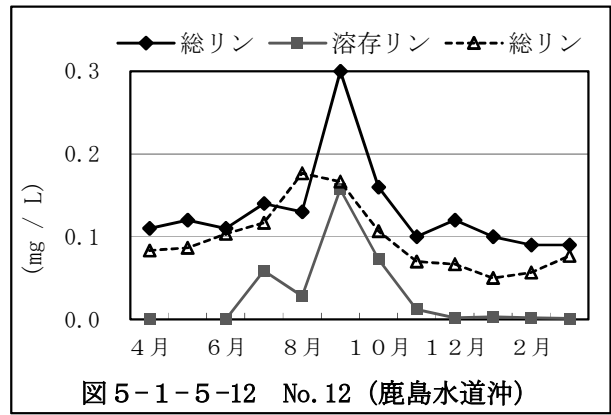
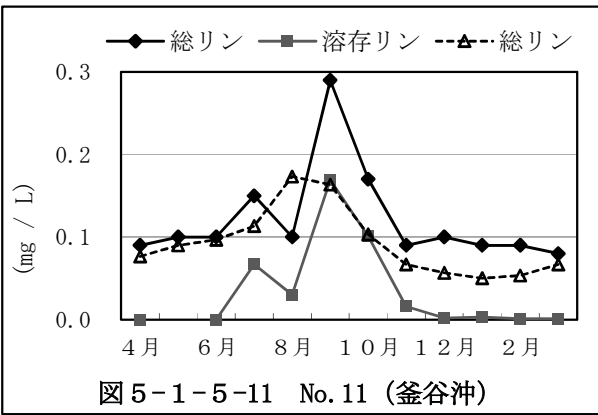
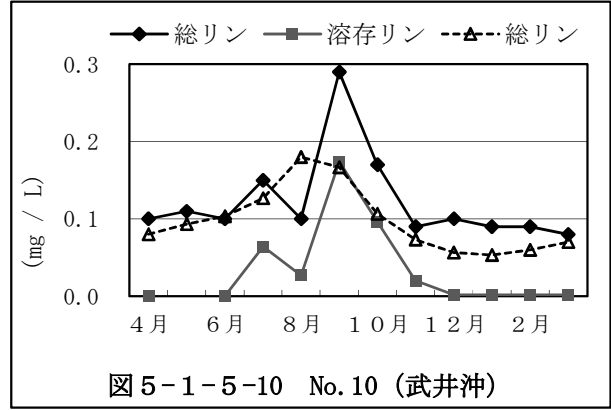
実線：R2年度、点線：過去3年間平均



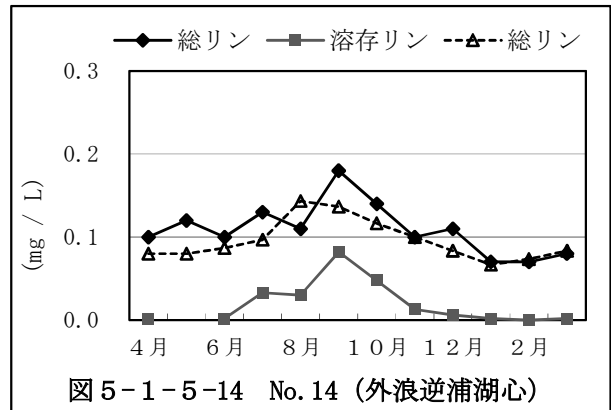
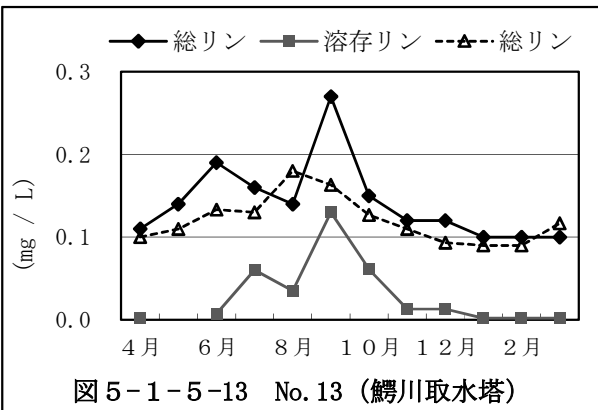
リン経月変化（北浦）



実線：R2年度、点線：過去3年間平均



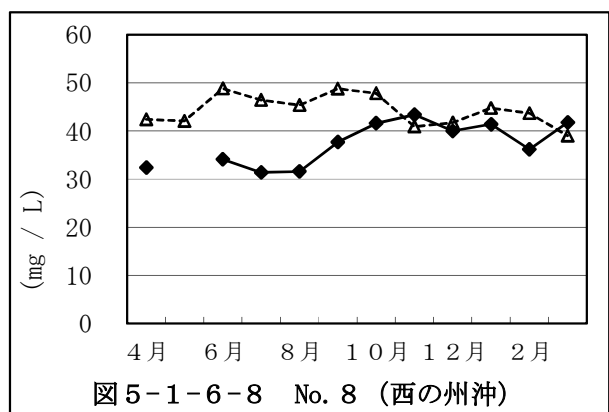
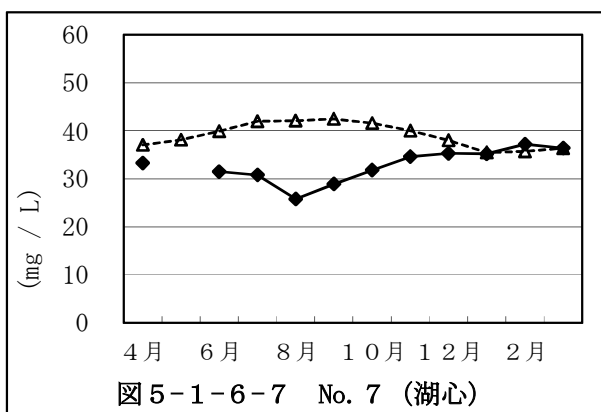
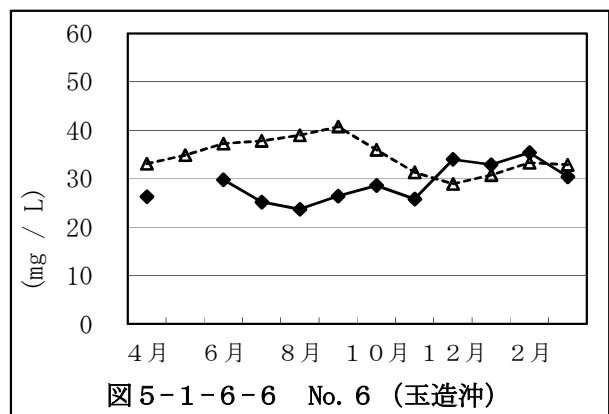
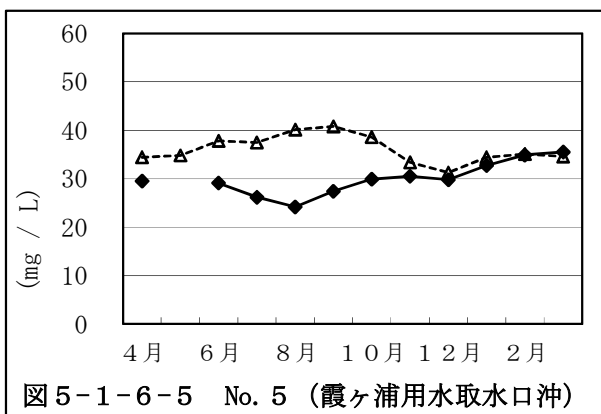
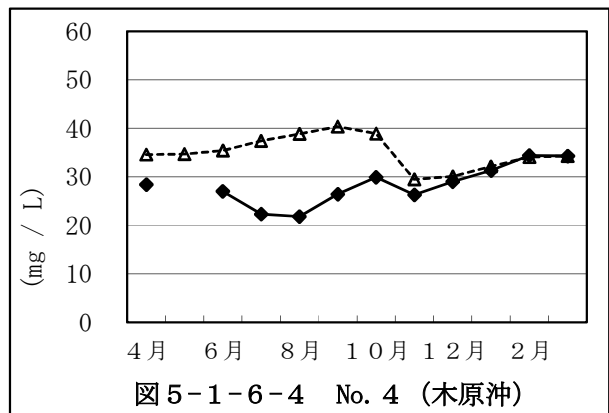
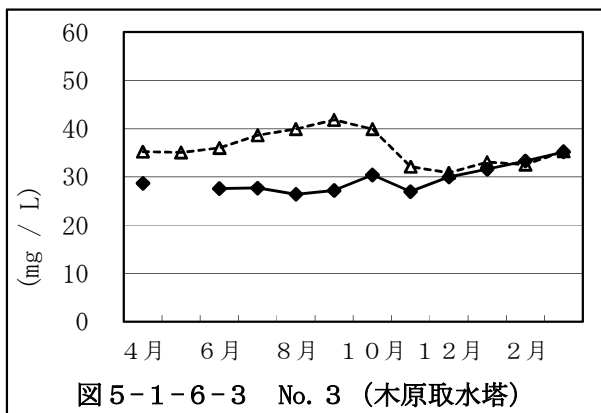
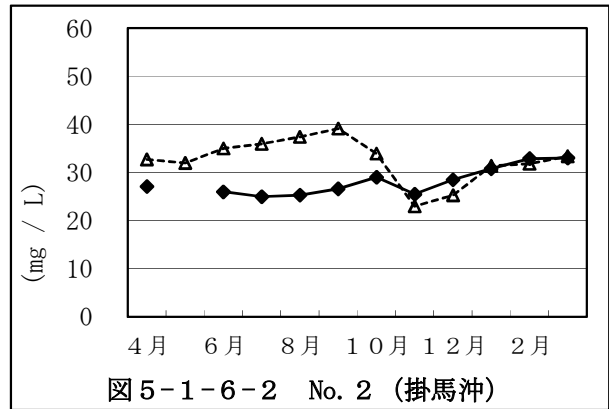
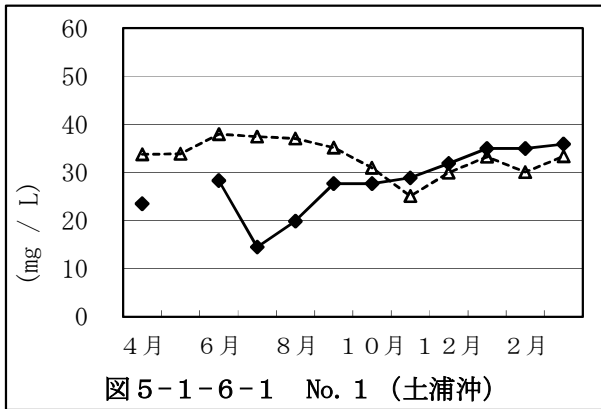
リン経月変化（鰐川、外浪逆浦）



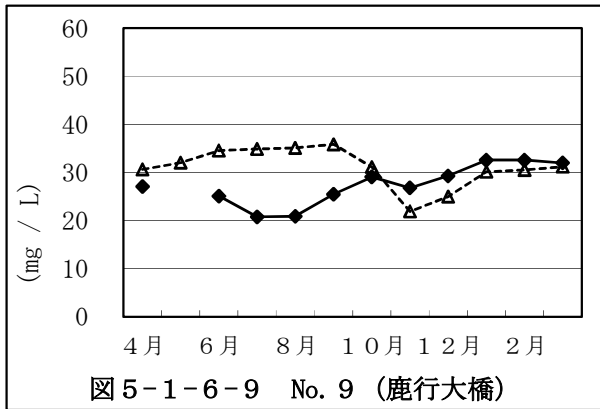
注) 定量下限値(0.001 mg/L)未満は、0 mg/Lで表示  
 注) 5月の溶存りんは欠測

5.1.6 塩化物イオン経月変化（西浦）

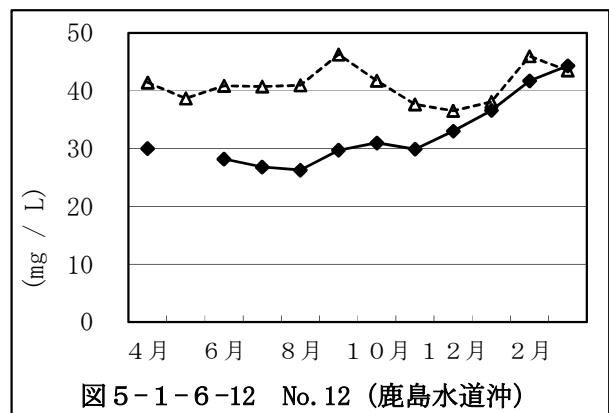
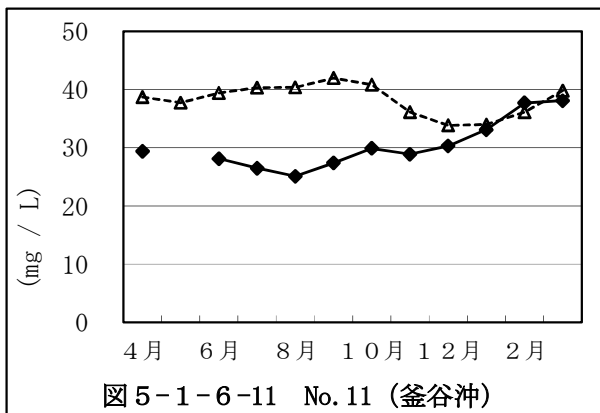
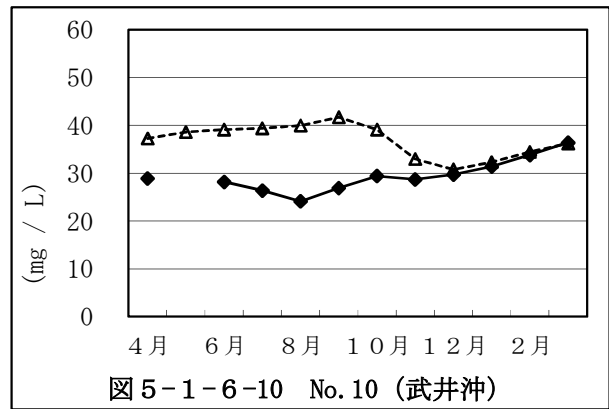
実線：R2年度、点線：過去3年間平均



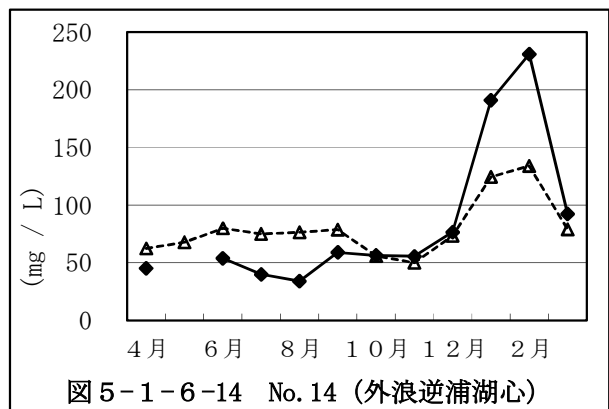
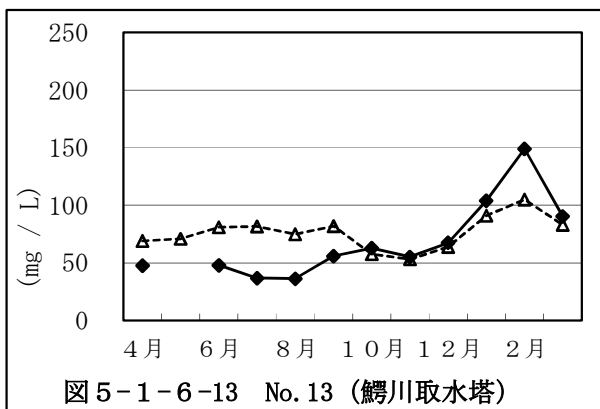
塩化物イオン経月変化（北浦）



実線：R2年度、点線：過去3年間平均



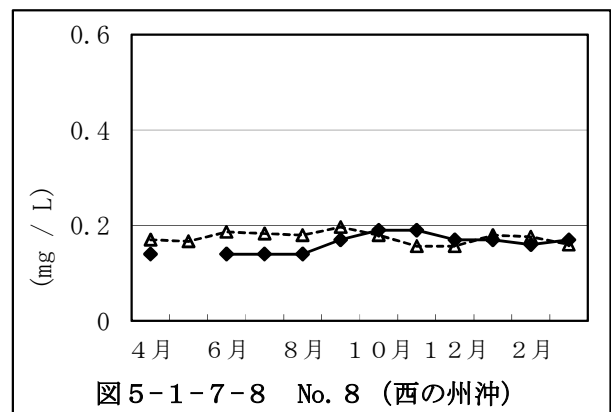
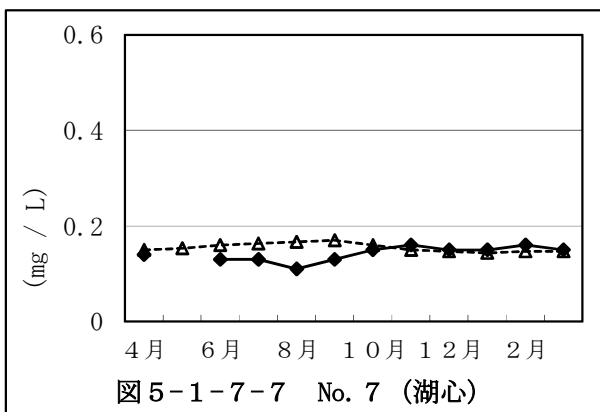
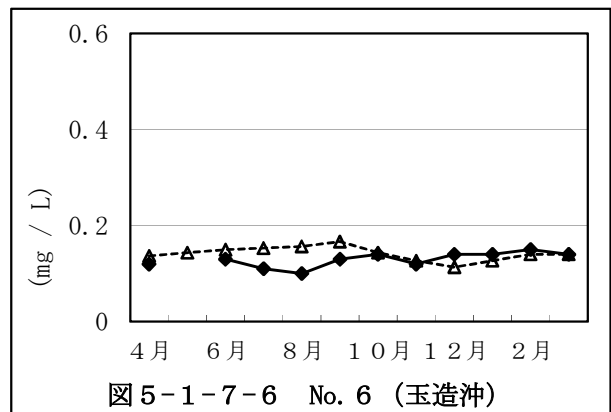
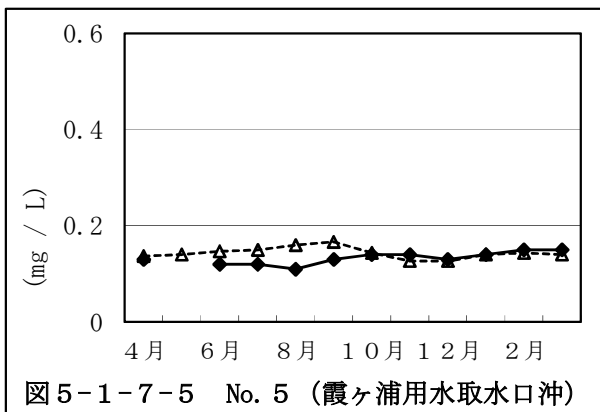
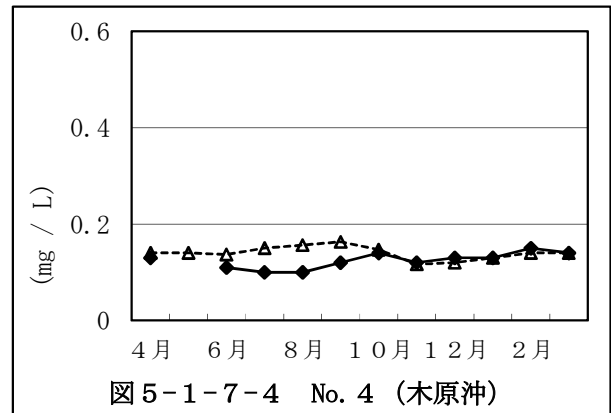
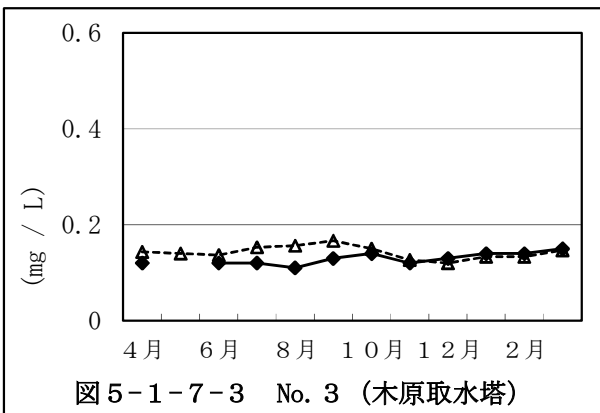
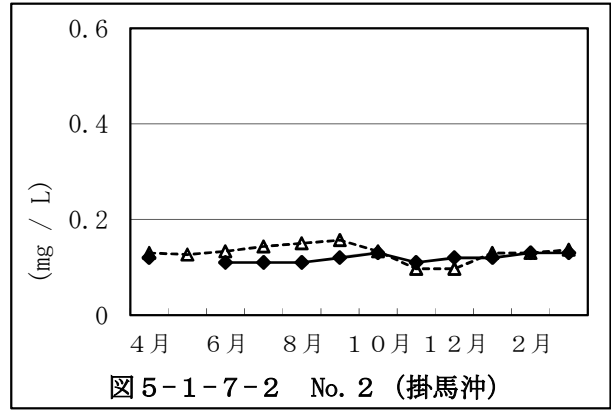
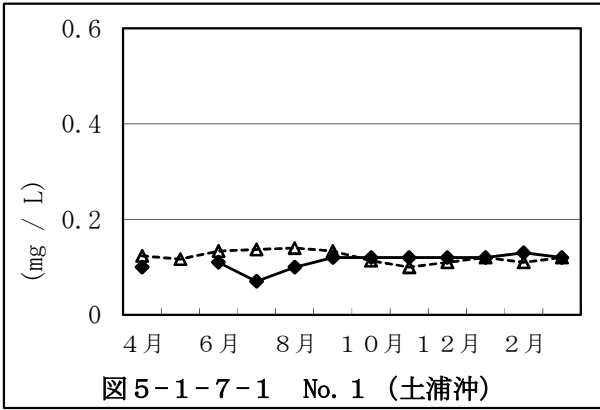
塩化物イオン経月変化（鰐川、外浪逆浦）



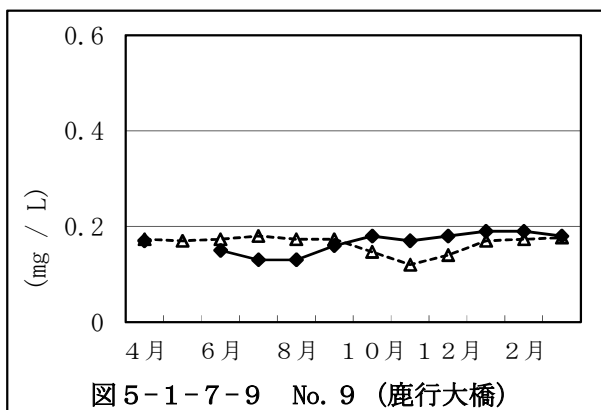
注) 5月は欠測

5.1.7 臭化物イオン経月変化（西浦）

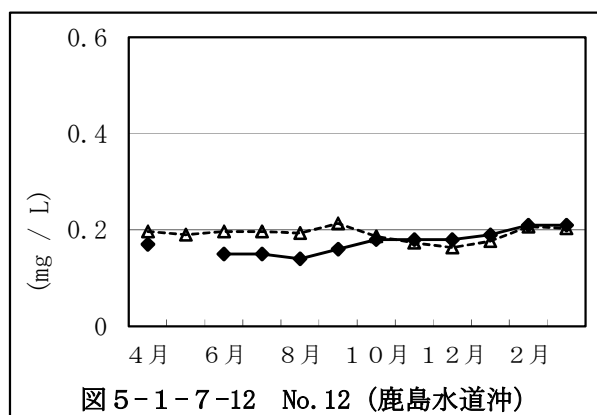
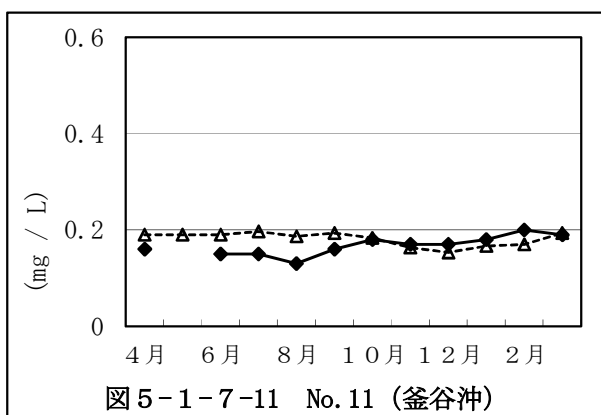
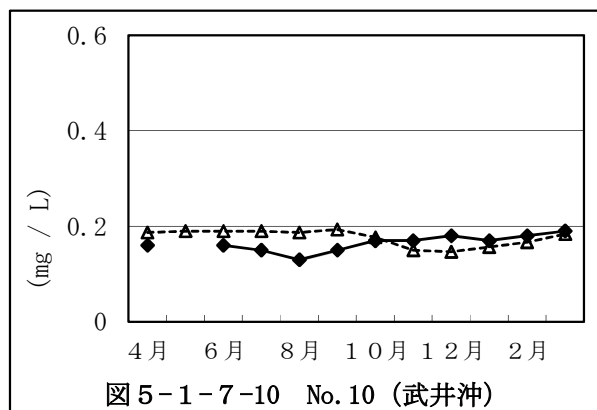
実線：R2年度、点線：過去3年間平均



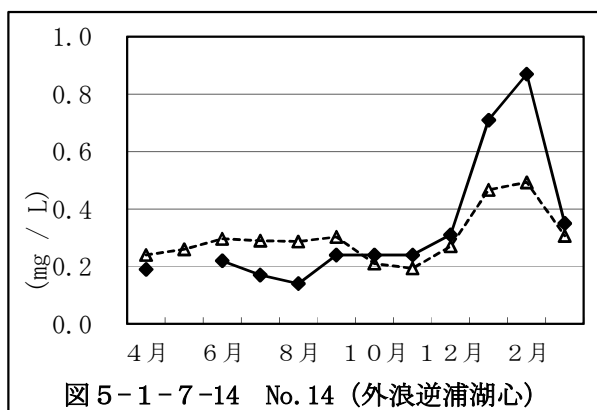
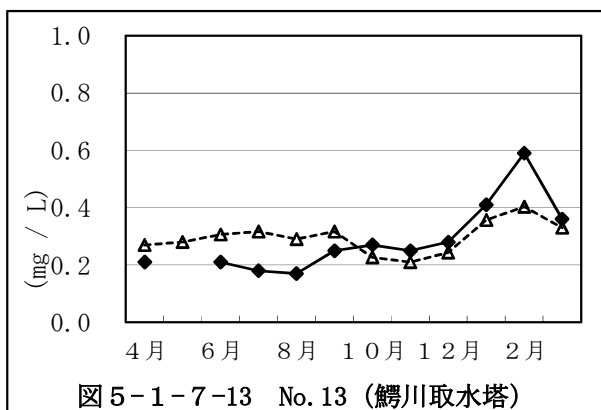
臭化物イオン経月変化（北浦）



実線：R2年度、点線：過去3年間平均



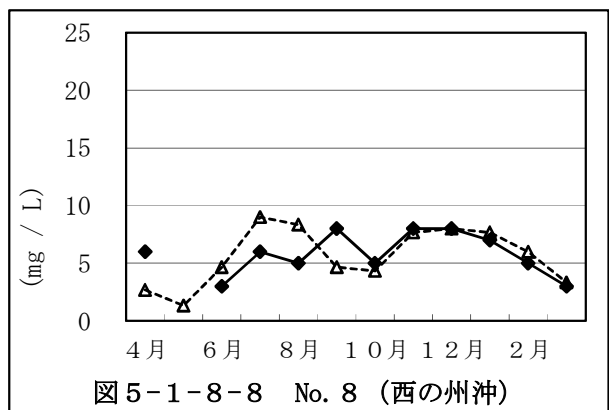
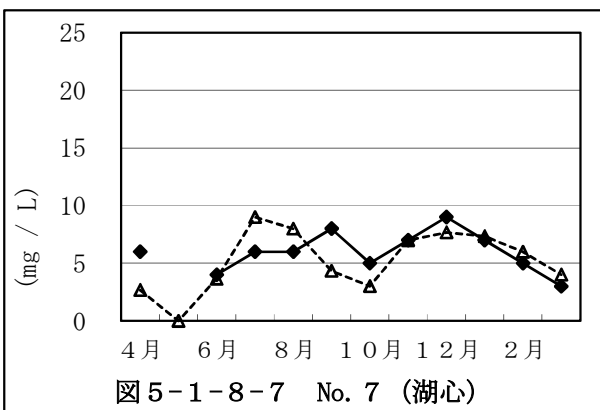
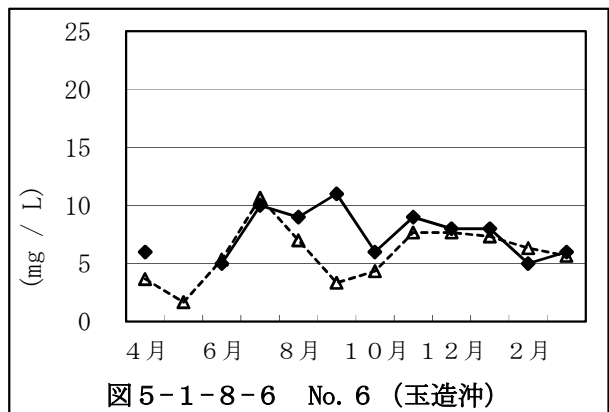
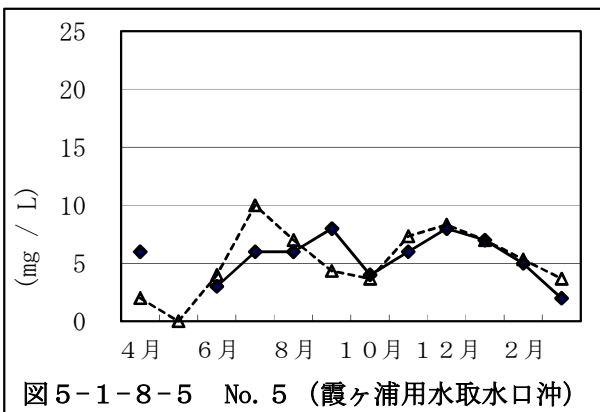
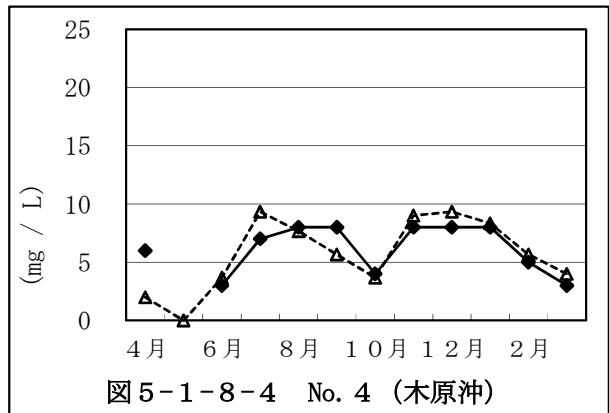
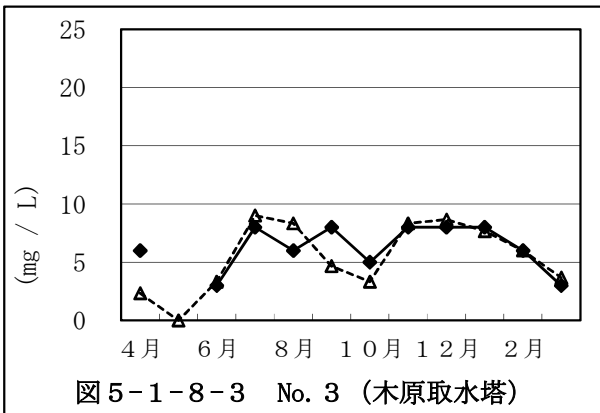
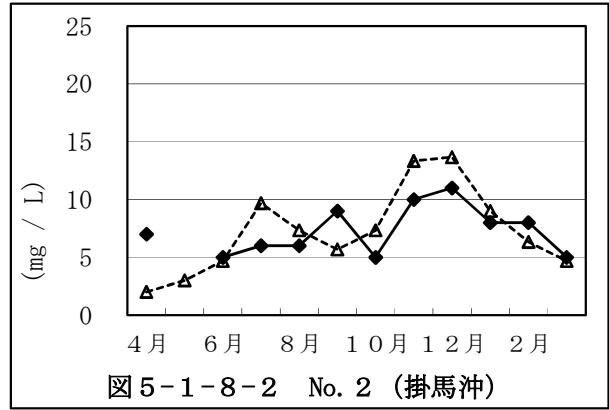
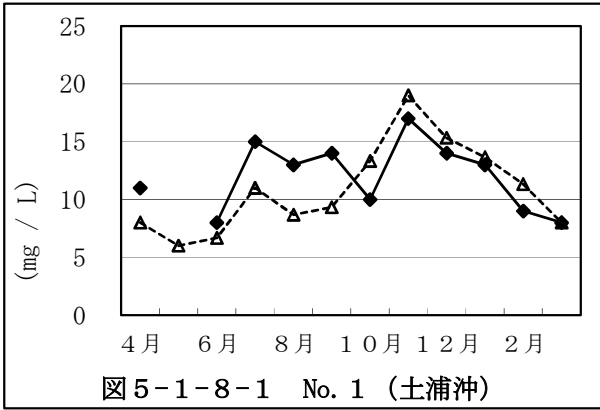
臭化物イオン経月変化（鰐川、外浪逆浦）



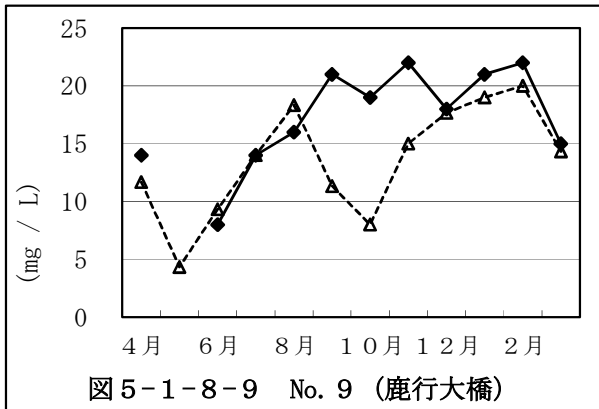
注) 定量下限値(0.10 mg/L)未満は、0 mg/Lで表示  
 注) 5月は欠測

5.1.8 溶性ケイ酸経月変化（西浦）

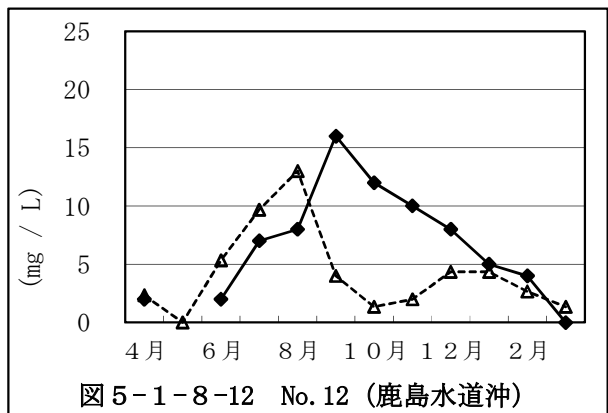
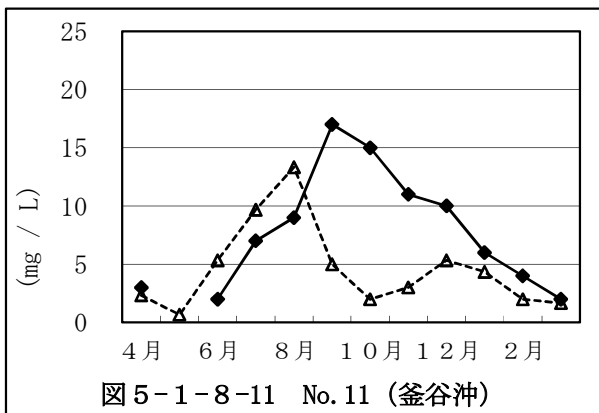
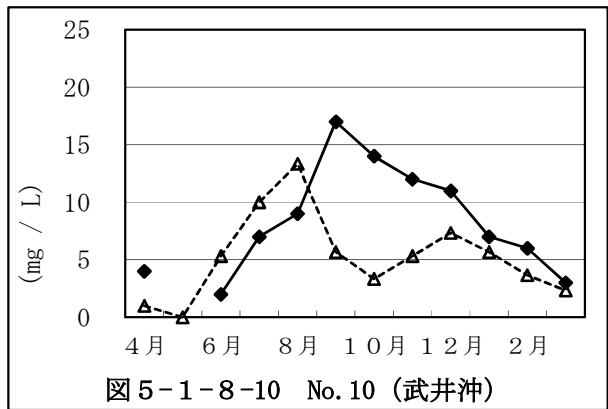
実線：R2年度、点線：過去3年間平均



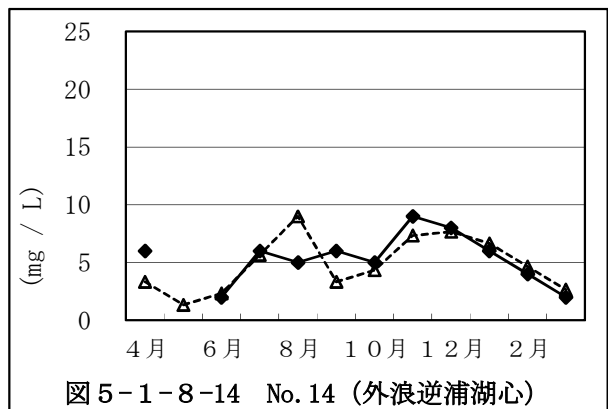
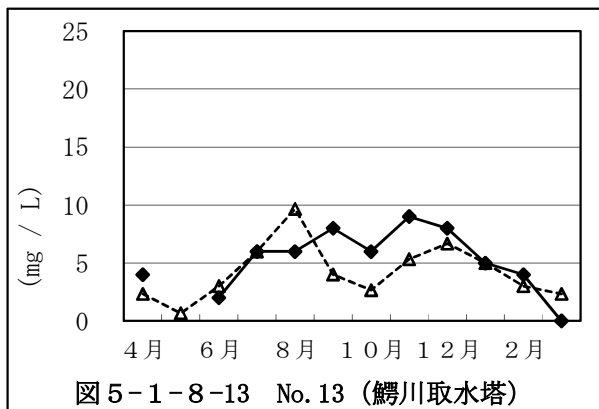
溶性ケイ酸経月変化（北浦）



実線：R2年度、点線：過去3年間平均



溶性ケイ酸経月変化（鰐川、外浪逆浦）

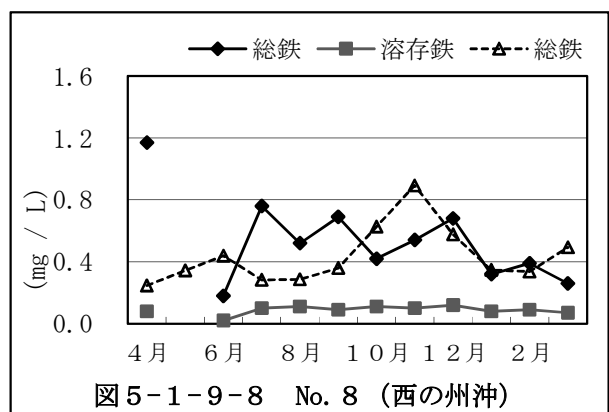
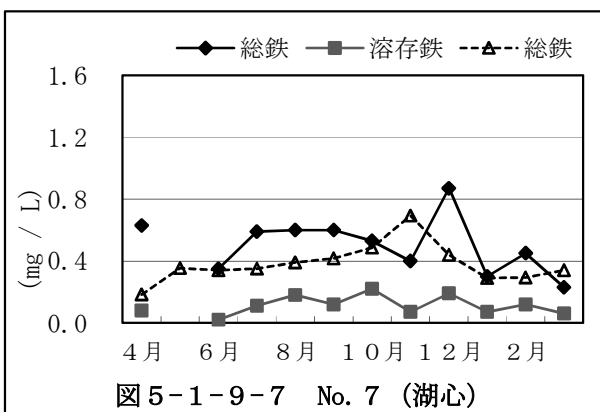
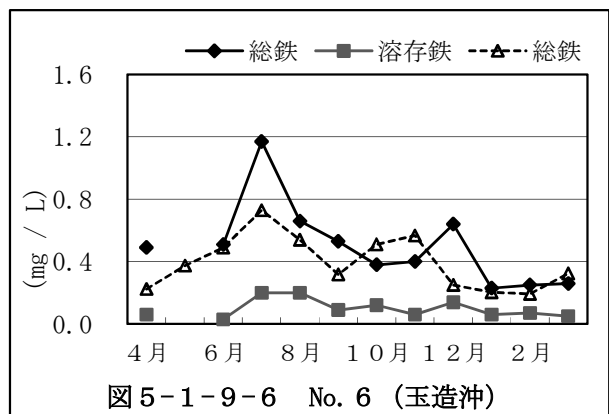
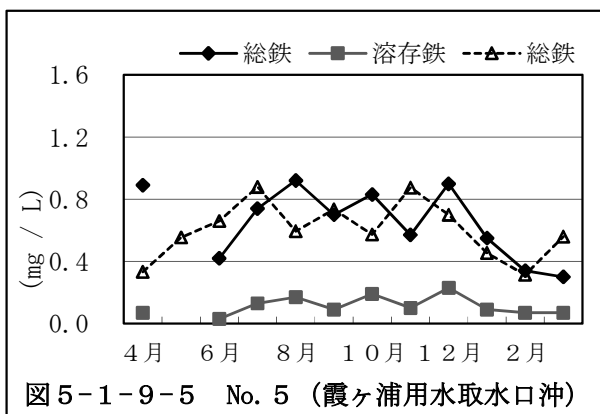
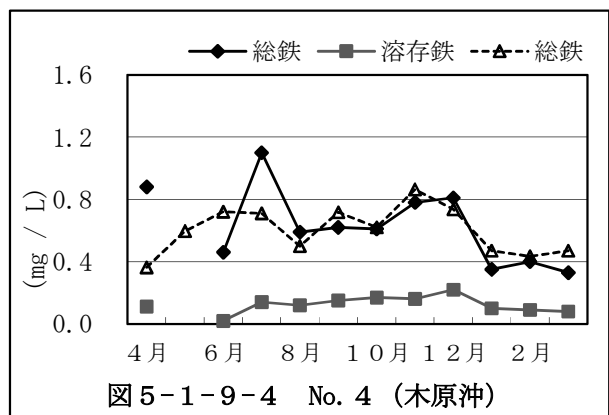
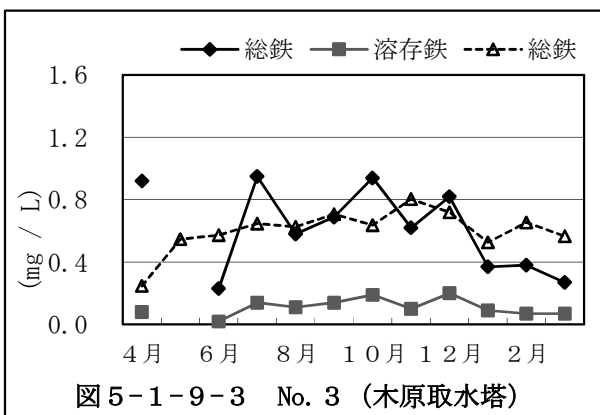
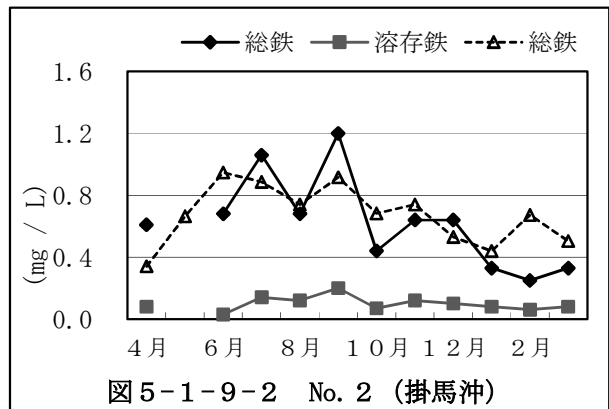
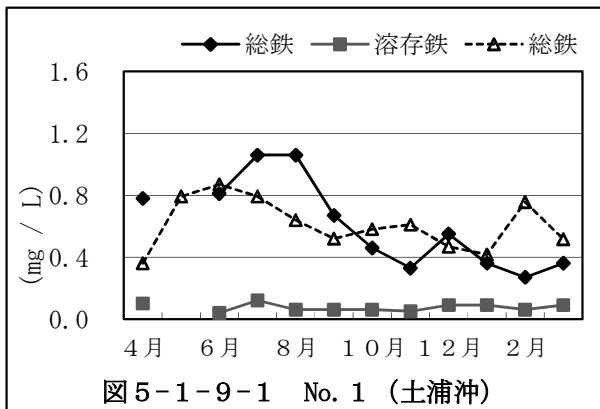


注) 定量下限値(2 mg/L)未満は、0 mg/Lで表示  
 注) 5月は欠測

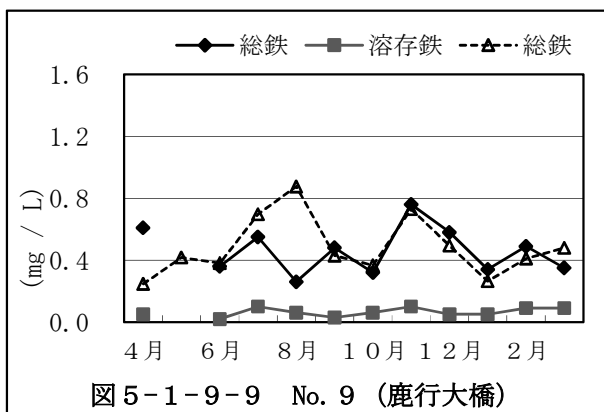


5.1.9 鉄経月変化（西浦）

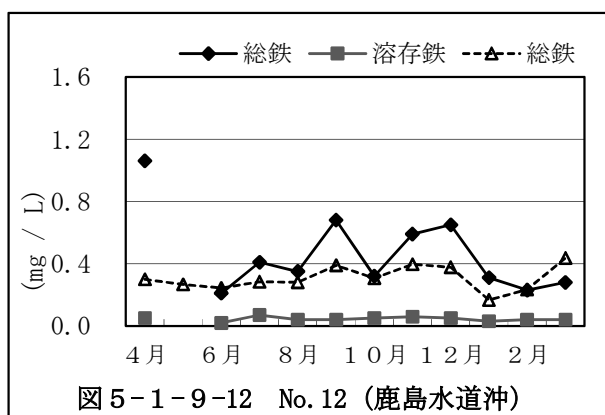
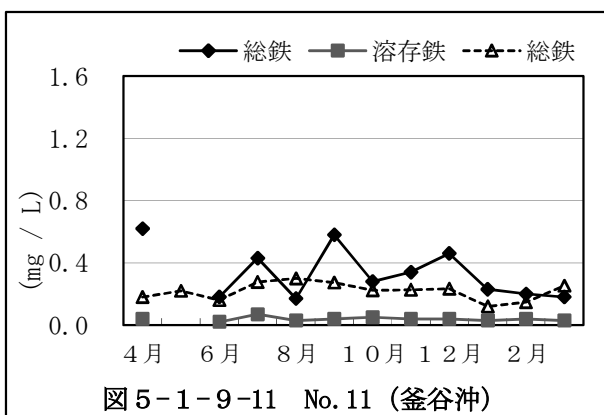
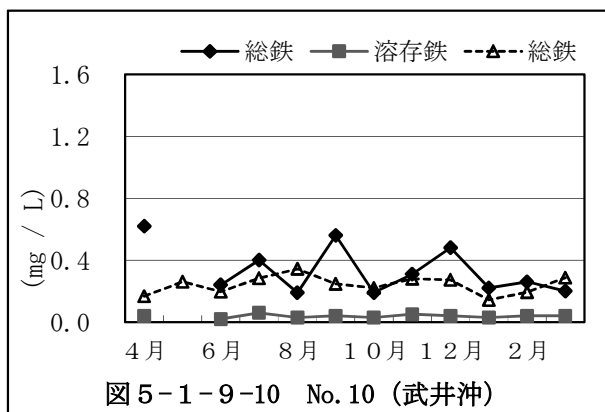
実線：R2年度、点線：過去3年間平均



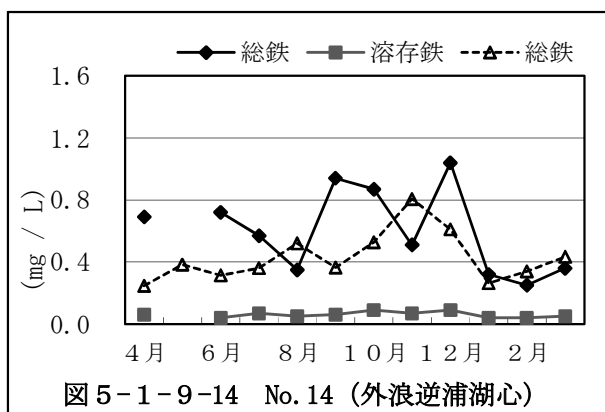
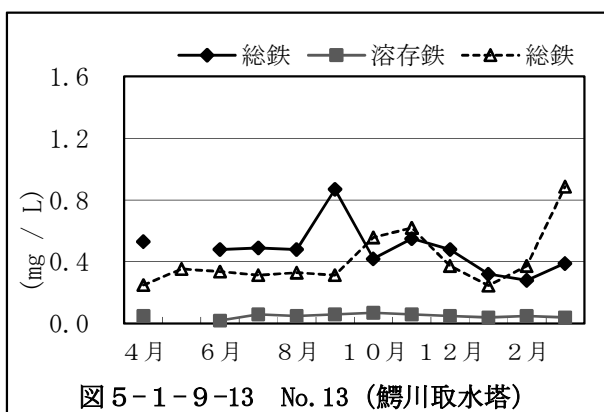
鉄経月変化（北浦）



実線：R2年度、点線：過去3年間平均



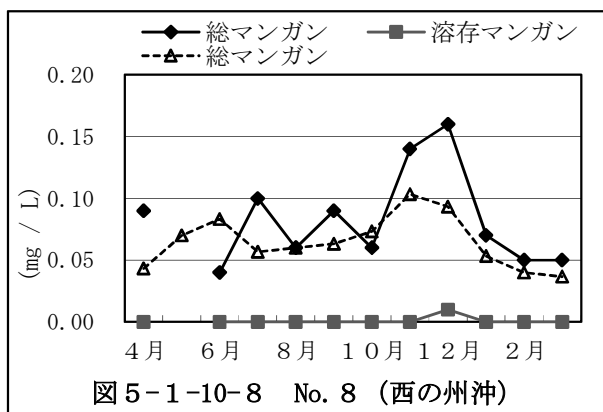
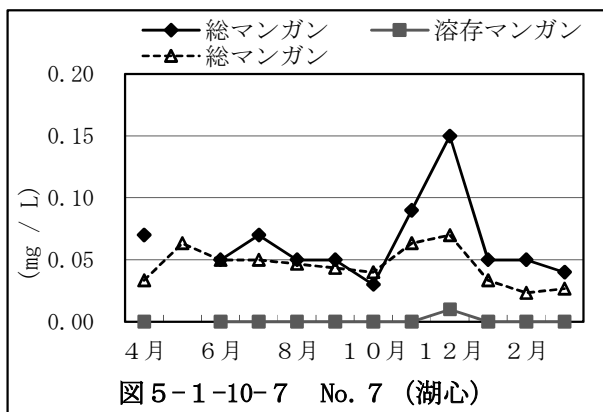
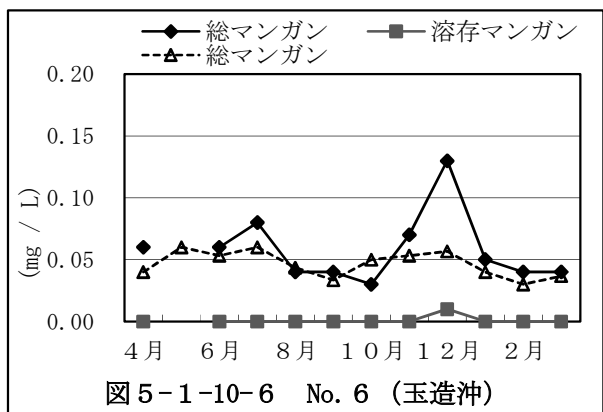
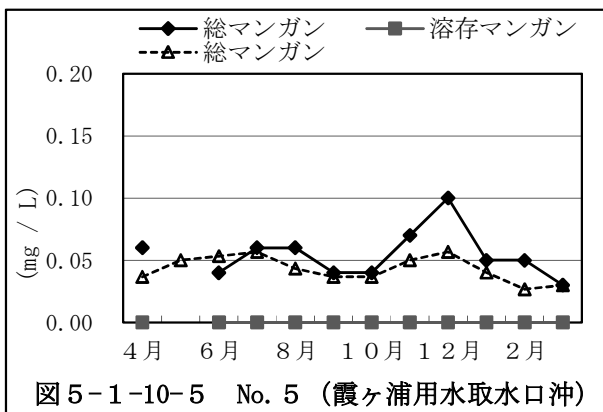
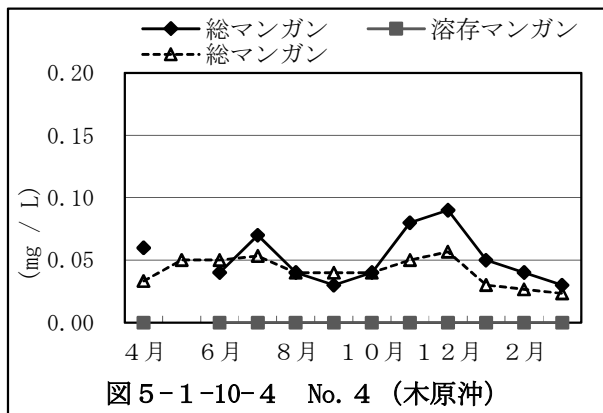
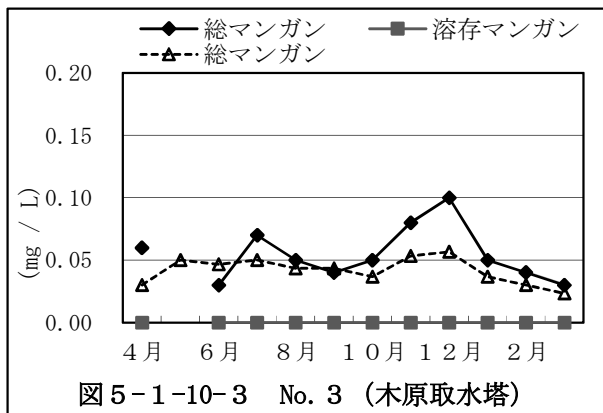
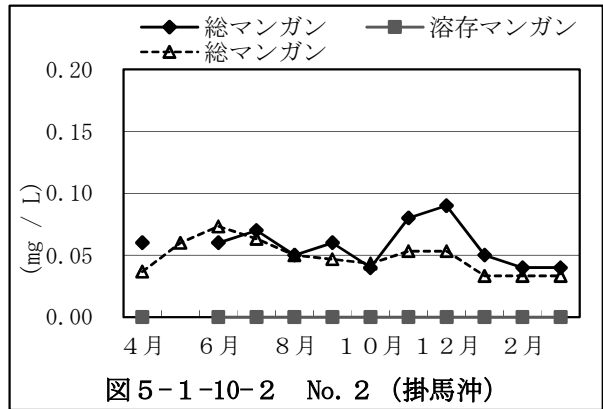
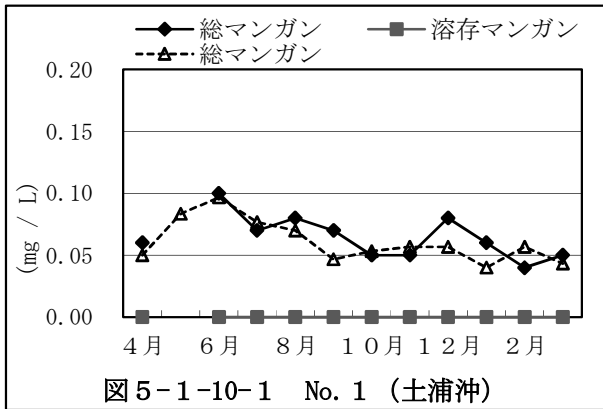
鉄経月変化（鰯川、外浪逆浦）



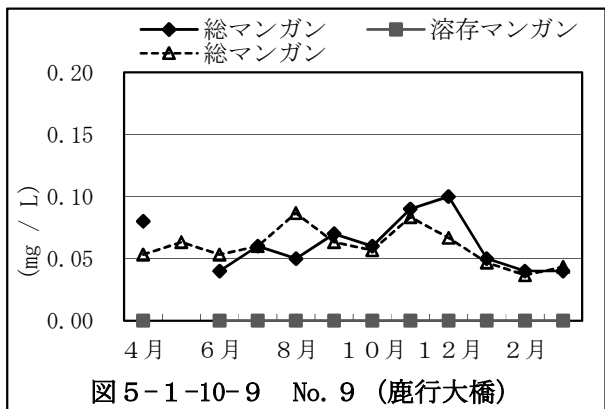
注) 5月は欠測

5.1.10 マンガン経月変化 (西浦)

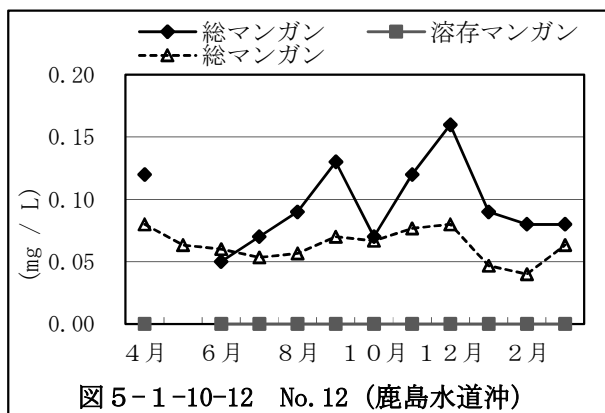
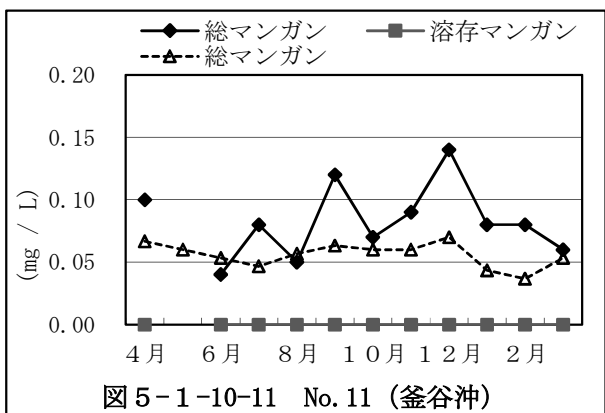
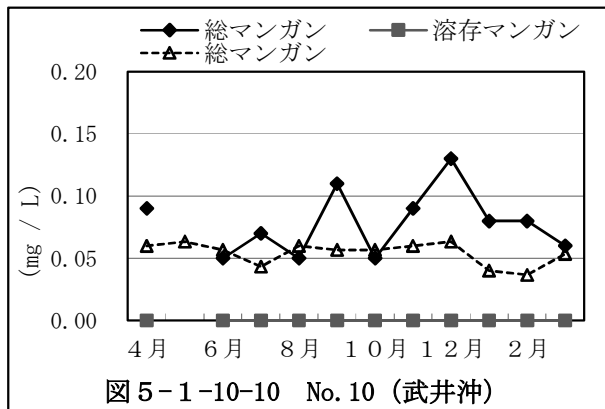
実線：R2年度、点線：過去3年間平均



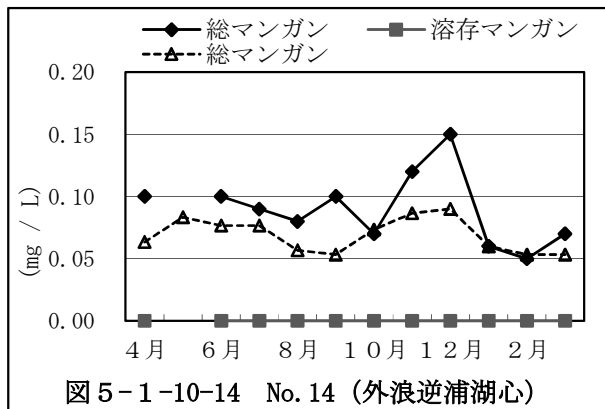
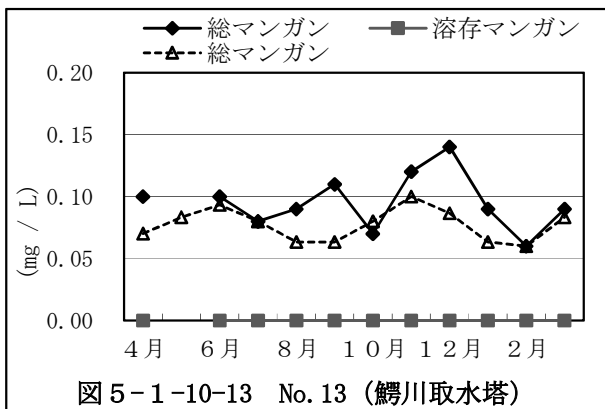
マンガン経月変化（北浦）



実線：R2年度、点線：過去3年間平均



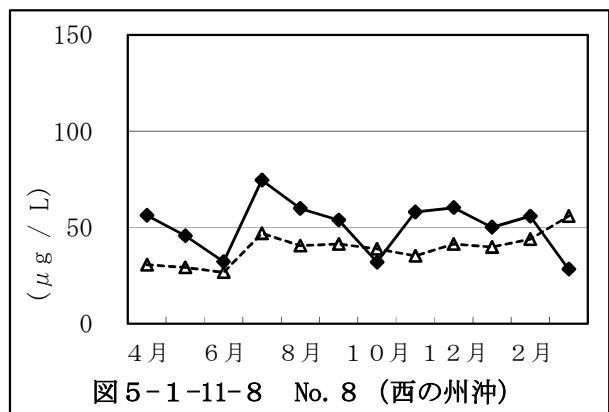
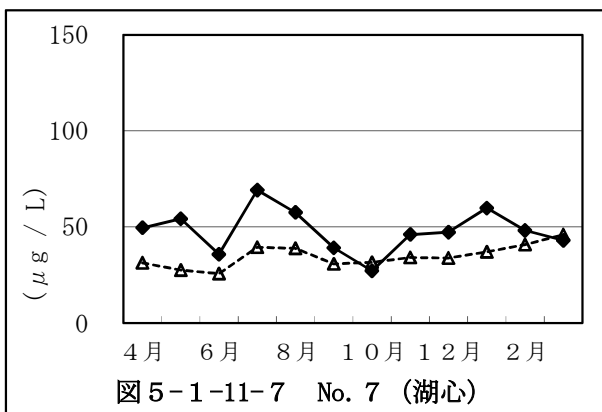
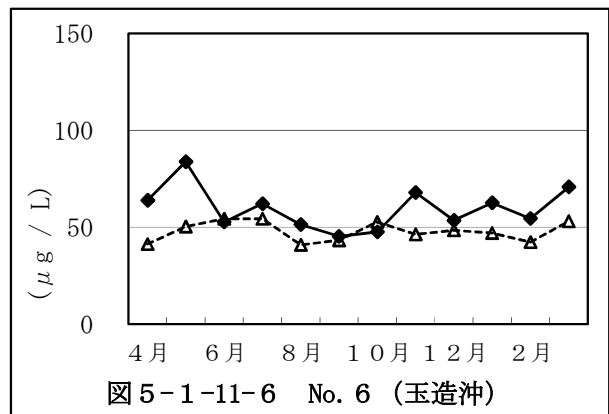
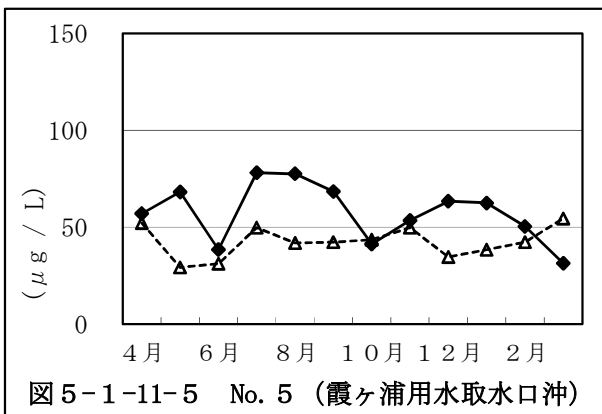
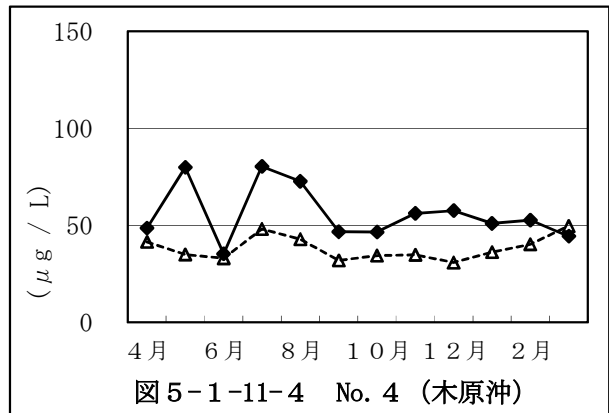
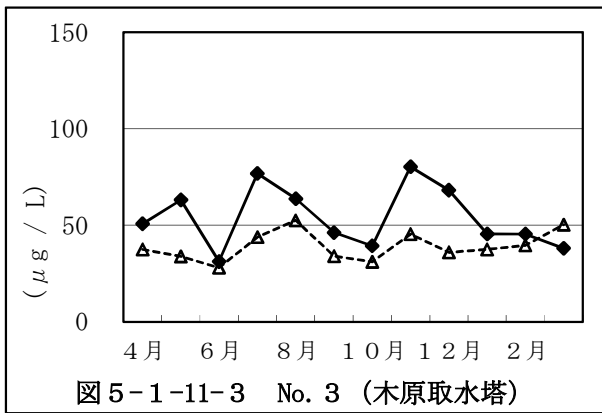
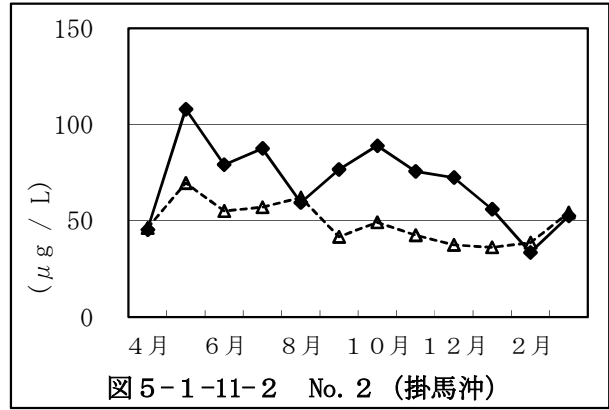
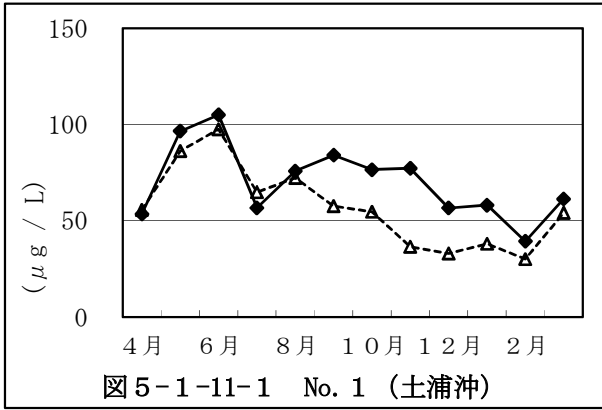
マンガン経月変化（鰐川、外浪逆浦）



注) 定量下限値(0.01 mg/L)未満は、0 mg/Lで表示  
 注) 5月は欠測

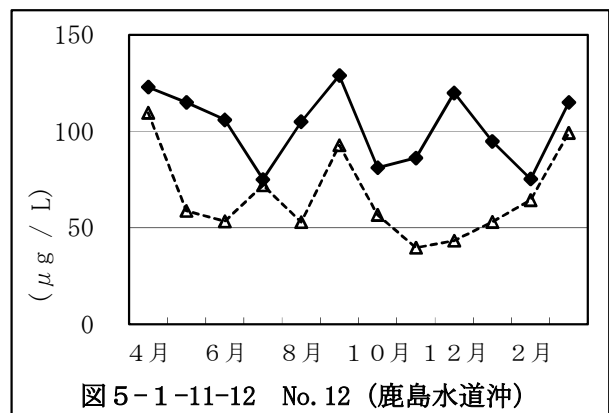
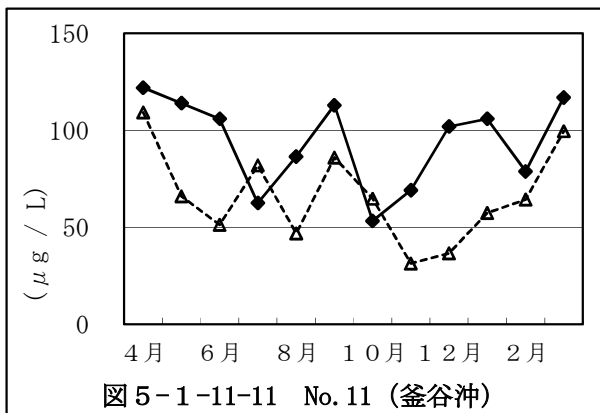
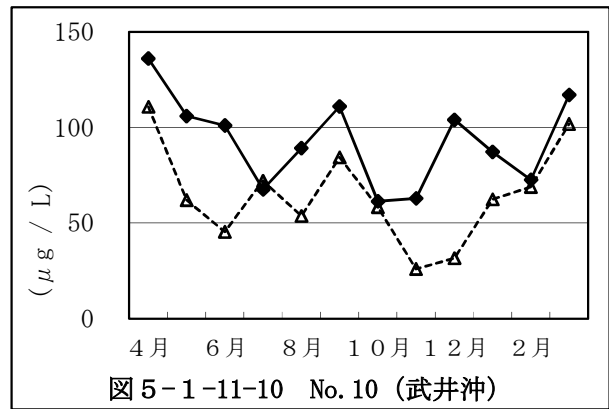
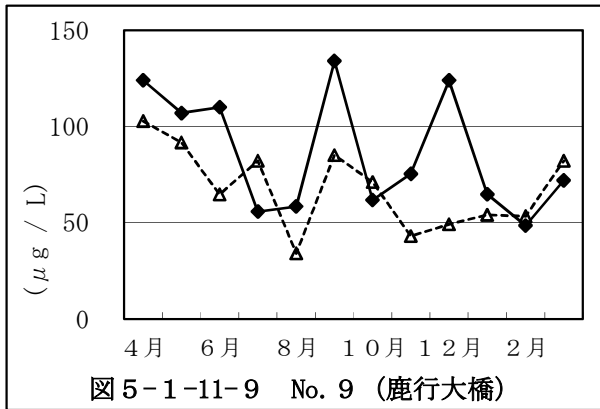
5.1.11 クロロフィルa経月変化（西浦）

実線：R2年度、点線：過去3年間平均

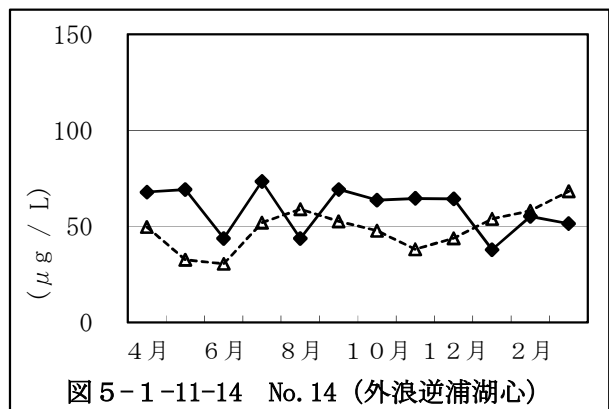
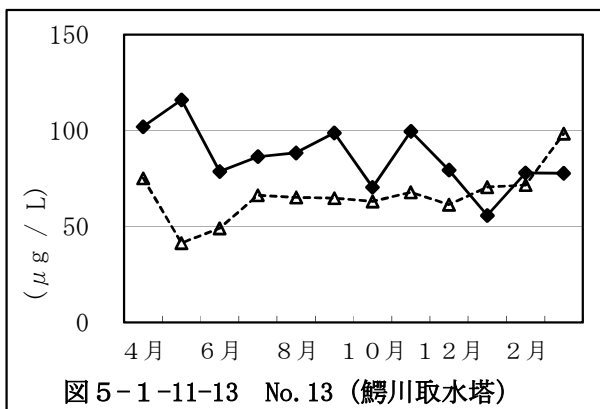


クロロフィルa経月変化（北浦）

実線：R2年度、点線：過去3年間平均

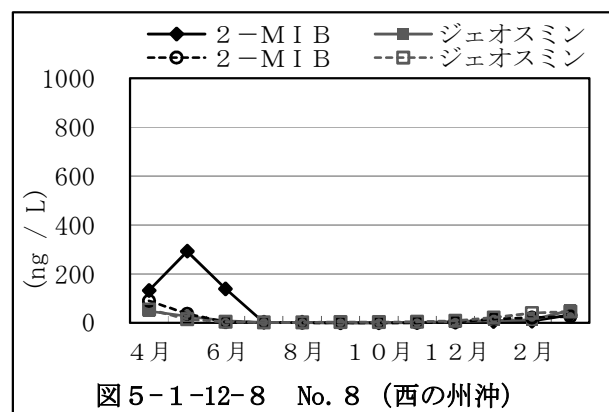
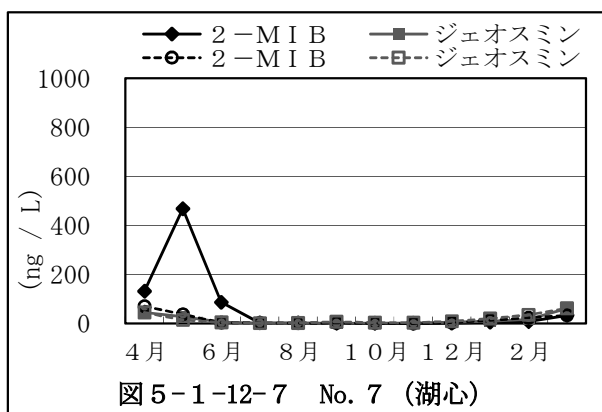
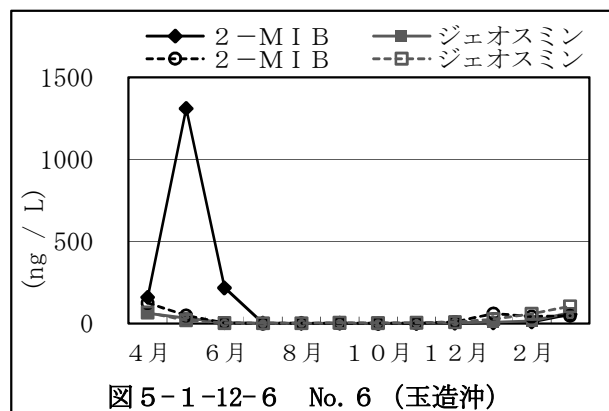
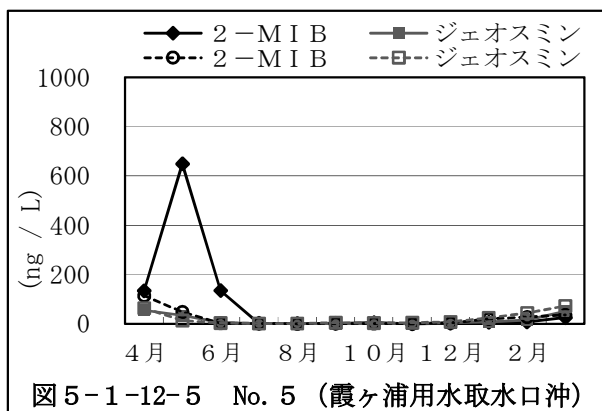
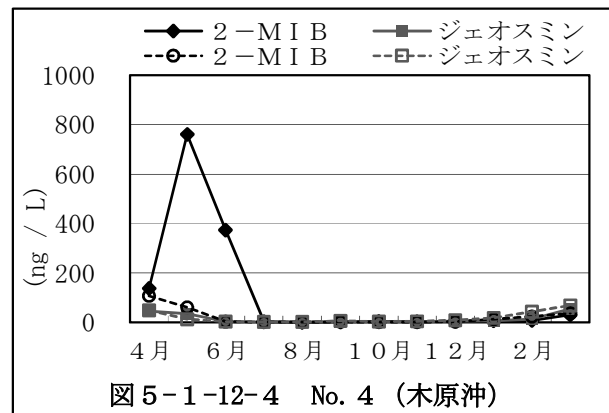
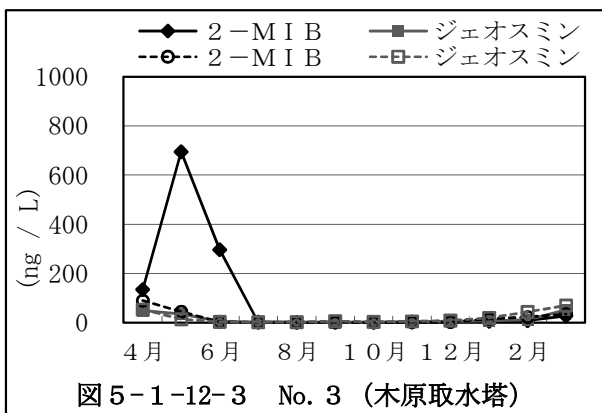
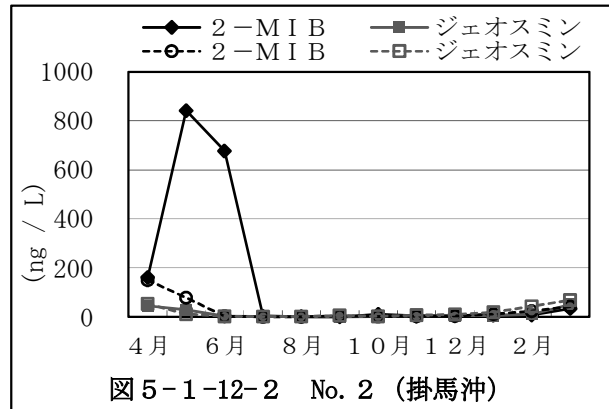
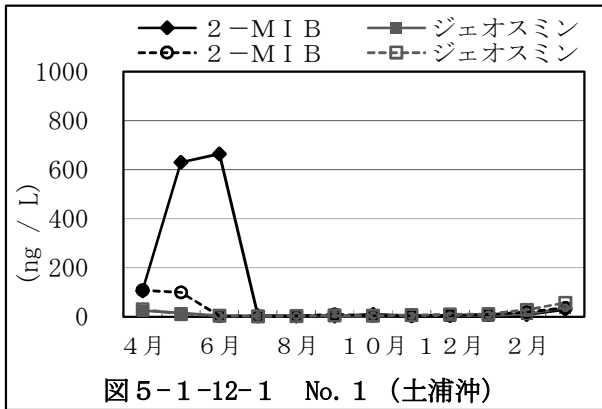


クロロフィルa経月変化（鰯川、外浪逆浦）

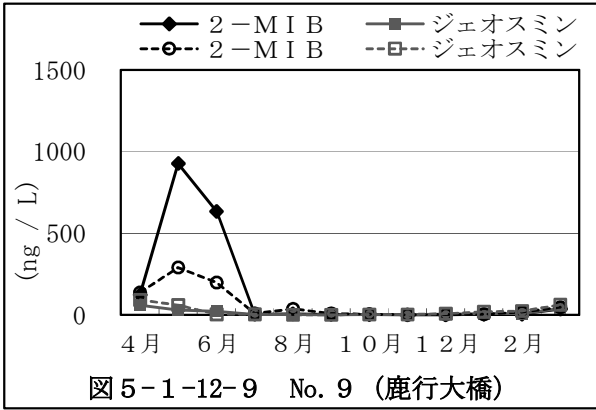


5.1.12 異臭味原因物質経月変化（西浦）

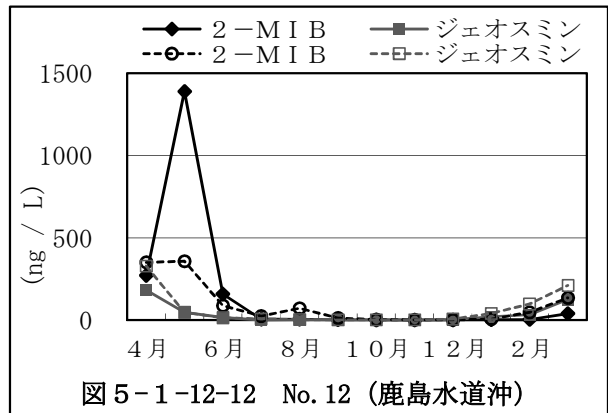
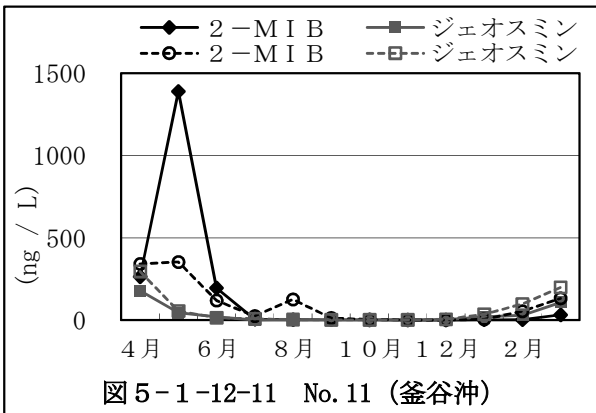
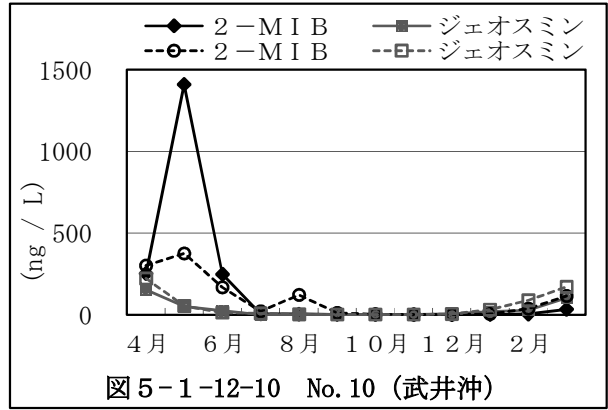
実線：R2年度、点線：過去3年間平均



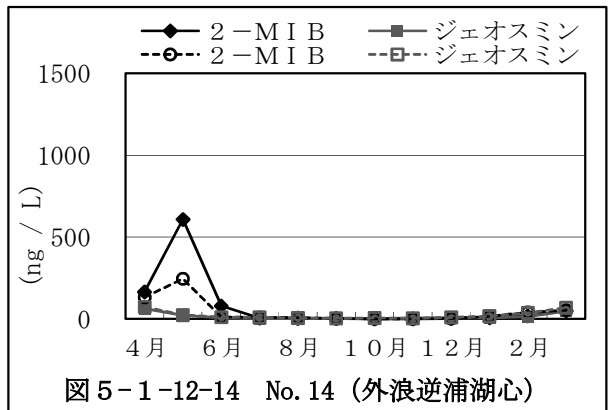
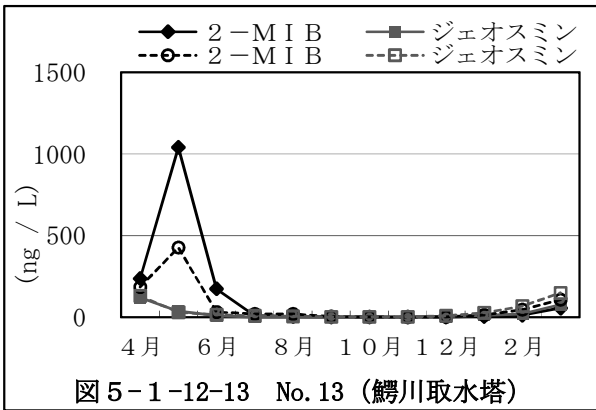
異臭味原因物質経月変化（北浦）



実線：R2年度、点線：過去3年間平均



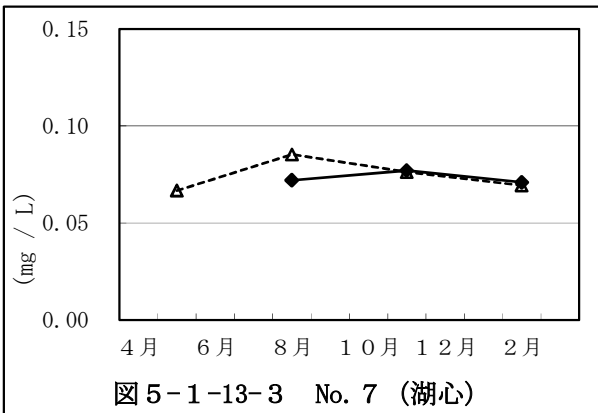
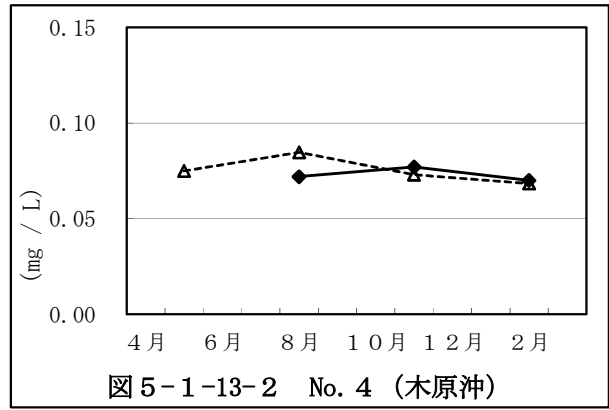
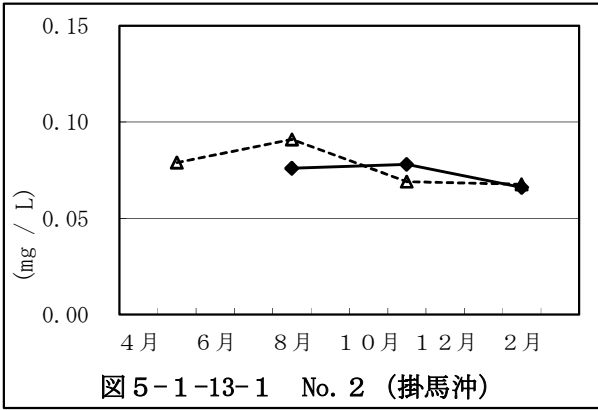
異臭味原因物質経月変化（鰐川、外浪逆浦）



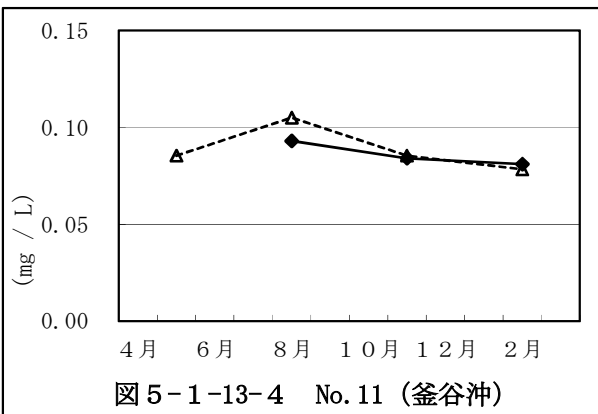
注) 定量下限値(1 ng/L)未満は、0 ng/Lで表示



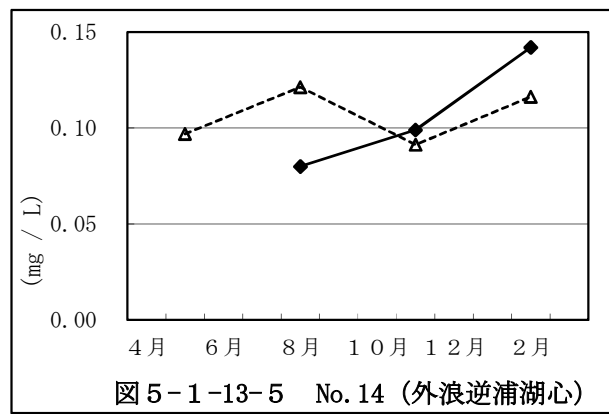
5.1.13 総トリハロメタン生成能 (THMFP) 経月変化 (西浦)



(北浦)



(外浪逆浦)

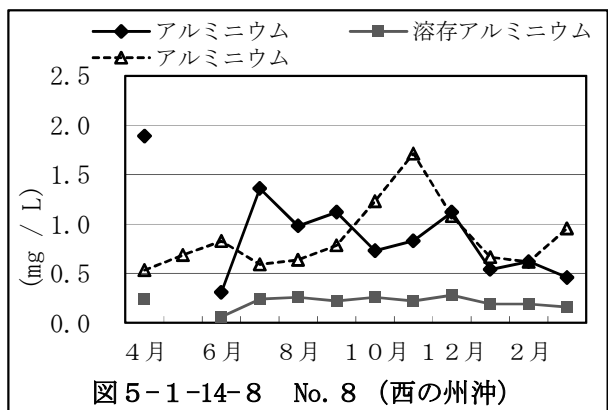
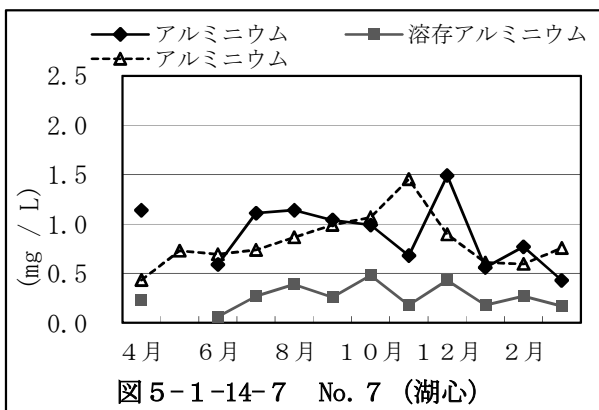
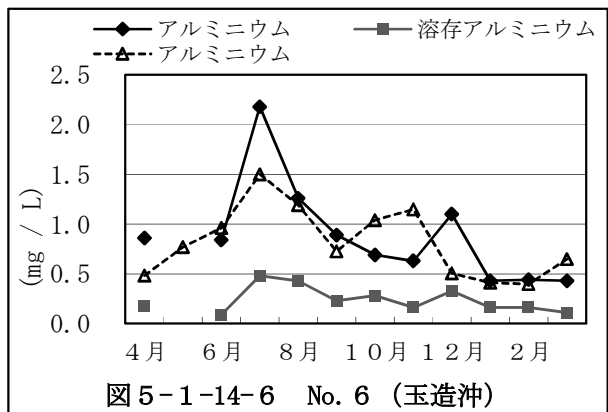
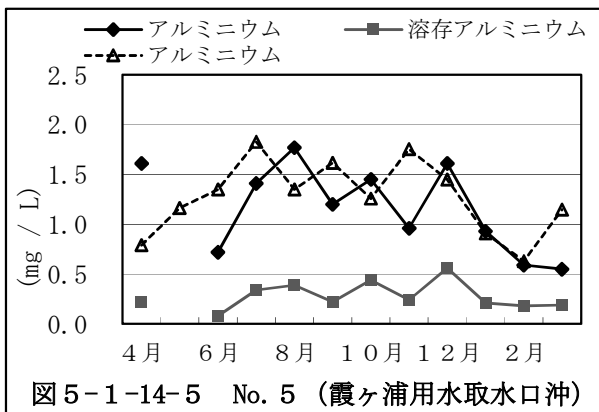
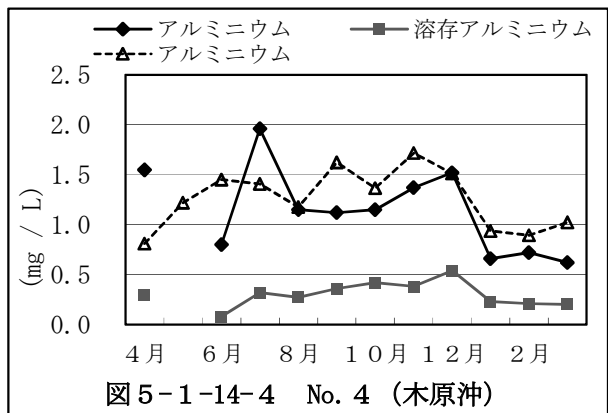
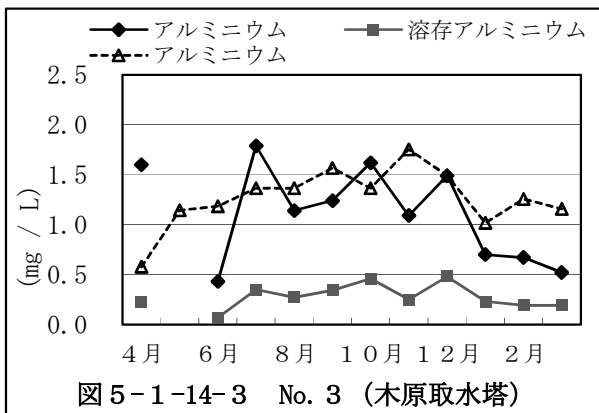
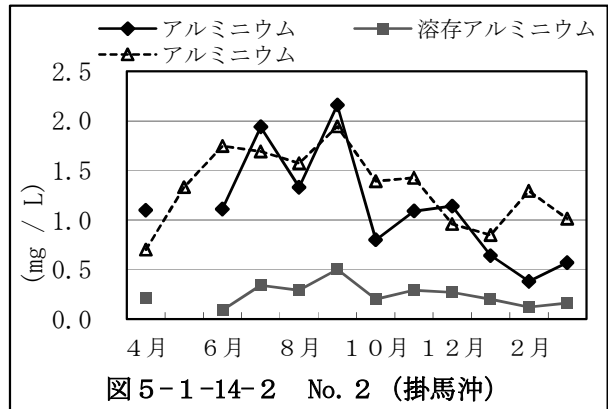
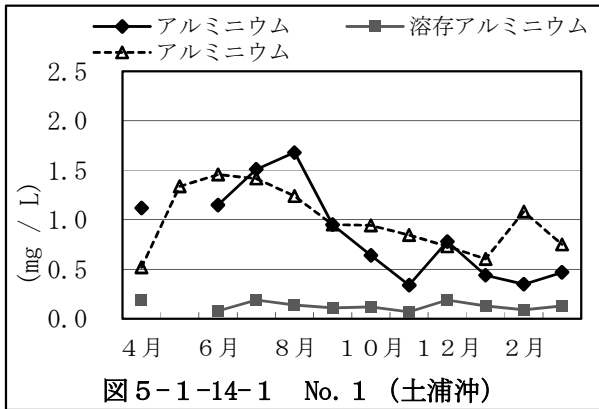


注) 5月は欠測

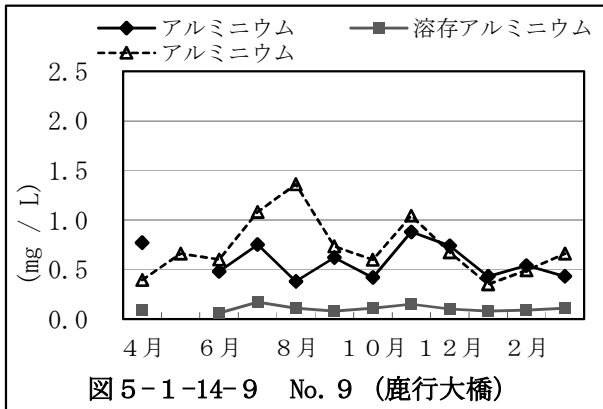


5.1.14 アルミニウム経月変化（西浦）

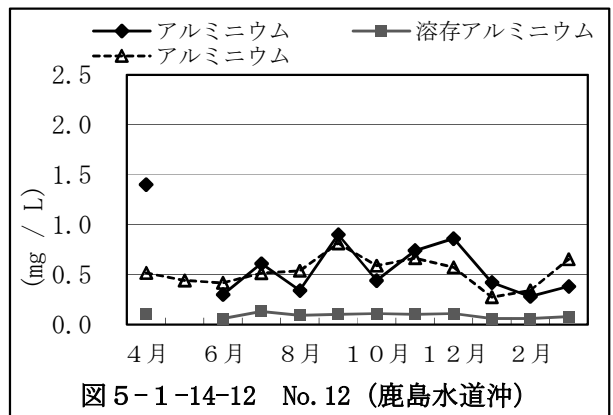
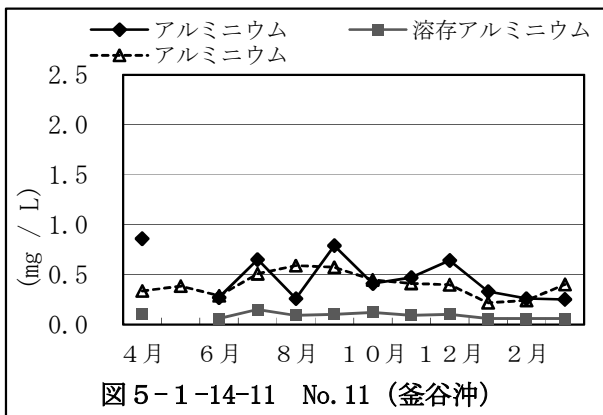
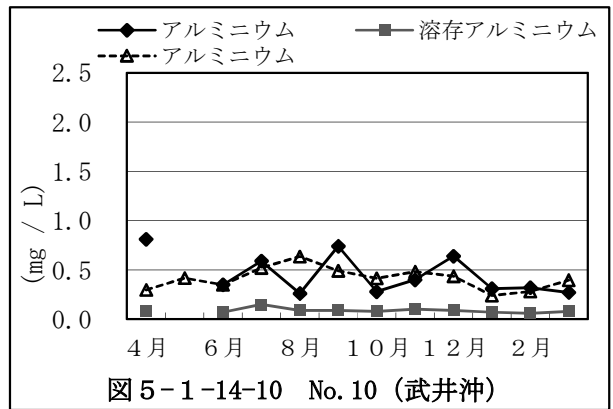
実線：R2年度、点線：過去3年間平均



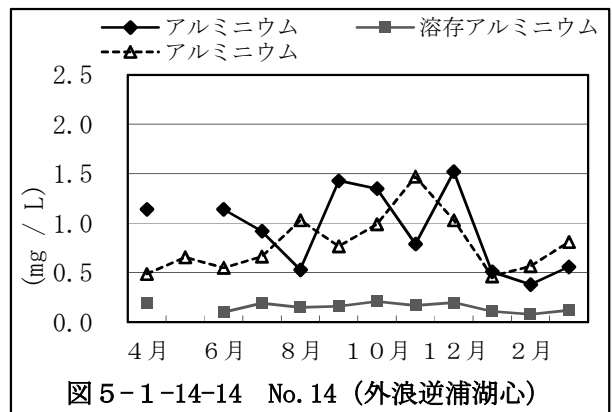
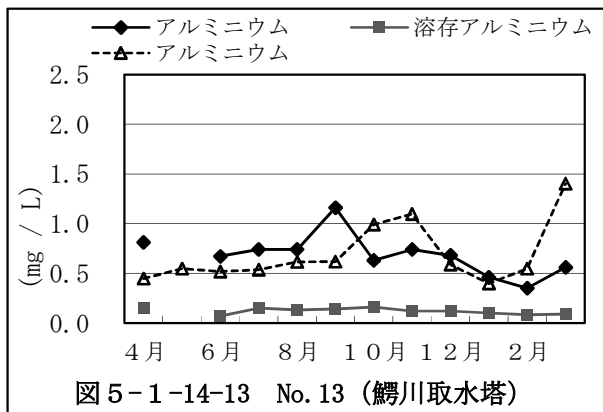
アルミニウム経月変化（北浦）



実線：R2年度、点線：過去3年間平均



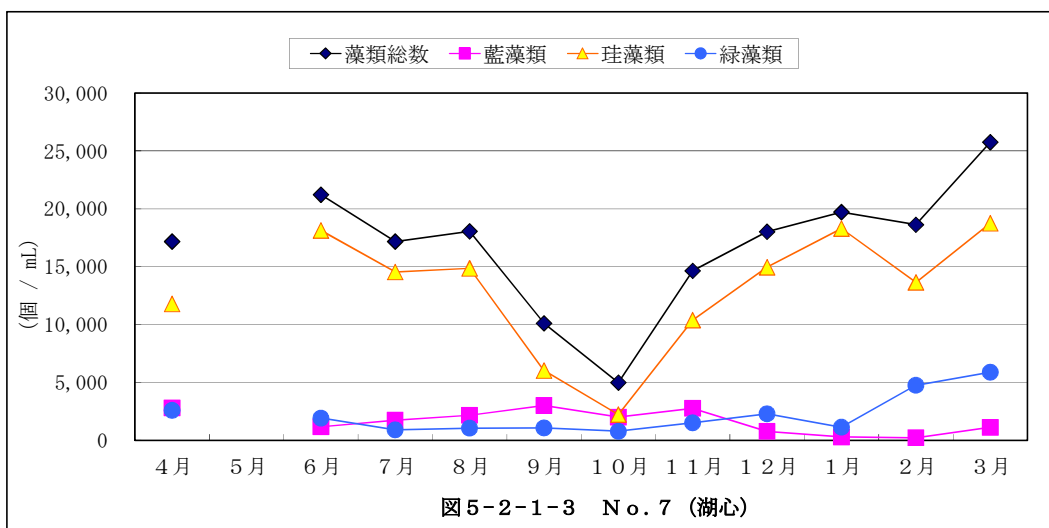
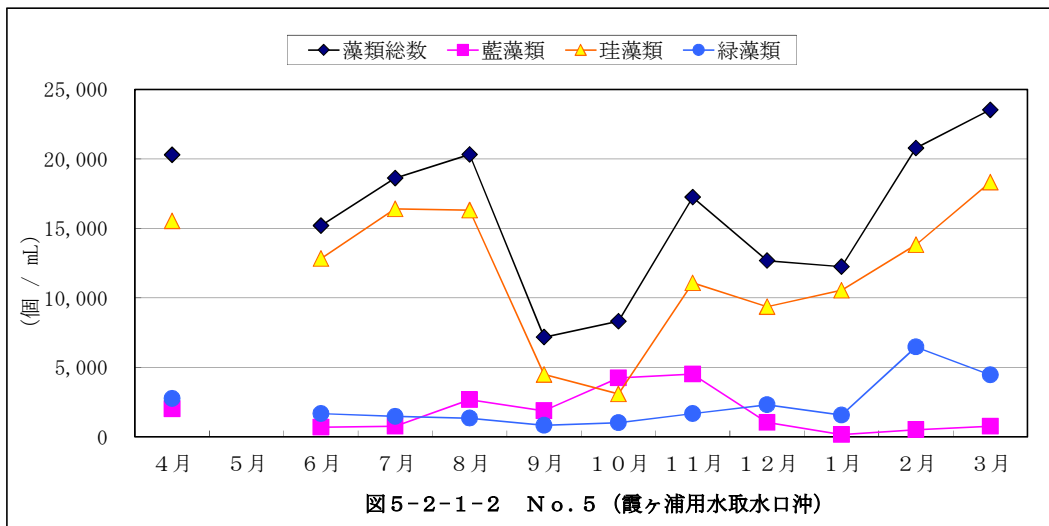
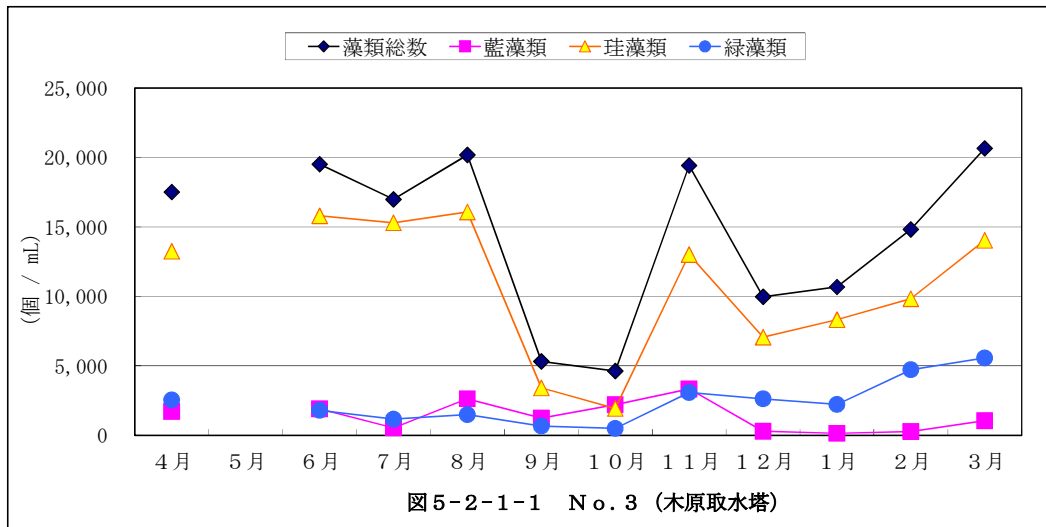
アルミニウム経月変化（鱈川、外浪逆浦）



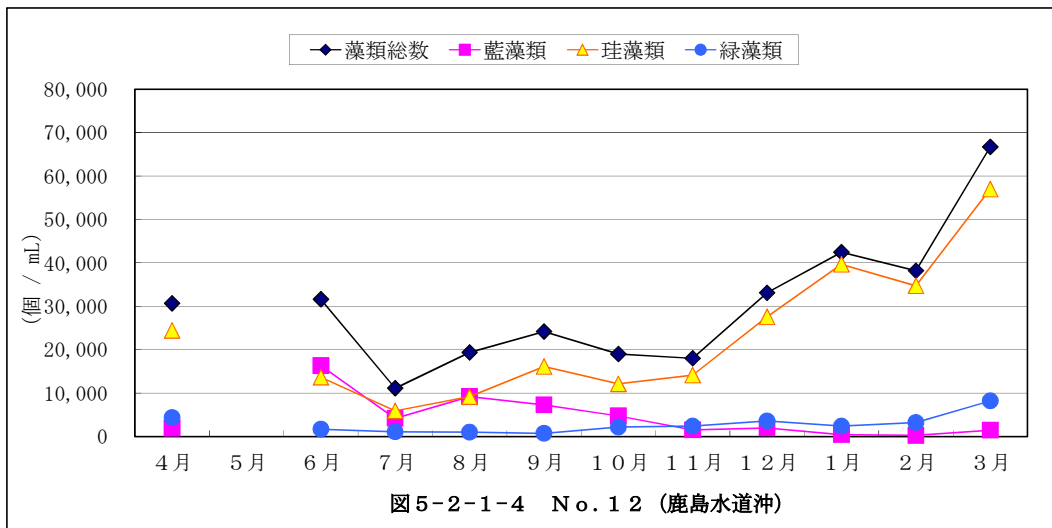
注) 5月は欠測

## 5. 2 地点別藻類経月変化

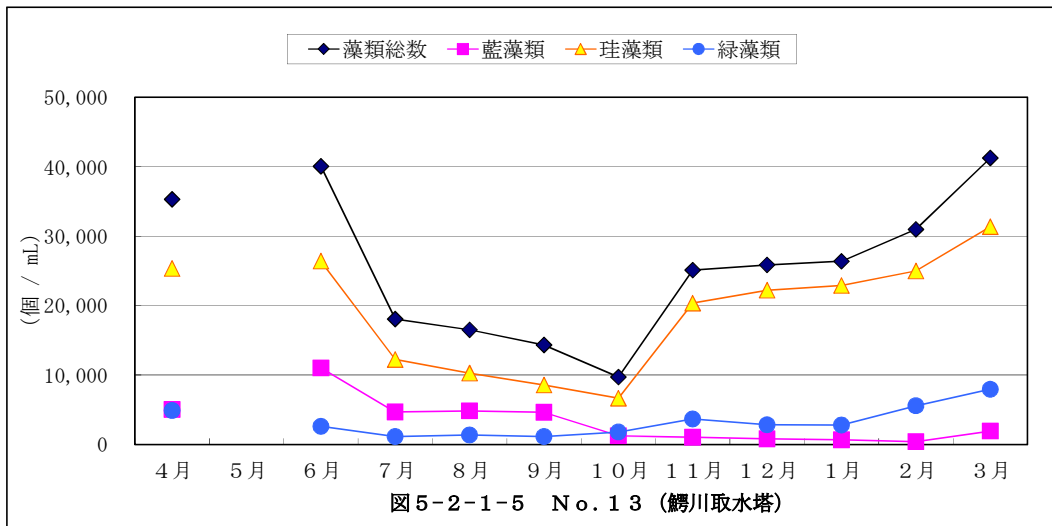
### 5. 2. 1 藻類数経月変化 (西浦)



藻類数経月変化（北浦）

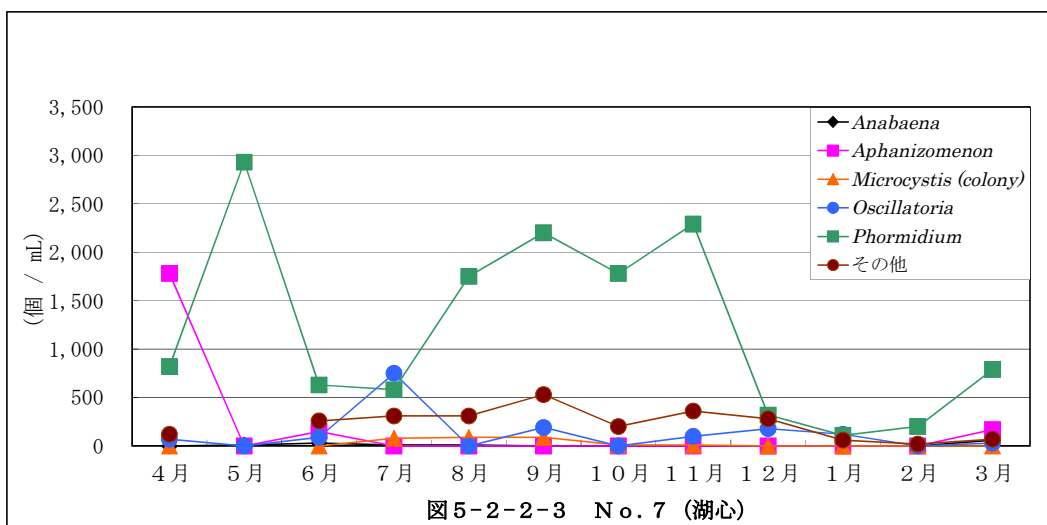
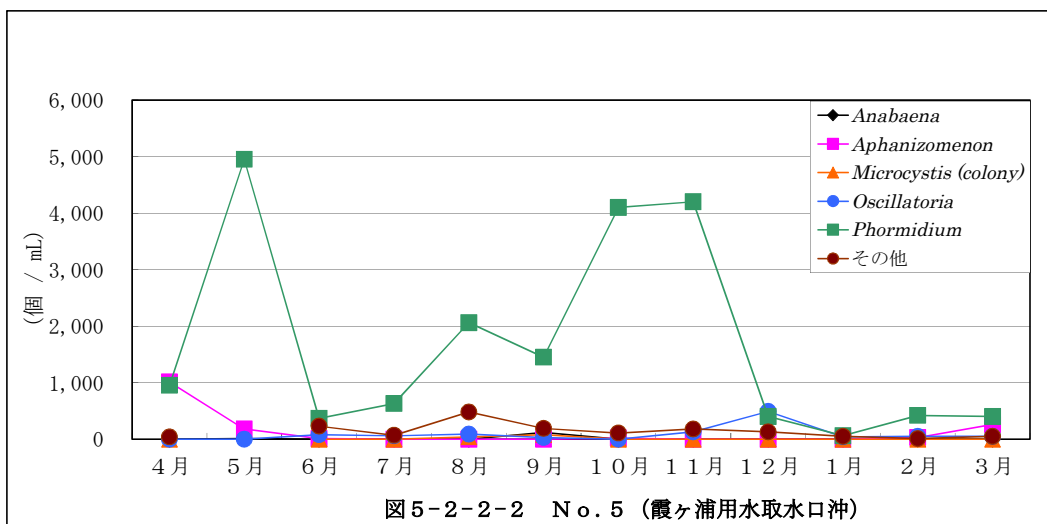
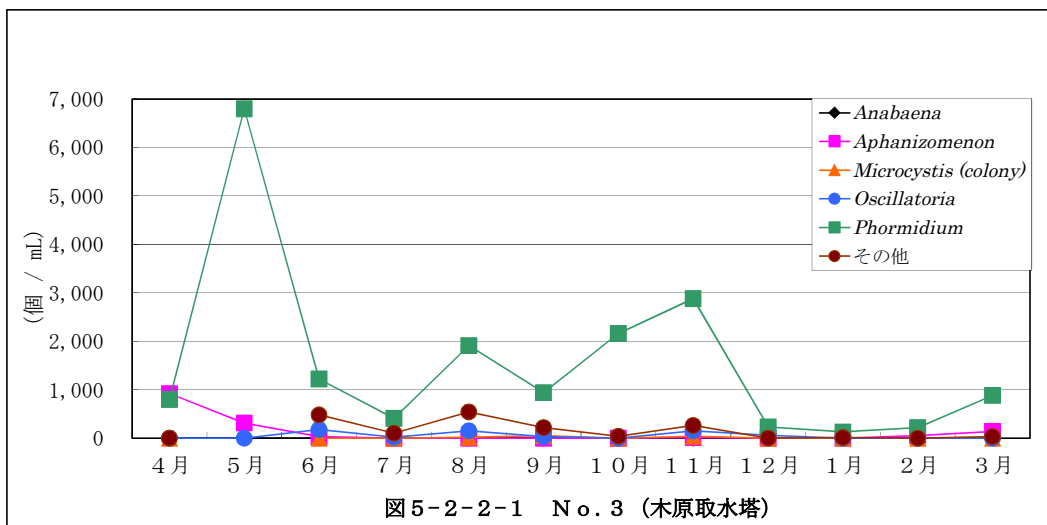


藻類数経月変化（鰯川）

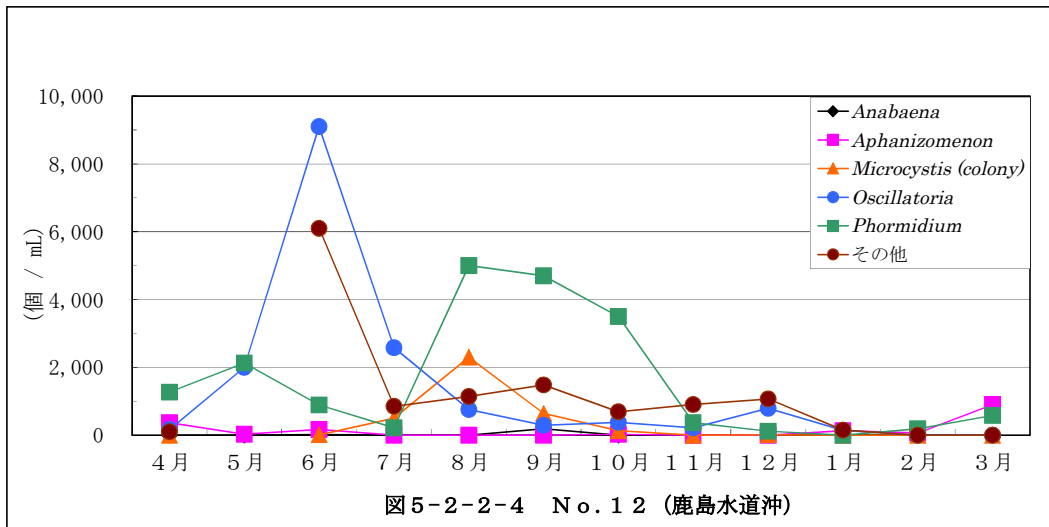


注) 令和2年5月は欠測

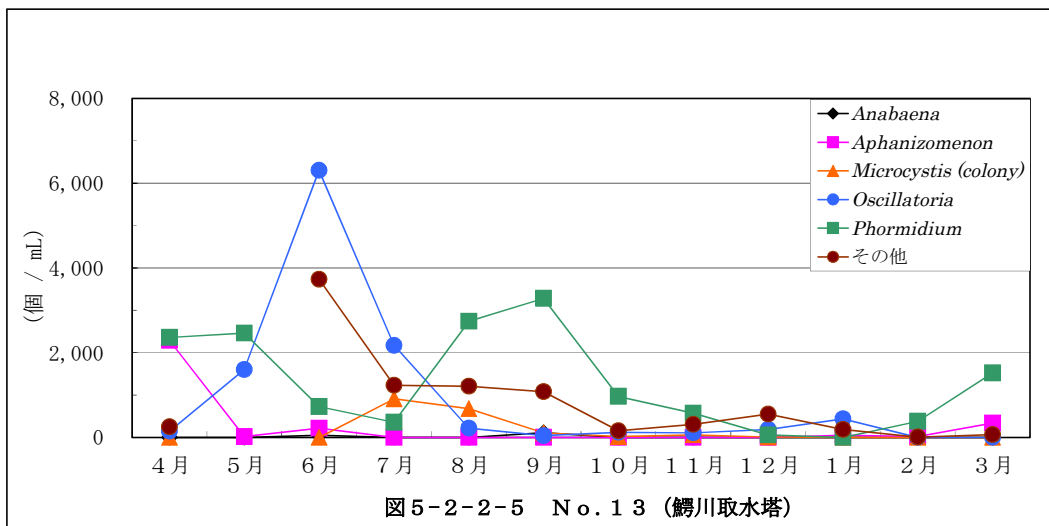
5. 2. 2 藍藻類経月変化 (西浦)



藍藻類経月変化（北浦）



藍藻類経月変化（鰐川）



注1) その他はAnabaena、Aphanizomenon、Microcystis(colony)、Oscillatoria、Phormidiumを除く全ての藍藻類を示す  
注2) 令和2年5月はAnabaena、Aphanizomenon、Oscillatoria、Phormidiumのみ計測



5. 2. 3 珪藻類経月変化 (西浦)

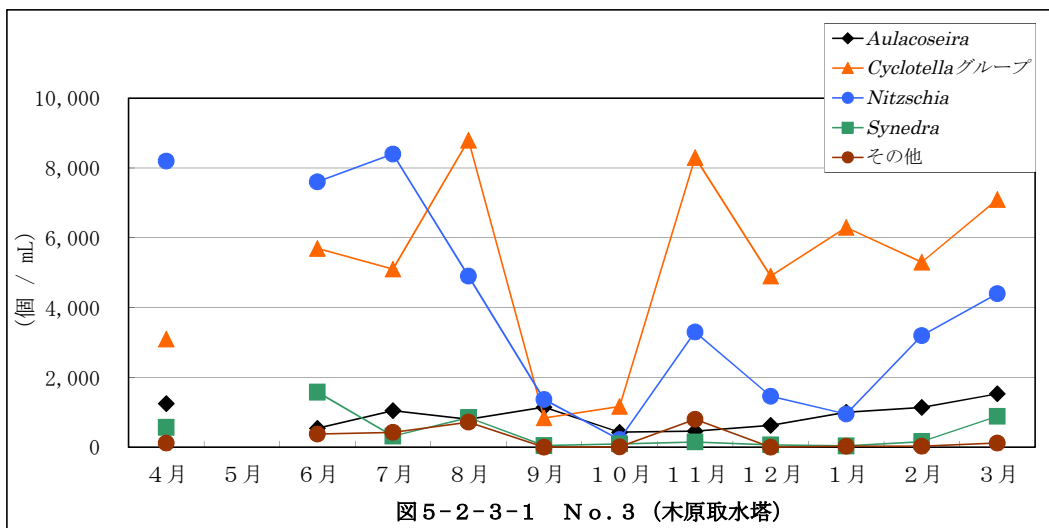


図5-2-3-1 No. 3 (木原取水塔)

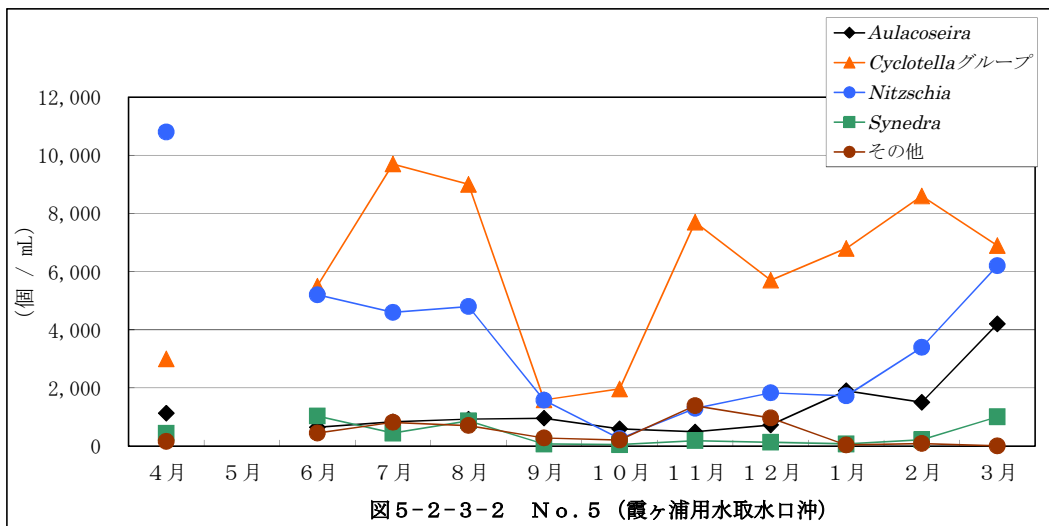


図5-2-3-2 No. 5 (霞ヶ浦用水取水口沖)

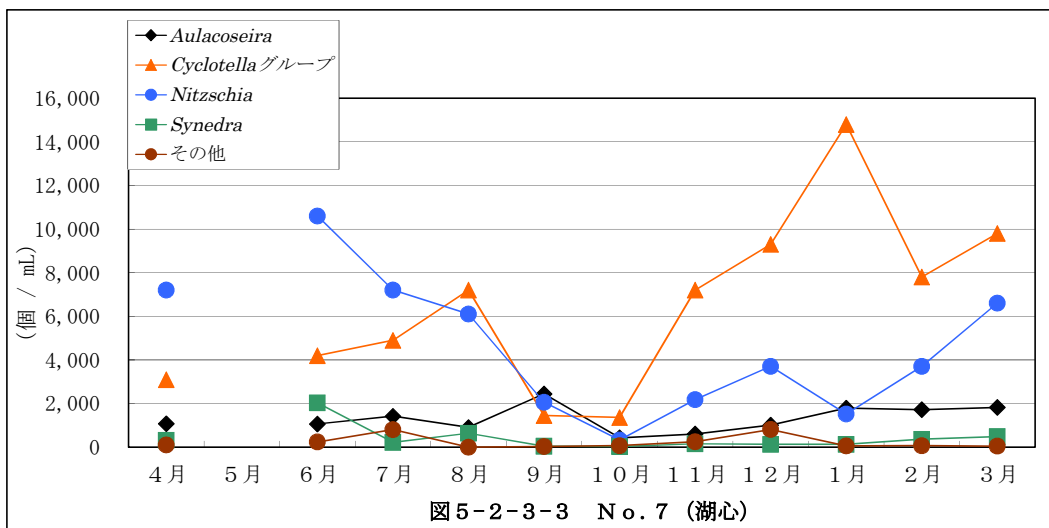
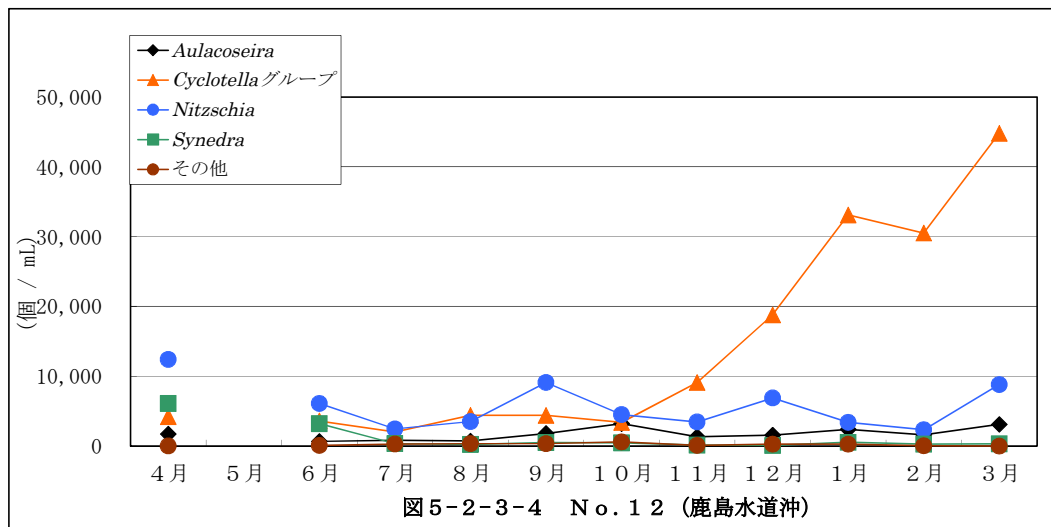
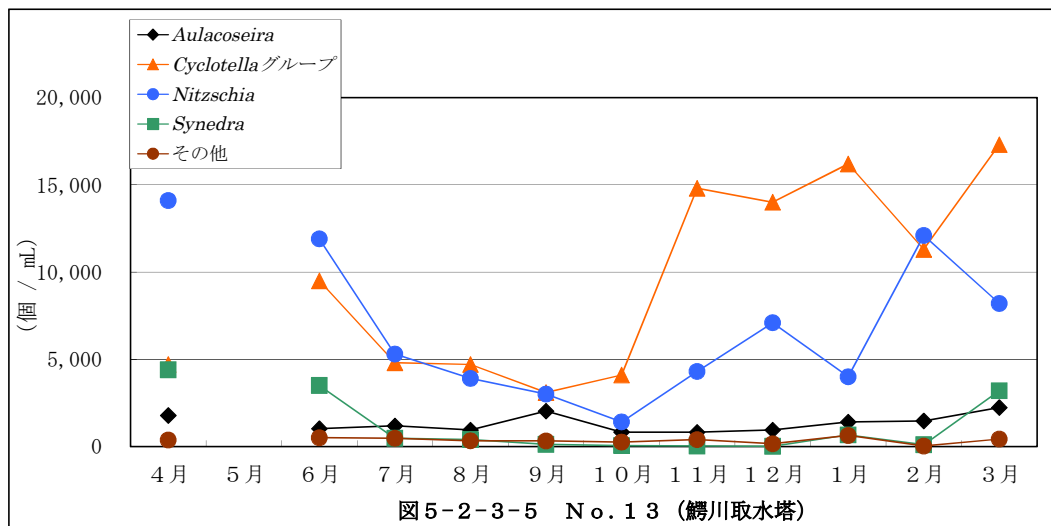


図5-2-3-3 No. 7 (湖心)

珪藻類経月変化（北浦）

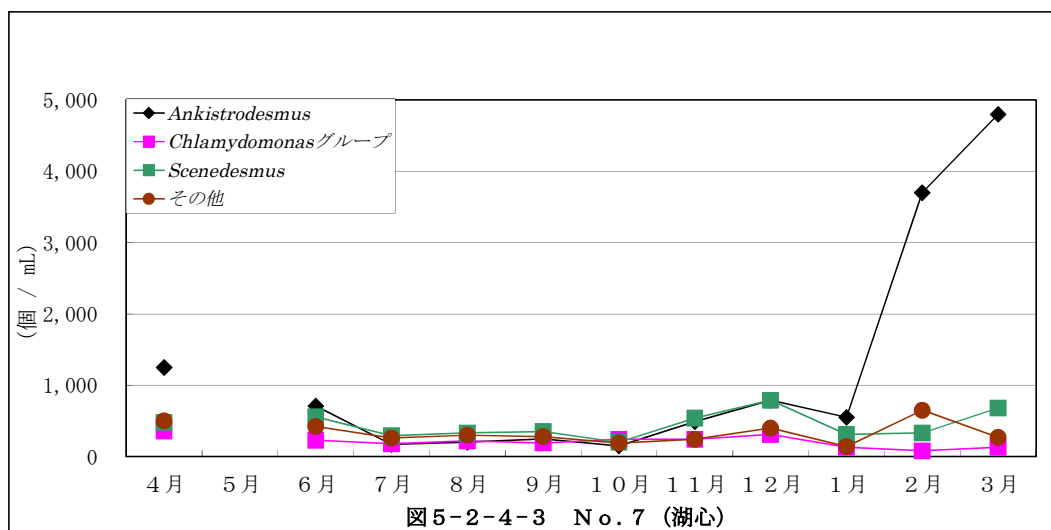
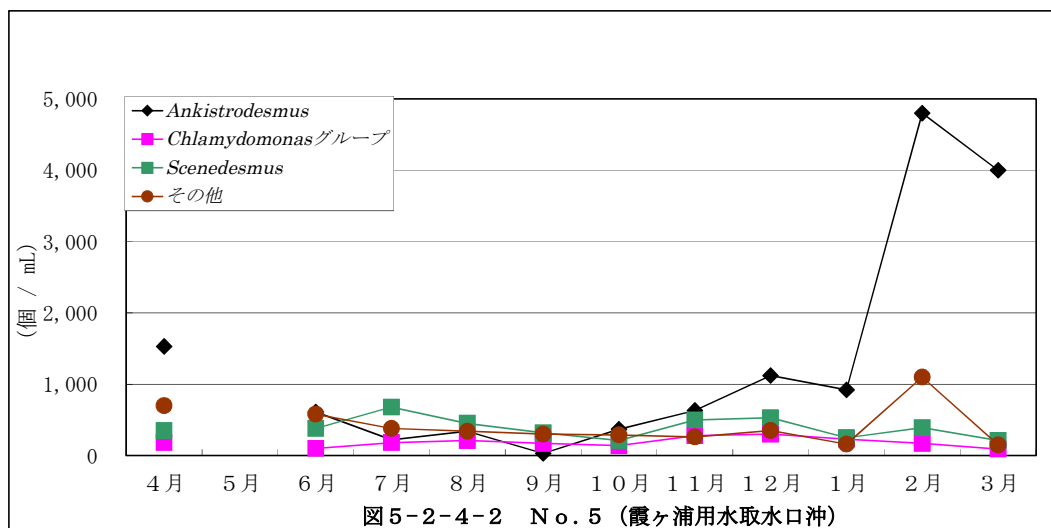
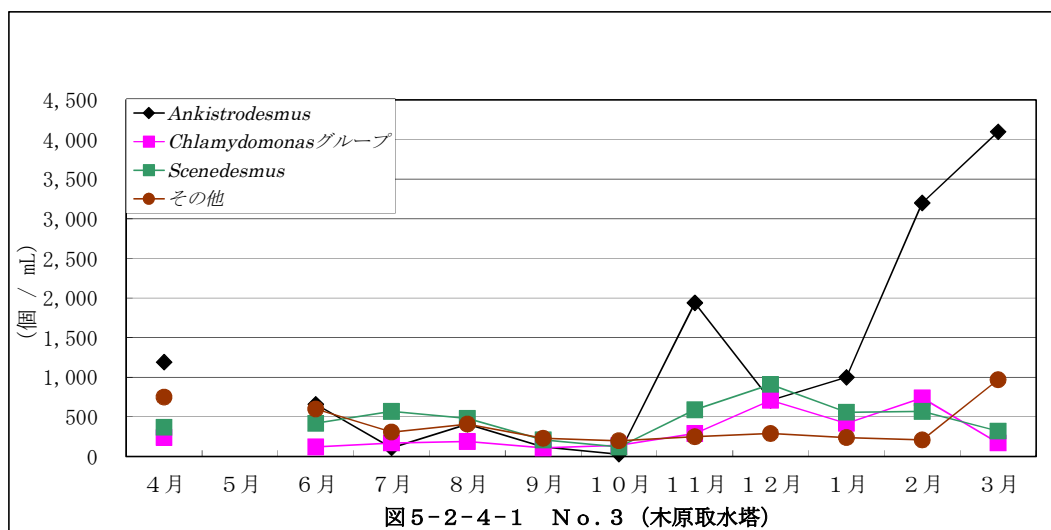


珪藻類経月変化（鰐川）

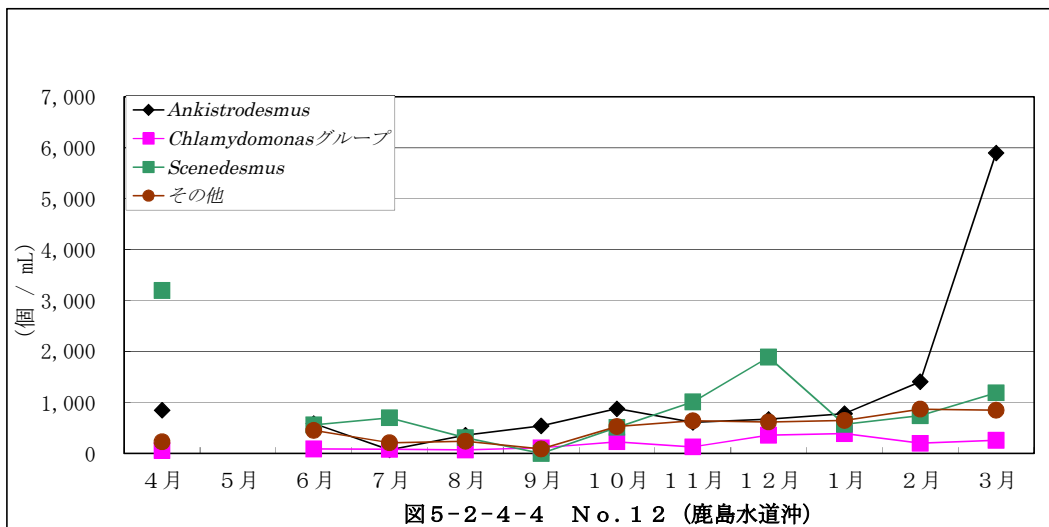


注1) その他はAulacoseira、Cyclotellaグループ、Nitzschia、Synedraを除く全ての珪藻類を示す  
注2) 令和2年5月は欠測

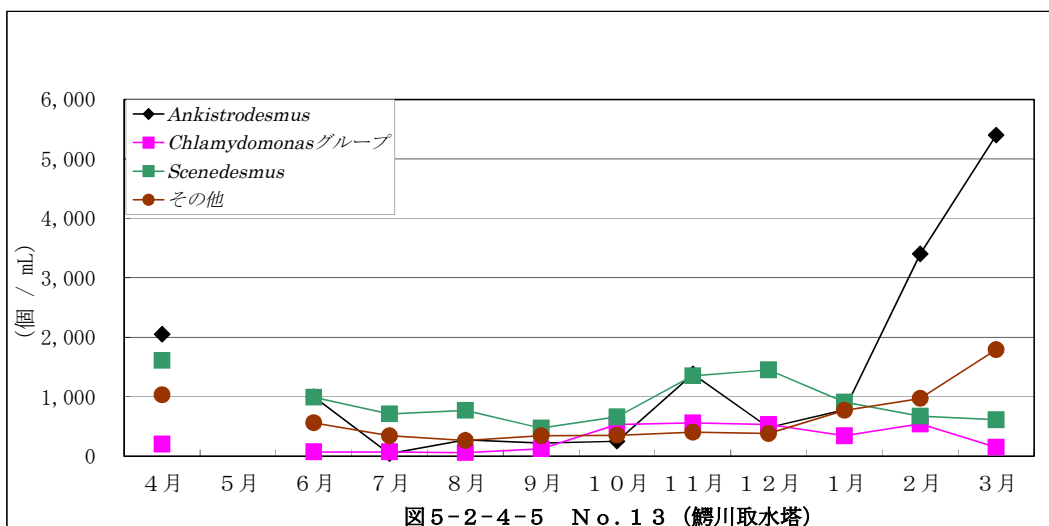
5. 2. 4 緑藻類経月変化 (西浦)



緑藻類経月変化（北浦）



緑藻類経月変化（鱒川）



注1) その他はAnkistrodesmus、Chlamydomonasグループ、Scenedesmusを除く全ての緑藻類を示す  
注2) 令和2年5月は欠測